

NEC

Versa M340/E2000

Disassembly Manual



NEC

Table of contents

Overview.....	3
Technician Notes.....	3
Disassembly Instructions.....	3
Reassembly Instructions	3
Required Tools	3
Hazardous Voltage.....	4
Avoid Electrostatic Discharge.....	4
Power Supply Unit.....	4
Removing the Battery	5
Removing the Memory Module	6
Removing the Hard Disk Drive	7
Removing the Keyboard.....	8
Removing the Optical Disk Drive.....	9
Removing the WLAN Card Module	11
Removing the MDC Modem	12
Removing the CPU.....	13
Removing the LCD Module	15
Removing the LCD Panel.....	17
Removing the Top Cover	19
Removing the Touch Pad.....	20
Removing the Main Board.....	21
Removing the Speaker Assembly	23
DIP Switch Settings.....	24
Screws	25
Notice	26

Overview

This document contains step-by-steps disassembly instructions for the Versa M340/E2000 chassis. The instructions are illustrated where necessary with images of the part that is being removed or disassembled. Furthermore, the screws that are removed are shown next to the image of the parts themselves.

NEC reserves the right to make changes to the Versa M340/E2000 chassis without notice.

Technician Notes

Only technicians authorized by NEC Computers International BV should attempt to repair this equipment. All troubleshooting and repair procedures are detailed to allow only subassembly/module level repair. Because of the complexity of the individual boards and subassemblies, no one should attempt to make repairs at the component level or to make modifications to any printed wiring board. Improper repairs can create a safety hazard. Any indication of component replacement or printed wiring board modifications may void any warranty or exchange allowances.

Disassembly Instructions

When disassembling the system unit, follow these general rules:

- Do not disassemble the system into parts that are smaller than those specified in the instructions.
- Label all removed connectors. Note where the connector goes and in what position it was installed.
- Turn off the power and disconnect all power and all options.

Reassembly Instructions

Reassembly is the reverse of the disassembly process. Use care to ensure that all cables and screws are returned to their proper positions. Check that no tools or any loose parts have been left inside the chassis. Check that everything are properly installed and tightened.

Required Tools

All disassembly procedures can be perform using the following tools:

- PH 0x60 Philips screwdriver
- PH 0x40 Philips screwdriver
- 4.0 x 60 Flat screwdriver
- 2.0 x 30 Flat screwdriver
- SW5.0 Spacer screwdriver
- Small tweezers
- Pin

Hazardous Voltage

There is hazardous voltage present inside the computer when it is connect to an AC supply, even when the computer's power switch is off. Exposure to hazardous voltage could cause personal injury. To avoid risk of injury, contact an Authorized Service Provider for proper (UN)installation of optional hardware devices.

Avoid Electrostatic Discharge

Electrostatic electricity can easily damage circuit cards and integrated circuits (ICs). To reduce risk of damage, store them in protective packaging whenever they are not installed in your system.

Add-in cards can be extremely sensitive to ESD and always require careful handling. After removing the card from the computer, place the card flat on a grounded, static-free surface, component-side up. Use a conductive foam pad if available, but not the card wrapper. Do not slide the card over any surface.

Before you install or remove memory modules, video memory, disk drives, circuit cards or other devices, protect them from static electricity. To do so, make sure your computer's power switch is OFF. Then, unplug the computer's AC power cord. Before picking up the device you (un)install, you should wear an anti-static wrist wrap (available at electronic supply stores). Be sure to connect the wrist wrap to an unpainted metal portion of the computer chassis. As an alternative, you can dissipate electrostatic build-up by touching an unpainted metal portion of the computer chassis with one hand. Then touch the device you are (un)installing with the other hand, and maintain continuous contact with it until it is (un)installed in the computer.

Power Supply Unit

Under no circumstances should you attempt to disassemble the power supply. The power supply contains no user-serviceable parts. Inside the power supply are hazardous voltages that can cause serious personal injury. Always return a defective power supply to your dealer.

WARNING

Ensure that the computer is disconnected from its power source and from all telecommunications links, networks, or modem lines whenever the chassis cover is removed. Do not operate the computer with the cover removed.

AVERTISSEMENT

Assurez-vous que le système est débranché de son alimentation ainsi que de toutes les liaisons de télécommunication, des réseaux, et des lignes de modem avant d'enlever le capot. Ne pas utiliser le système quand le capot est enlevé.

WARNUNG

Das System darf weder an eine Stromquelle angeschlossen sein noch eine Verbindung mit einer Telekommunikationseinrichtung, einem Netzwerk oder einer Modem-Leitung haben, wenn die Gehäuseabdeckung entfernt wird. Nehmen Sie das System nicht ohne die Abdeckung in Betrieb.

ADVERTENCIA

Asegúrese de que cada vez que se quite la cubierta del chasis, el sistema haya sido desconectado de la red de alimentación y de todos lo enlaces de telecomunicaciones, de red y de líneas de módem. No ponga en funcionamiento el sistema mientras la cubierta esté quitada.

WAARSCHUWING

Zorg er voor dat alle verbindingen van en naar de computer (stroom, modem netwerk, etc) verbroken worden voordat de behuizing geopend wordt. Zet de computer nooit aan als de behuizing geopend is.

AVVERTENZA

Prima di rimuovere il coperchio del telaio, assicurarsi che il sistema sia scollegato dall'alimentazione, da tutti i collegamenti di comunicazione, reti o linee di modem. Non avviare il sistema senza aver prima messo a posto il coperchio

Removing the Battery

Perform the following steps to remove the battery:

1. Make sure to power off the Versa M340/E2000.
2. Turn the unit upside down.
3. Unlock the battery and slide it out of its place as the arrow shows in Fig. 1

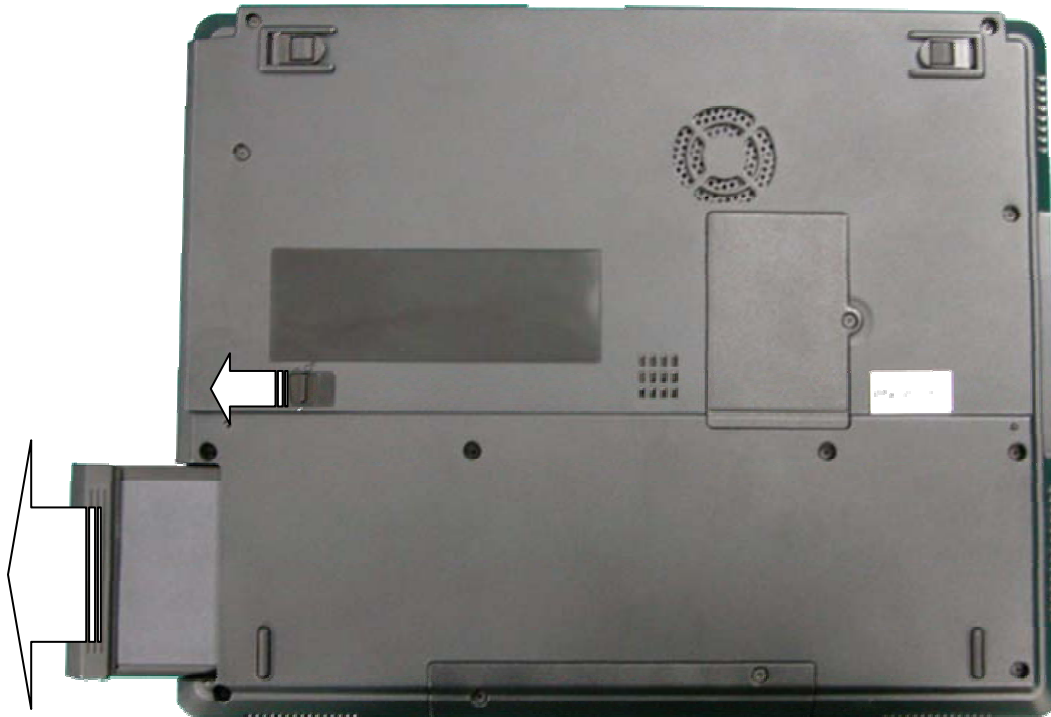


Fig. 1 Removing the battery

Removing the Memory Module

To remove the Memory Module, first remove the battery (see [Removing the Battery](#)), then perform the following steps:

1. Release the one screw retaining the memory module cover.



Fig. 2 Removing the screw retaining the memory module slot cover

2. Unclip the memory module as shown in Fig. 3



Fig. 3 Removing the memory module

3. Remove the memory module from its slot and put it aside.



Removing the Hard Disk Drive

To remove the hard disk drive, first remove the battery (see [Removing the Battery](#)), then perform the following steps:

1. Remove the screws as shown in Fig. 4



Fig. 4 Removing the Hard disk drive cover



M2.5x5 Black

2. Release the screws that secure HDD module as shown in Fig. 5 and carefully pull the HDD module out from the base unit.



Fig. 5 Screw retaining the HDD module



M3x5 Black

Removing the Keyboard

To remove the Keyboard, first remove the battery (see [Removing the Battery](#)), then perform the following steps:

1. Release the keyboard cover from the rear of the system by pulling it from the gaps on LCD hinge as shown in Fig. 6

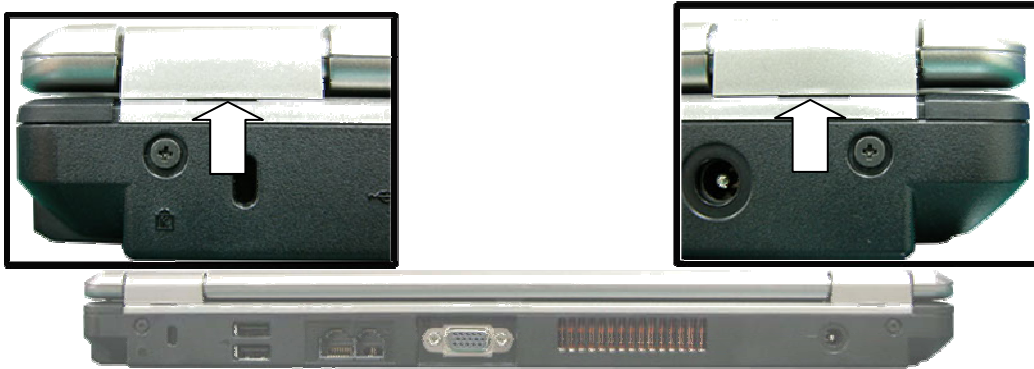


Fig. 6 Releasing the keyboard cover

2. Lift up the keyboard cover carefully as shown in Fig. 7



Fig. 7 Lifting up the Keyboard Cover

3. Lift up the keyboard and disconnect it from the system as shown in Fig. 8

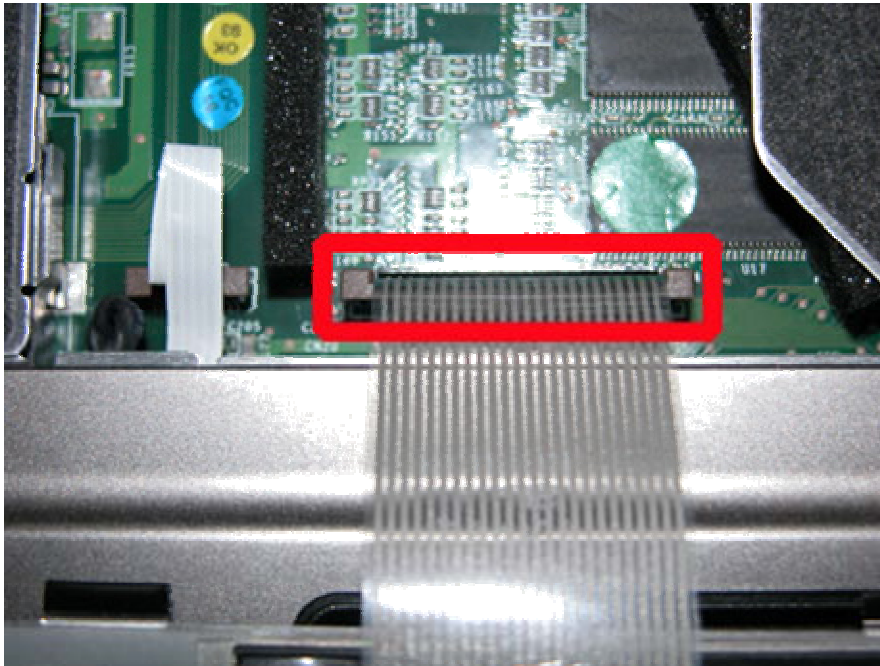


Fig. 8 Disconnecting the keyboard flat cable

Removing the Optical Disk Drive

To remove the ODD, first remove the battery (see [Removing the Battery](#)) and remove the Keyboard (see [Removing the Keyboard](#)) then perform the following steps:

1. Remove the screws retaining the optical drive as shown in Fig. 9

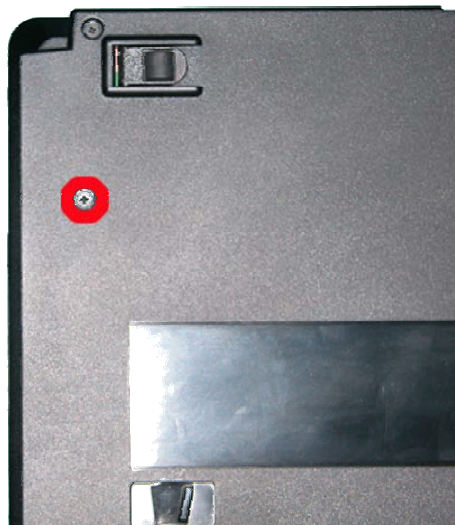


Fig. 9 Releasing the optical drive



M2.5x5 Black

2. Flip over the unit, release screw retaining ODD module and then push it out from the base unit as shown in Fig. 10

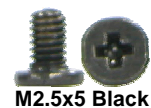
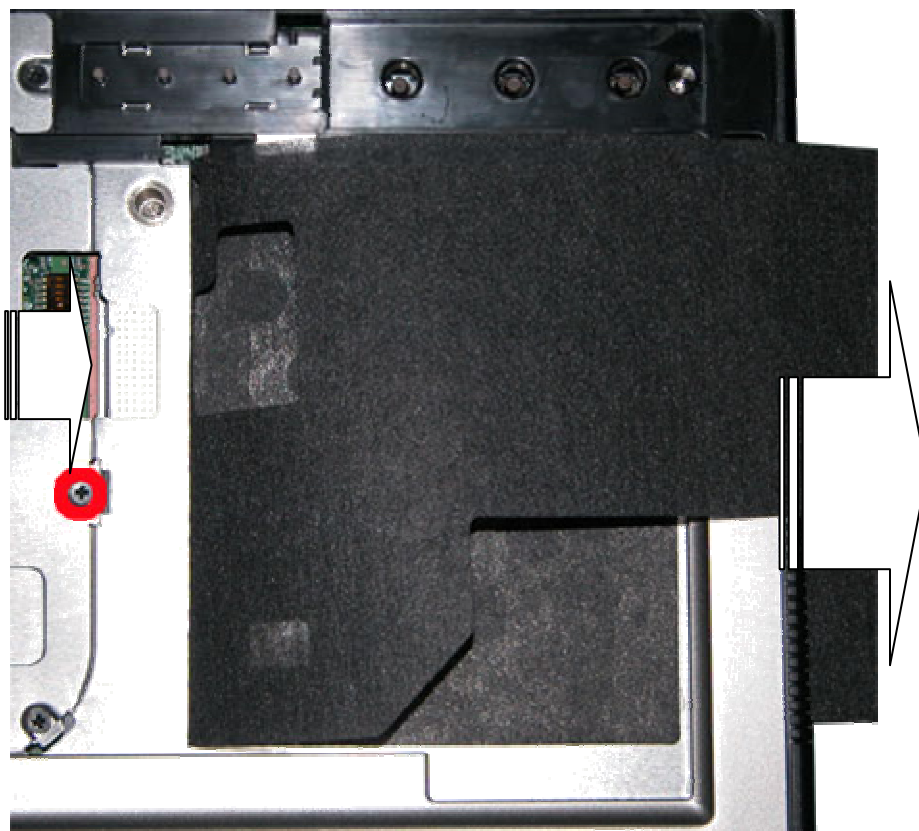


Fig. 10 Pushing the optical drive out from the base unit

Removing the WLAN Card Module

To remove the WLAN Card Module first remove the battery (see [Removing the Battery](#)) and remove the Keyboard (see [Removing the Keyboard](#)) then perform the following steps:

3. Release all screws on heat plate as shown in Fig. 11

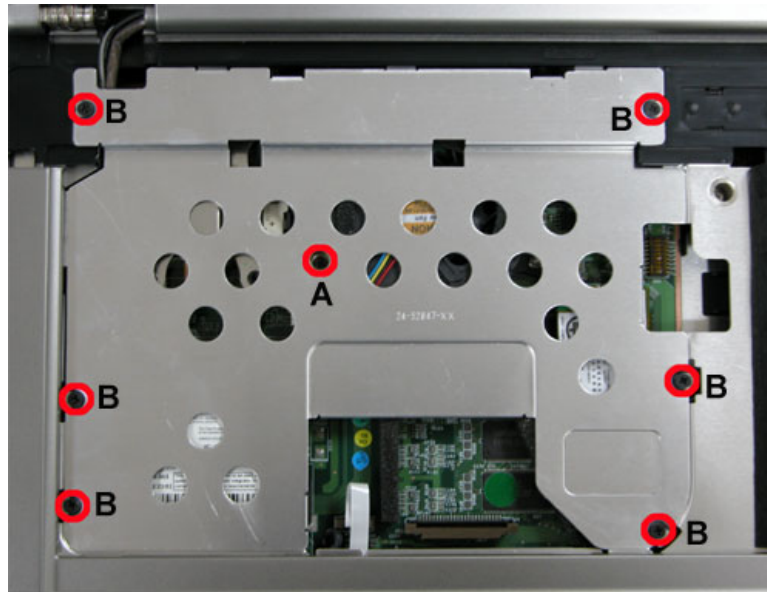


Fig. 11 Heat Plate



4. Remove the wireless antenna connector and release the WLAN Card Module as shown in Fig. 12



Fig. 12 Wireless Card Module

Removing the MDC Modem

To remove the MDC Modem, first remove the battery (see [Removing the Battery](#)) and remove the Keyboard (see [Removing the Keyboard](#)) then perform the following steps:

1. Release all screws on heat plate as shown in Fig. 13

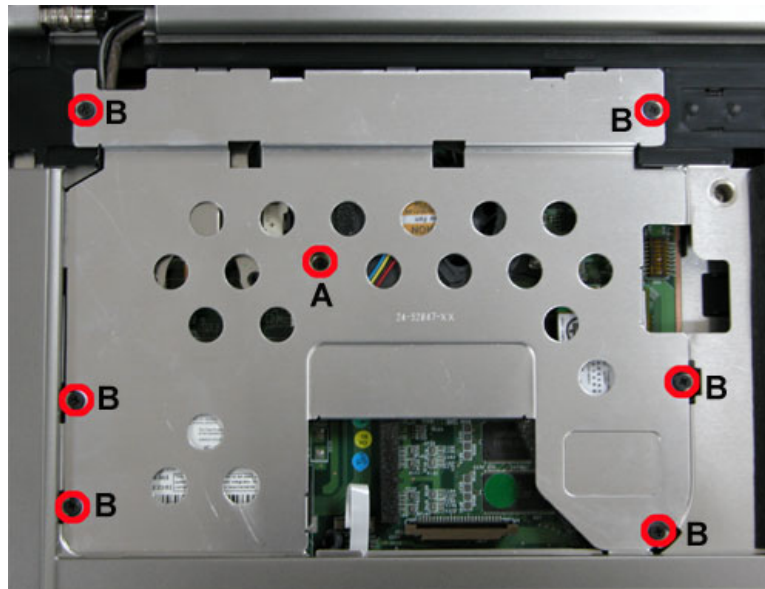


Fig. 13 Heat Plate



2. Release screws and disconnect cable on MCD Modem as shown in Fig. 14



Fig. 14 MDC Modem



3. Lift up the MDC modem and put it aside.

Removing the CPU

To remove the CPU first remove the battery (see [Removing the Battery](#)) and remove the Keyboard (see [Removing the Keyboard](#)) then perform the following steps:

1. Remove the screws retaining the Heat Plate as shown in Fig. 15

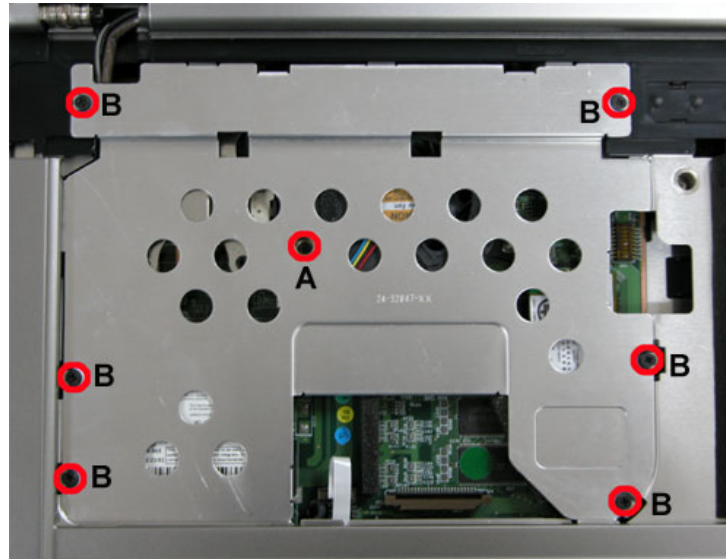


Fig. 15 Removing the screws retaining Heat Plate



A = M2.5x5 Silver



B = M2.5x5 Black

2. Remove the CPU Fan screws, disconnect the CPU Fan connector and remove the CPU Fan.

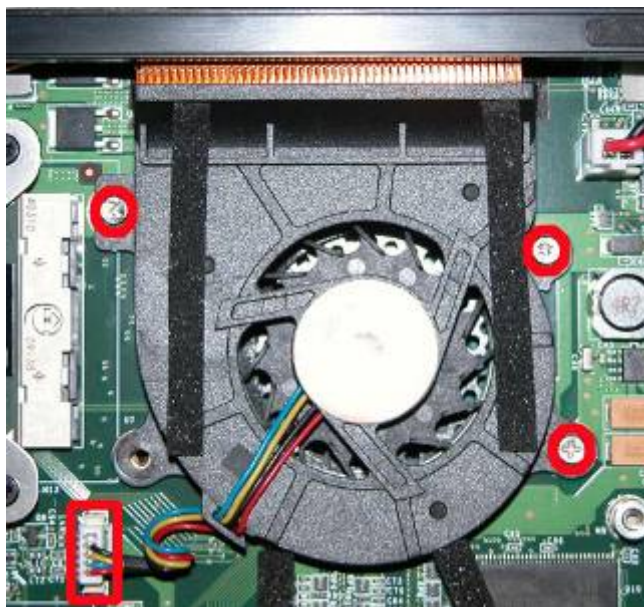


Fig. 16 CPU Fan



M2.5x5 Silver

3. Unscrew screws on CPU Heat Sink in descending order (4→3→2→1) as shown in Fig. 17



Fig. 17 CPU Heat Sink



Note: Beware of screws use on the CPU heat sink! Make sure to use the screw size M2.5x4, otherwise it might cause damage to the CPU die. When install heat sink, screws must be secured in ascending order (1→2→3→4).

4. Unlock the CPU from the CPU socket and lift up the CPU carefully.



Fig. 18 Unlocking the CPU

Removing the LCD Module

To remove the LCD Module first remove the battery (see [Removing the Battery](#)) and remove the Keyboard (see [Removing the Keyboard](#)) then perform the following steps:

1. Remove the screws retaining the Heat Plate as shown in Fig. 19

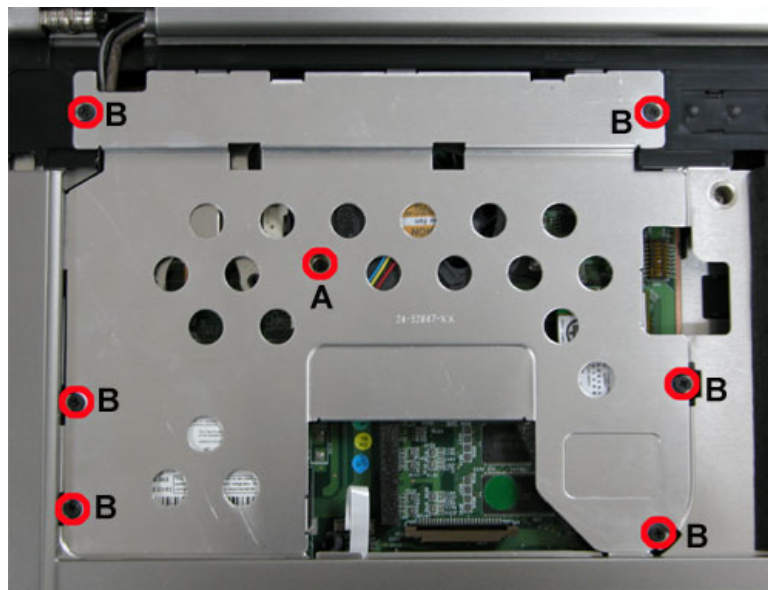
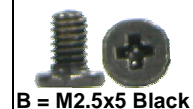


Fig. 19 Removing the screws retaining the Heat Plate



A = M2.5x5 Silver



B = M2.5x5 Black

2. Flip over the base unit and release the screws retaining the LCD Module.



Fig. 20 Removing the screws retaining the LCD Module



M2.5x8 Black

3. Release the screws on the system rear side as shown in Fig. 21



Fig. 21 Removing the screws retaining the LCD Module



M2.5x8 Black

4. Open up the LCD lid, release the two LCD cable connector on Main Board.



Fig. 22 LCD Cable Connector

5. Carefully lift up the LCD Module.

Removing the LCD Panel

To remove the LCD panel, first remove the LCD module (see [Removing the LCD Module](#)), then perform the following steps:

1. Use a pin to remove the rubber cover on the LCD module as shown in Fig. 23
2. Remove all screws as shown in Fig. 23 and remove carefully the LCD cover.



Fig. 23 Removing the rubber covers & screws on the LCD Module

3. Release the inverter board by remove the screw and disconnect all connectors as shown in Fig. 24



Fig. 24 Removing the Inverter Board

4. Release screw on LCD cable before lift up the LCD panel.



Fig. 25 Removing the screw on LCD cable



M2x3 Silver

5. Remove the screws at both sides of the LCD panel in order to release the LCD hinges as shown in Fig. 26



Fig. 26 Removing the LCD Panel hinges



M2x3 Silver

6. Carefully separate LCD panel from LCD cable and LCD hinges and place it safe place.

Removing the Top Cover

To remove the Top Cover , first remove the battery (see [Removing the Battery](#)), remove the HDD (see [Removing the Hard Disk Drive](#)), remove the Optical Disk Drive (see [Removing the Optical Disk Drive](#)), remove the Keyboard (see [Removing the Keyboard](#)) and remove the LCD Module (see [Removing the LCD Module](#)) then perform the following steps:

1. Remove all screws on the bottom of the base unit as shown in Fig. 27

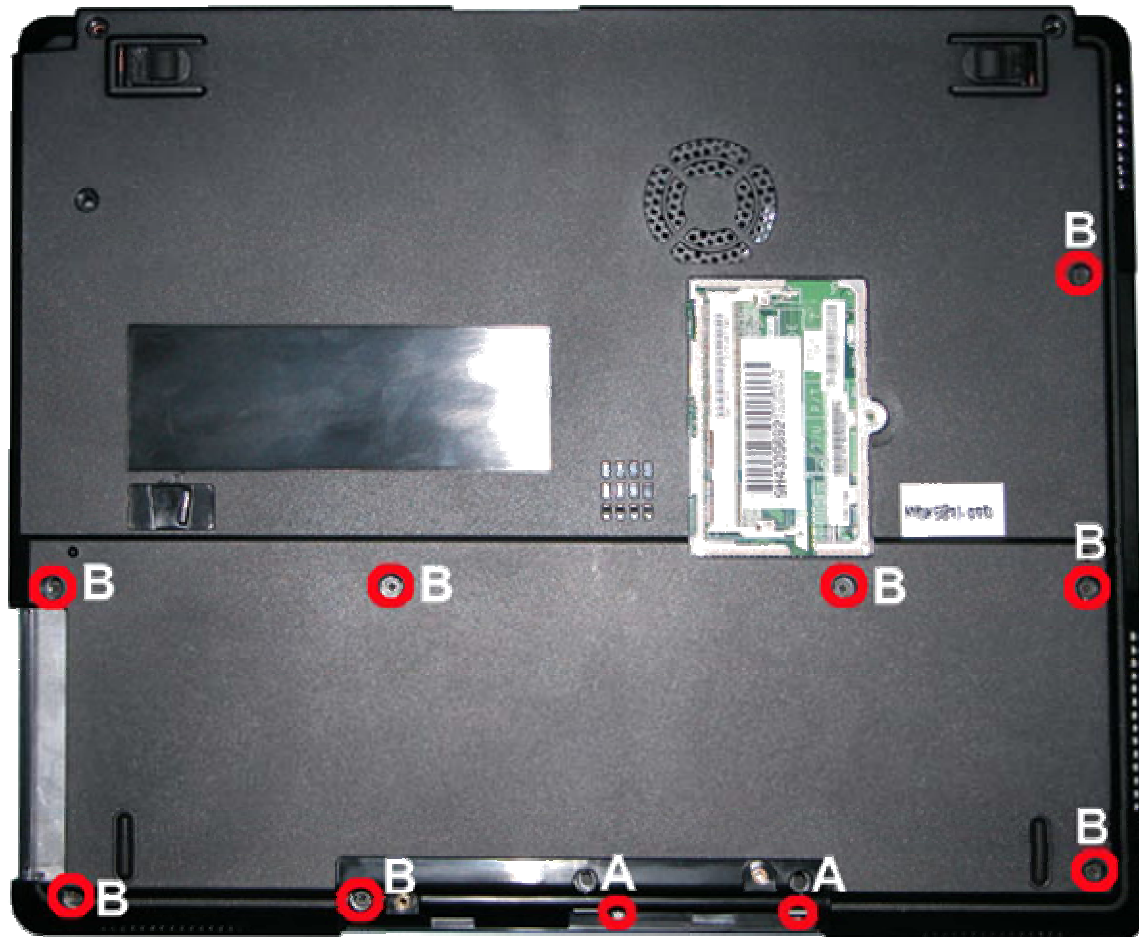


Fig. 27 Bottom Cover

2. Release all screws on the top cover and touchpad connector as shown in Fig. 28

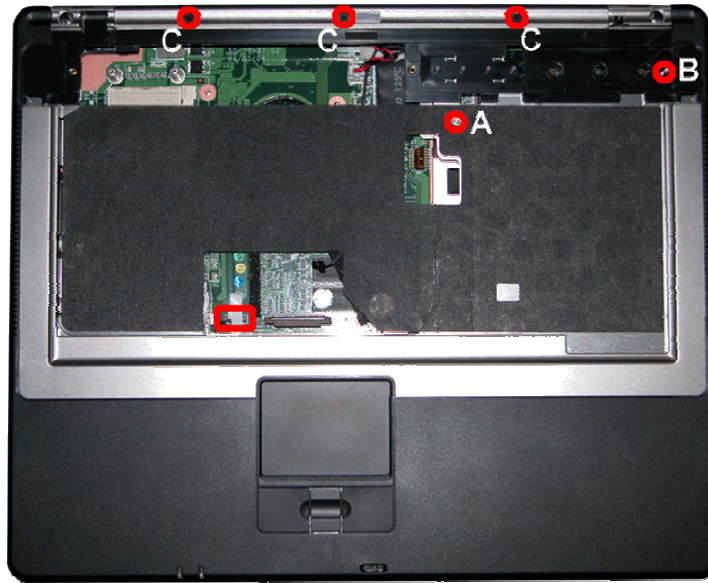


Fig. 28 Top Cover screws



3. Carefully lift up the Top Cover.

Removing the Touch Pad

To remove the touch pad, first remove the top cover (see [Removing the Top Cover](#)), then perform the following steps:

1. Unscrew the screws on the Top Cover as shown in Fig. 29

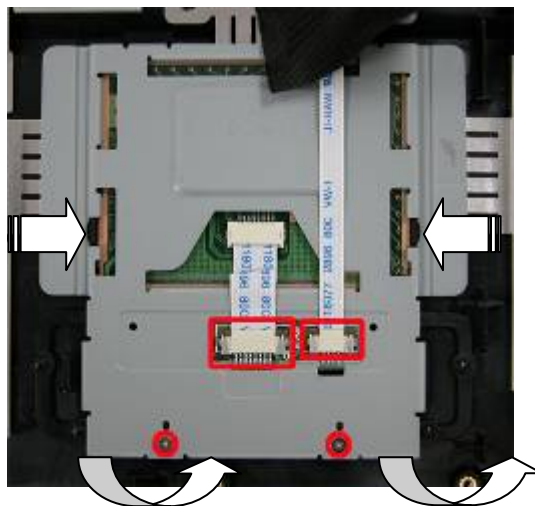


Fig. 29 Touch Pad



2. Carefully separate the Touch Pad module from Top cover.

Removing the Main Board

To remove the Main Board, first remove the Top Cover (see [Removing Top Cover](#)) then perform the following steps:

1. Remove the Hex screws from the VGA Port as shown in Fig. 30



Fig. 30 VGA Port



M2.5x10 Silver

2. Unscrew those screws on HDD holder as shown in Fig. 31 and separate it carefully from Main Board.

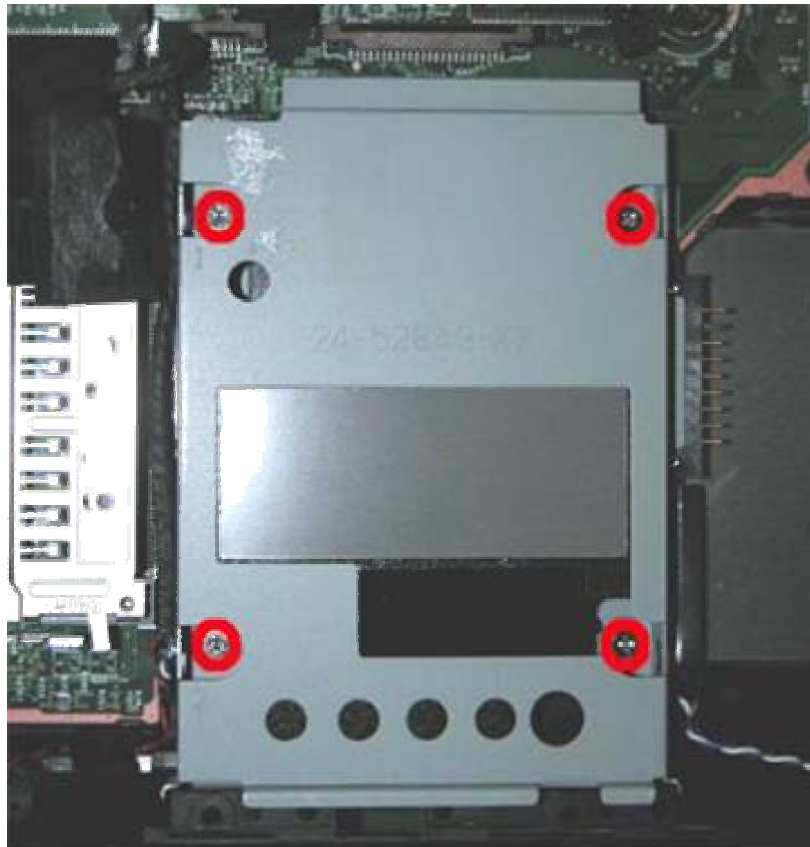


Fig. 31 HDD Holder



M2.5x7 Silver

3. Disconnect Speaker and AC socket connectors from the Main board as shown in Fig. 32

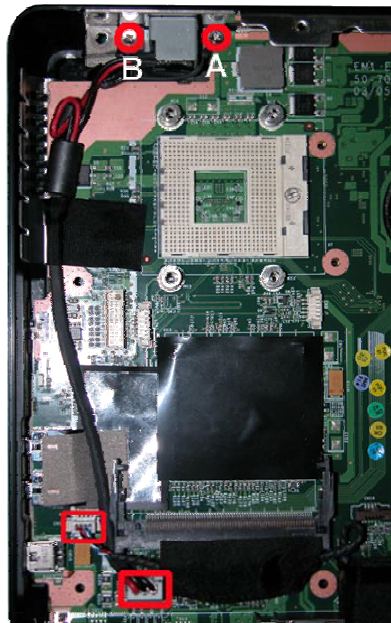


Fig. 32 Connectors on Main Board



4. Unscrew the screws on Main Board encircled in Fig. 33 and disconnect Dip switch connector

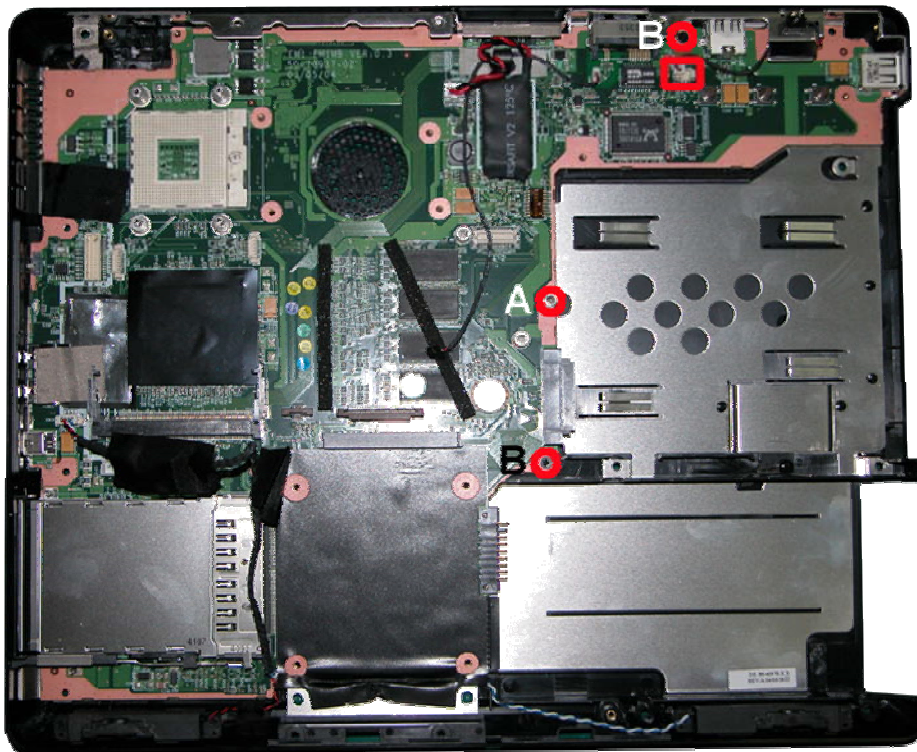


Fig. 33 Screws on Main Board



5. Carefully lift up the Main Board as shown in Fig. 34 and place it in safe place.

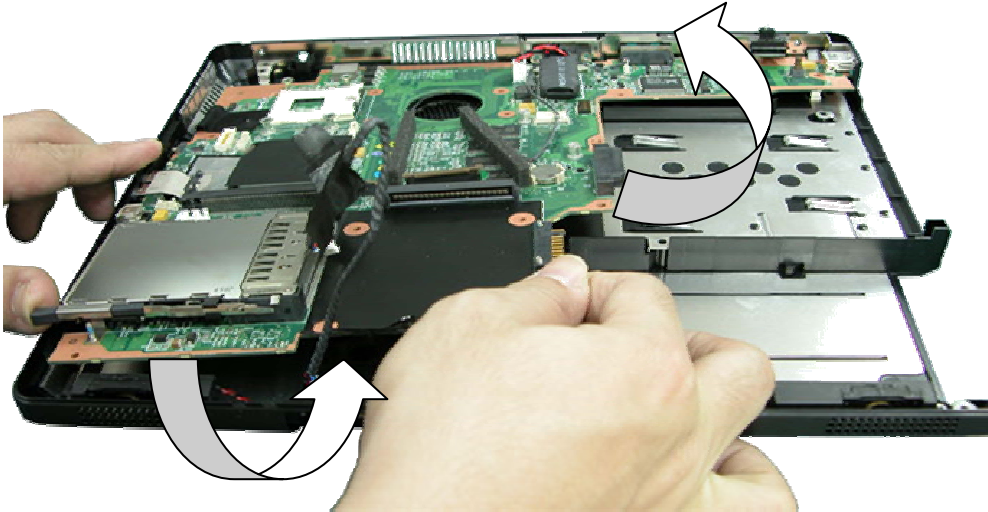


Fig. 34 Lifting up the Main Board

Removing the Speaker Assembly

To remove the Speaker Assembly, first remove the Main Board (see [Removing the Main Board](#)) then perform the following steps:

1. Remove the screws holding Speaker Assembly as shown in Fig. 35

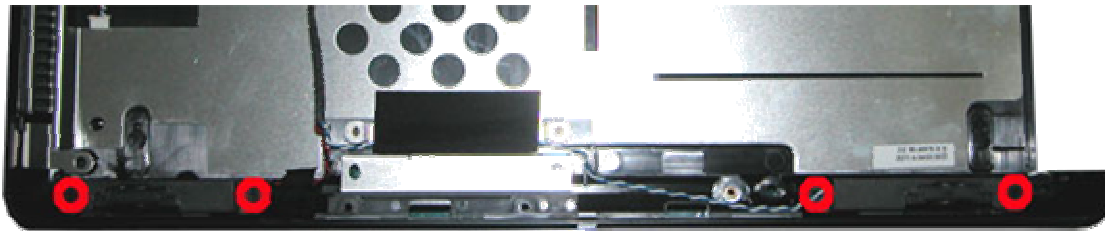


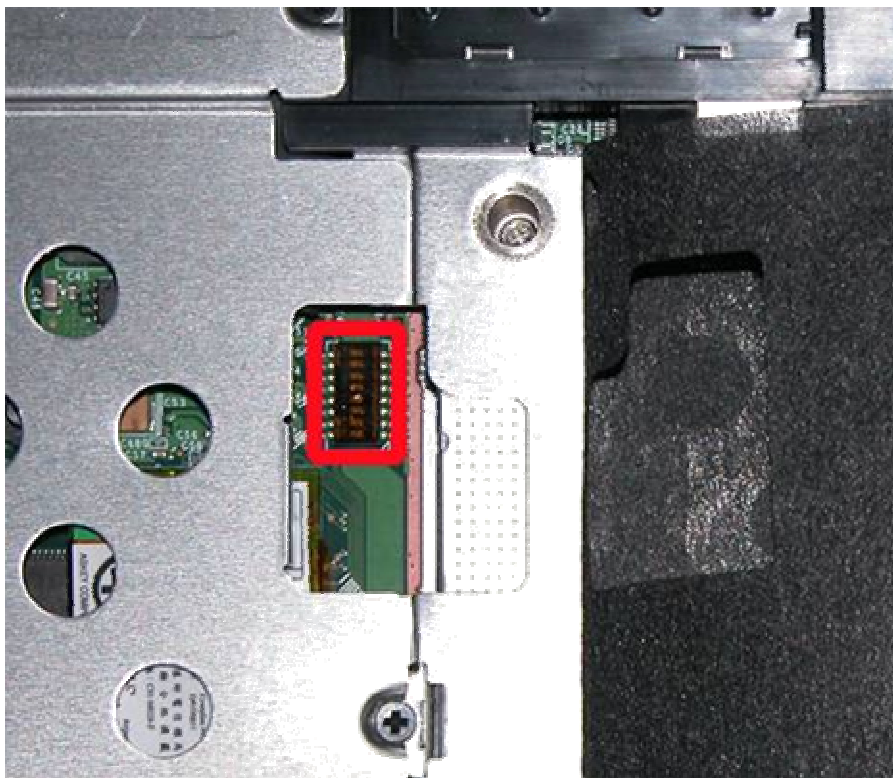
Fig. 35 Speaker Assembly



M2.5x5 Black

2. Carefully remove the Speaker assembly from Bottom Cover and place it aside.

DIP Switch Settings



Dip Switch	Description	Seeting
Bit 1	Keyboard Select 1	Refer to the below table
Bit 2	Keyboard Select 2	Refer to the below table
Bit 3	BIOS Password	OFF: Default ON: Password Override
Bit 4	ODD Type	OFF: CDROM ON: DVD
Bit 5	Crisis Mode	OFF: Default ON: Crisis Mode
Bit 6	USB Mode	OFF: USB 2.0 (WinXP) ON: USB 1.1 (Win98/Win2K)
Bit 7	Reserve	MB ID
Bit 8	Reserve	MB ID

Bit 1	Bit 2	Keyboard code
OFF	OFF	JP Keyboard (Lavie)
ON	OFF	US Keyboard
OFF	ON	UK Keyboard
ON	ON	JP Keyboard (Versa Pro)

Screws

			
M2.5x5 Black	M2.5x11 Silver	M2.5x7 Silver	M2.5x5 Silver
			
M2.5x10 Silver	M2x3 Silver	M2.5x8 Black	M2.5x11 Black
			
M3x5 Black			

Notice

The information in this guide is subject to change without notice.

This guide contains information protected by copyright. No part of this guide may be photocopied or reproduced in any form or by any means without prior written consent from NEC Computers International BV.

NEC COMPUTERS INTERNATIONAL BV SHALL NOT BE LIABLE FOR TECHNICAL OR EDITORIAL ERRORS OR OMISSIONS CONTAINED HEREIN; NOR FOR INCIDENTAL OR CONSEQUENTIAL DAMAGES RESULTING FROM THE FURNISHING, PERFORMANCE, OR USE OF THIS MATERIAL.

Copyright © 2004 NEC Computers International BV. All rights reserved.

NEC is a trademark of NEC Computers International BV.

The names of actual companies and products mentioned herein may be trademarks and/or registered trademarks of their respective owners.

Versa M340/E2000 Disassembly Manual

Author: Allen Koay

First Edition: May 2004

Document Part Number:

Version: 1.1

NECCM

A division of NEC Computers International BV