

Packard Bell
EasyNote W3 Series
(Dragon A)
Disassembly Manual

Table of Contents

Overview	1
Disassembly Instructions	1
Reassembly Instructions	1
Required Tools	1
Hazardous Voltage	2
Avoid Electrostatic Discharge	2
Power Supply Unit	2
Battery and AC Adapter	4
Removing the Hard Disk Drive	4
Bottom Panel	5
CPU and Fan	6
Top Cover	6
Removing the LCD Panel	8
Disassembling the LCD Panel	8
Optical Disk Drive	10
Bottom Base Assembly	11
Top Cover	12
Main Board Assembly	12
Notice	15

Overview

This document contains step-by-step disassembly instructions for the EasyNote W3 (Dragon A) chassis. The instructions are illustrated where necessary with images of the part that is being removed or disassembled.

Packard Bell reserves the right to make changes to the chassis without notice.

Disassembly Instructions

When disassembling the system unit, follow these general rules:

- Turn off the power.
- Disconnect the AC adapter.
- Remove the battery.
- Do not disassemble the system into parts that are smaller than those specified in the instructions.
- Label all removed connectors; note where the connector goes and in what position it was installed.

Reassembly Instructions

Reassembly is the reverse of the disassembly process. Use care to ensure that all cables and screws are returned to their proper positions. Check that no tools or any loose parts have been left inside the chassis. Check that everything is properly installed and tightened.

Required Tools

All disassembly procedures can be performed using the following tools:

- Philips (#2 bit) screwdriver
 - Hex bolt screwdriver
-

Hazardous Voltage

There is hazardous voltage present inside the computer when it is connected to an AC supply, even when the computer's power switch is off. Exposure to hazardous voltage could cause personal injury. To avoid risk of injury, contact an Authorized Service Provider for proper (un)installation of optional hardware devices.

Avoid Electrostatic Discharge

Electrostatic electricity can easily damage circuit cards and integrated circuits (ICs). To reduce risk of damage, store them in protective packaging whenever they are not installed in your system.

Add-in cards can be extremely sensitive to ESD and always require careful handling. After removing the card from the computer, place the card flat on a grounded, static-free surface, component-side up. Use a conductive foam pad if available, but not the card wrapper. Do not slide the card over any surface.

Before you install or remove memory modules, video memory, disk drives, circuit cards or other devices, protect them from static electricity. To do so, make sure your computer's power switch is OFF. Then, unplug the computer's AC power cord. Before picking up the device you (un)install, you should wear an anti-static wrist wrap (available at electronic supply stores). Be sure to connect the wrist wrap to an unpainted metal portion of the computer chassis. As an alternative, you can dissipate electrostatic build-up by touching an unpainted metal portion of the computer chassis with one hand. Then touch the device you are (un)installing with the other hand, and maintain continuous contact with it until it is (un)installed in the computer.

Power Supply Unit

Under no circumstances should you attempt to disassemble the power supply. The power supply contains no user-serviceable parts. Inside the power supply are hazardous voltages that can cause serious personal injury. Always return a defective power supply to your dealer.

WARNING

Ensure that the computer is disconnected from its power source and from all telecommunications links, networks, or modem lines whenever the chassis cover is removed. Do not operate the computer with the cover removed.

AVERTISSEMENT

Assurez-vous que le système est débranché de son alimentation ainsi que de toutes les liaisons de télécommunication, des réseaux, et des lignes de modem avant d'enlever le capot. Ne pas utiliser le système quand le capot est enlevé.

WARNUNG

Das System darf weder an eine Stromquelle angeschlossen sein noch eine Verbindung mit einer Telekommunikationseinrichtung, einem Netzwerk oder einer Modem-Leitung haben, wenn die Gehäuseabdeckung entfernt wird. Nehmen Sie das System nicht ohne die Abdeckung in Betrieb.

ADVERTENCIA

Asegúrese de que cada vez que se quite la cubierta del chasis, el sistema haya sido desconectado de la red de alimentación y de todos los enlaces de telecomunicaciones, de red y de líneas de módem. No ponga en funcionamiento el sistema mientras la cubierta esté quitada.

WAARSCHUWING

Zorg er voor dat alle verbindingen van en naar de computer (stroom, modem, netwerk, etc) verbroken worden voordat de behuizing geopend wordt. Zet de computer nooit aan als de behuizing geopend is.

AVVERTENZA

Prima di rimuovere il coperchio del telaio, assicurarsi che il sistema sia scollegato dall'alimentazione, da tutti i collegamenti di comunicazione, reti o linee di modem. Non avviare il sistema senza aver prima messo a posto il coperchio.

Battery and AC Adapter

To remove the rear bezel, do as follows:

1. Turn off the computer.
2. Disconnect the AC adapter.
3. Remove the battery.

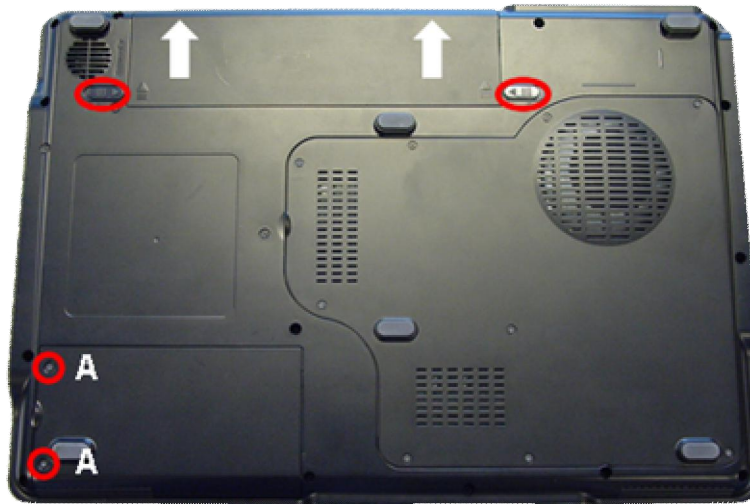


Fig. 1 The bottom base.

Removing the Hard Disk Drive

To remove the hard disk drive, perform the following steps:

1. Remove two screws (2xA) from the HDD cover (as shown in Fig. 1).
2. Remove the HDD cover.
3. Remove one screw (1xB).
4. Slide the HDD to the left, away from its connector. Then lift it out.

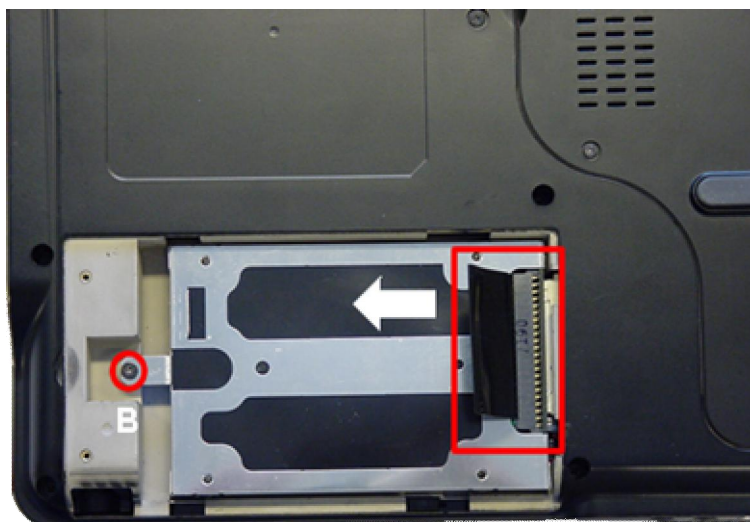


Fig. 2 Removing the hard disk drive.

5. Remove four screws (4xC) from the HDD bracket.
6. Remove two screws (2xD) from the HDD bracket.
7. Remove the HDD bracket and connector.

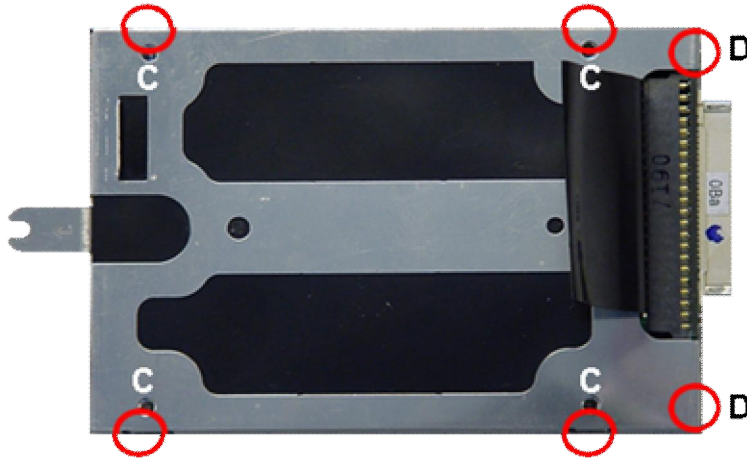


Fig. 3 Removing the hard disk drive.

Bottom Panel

Perform the following steps to remove the bottom panel:

1. Remove nine screws (9xA) and take away the bottom panel.

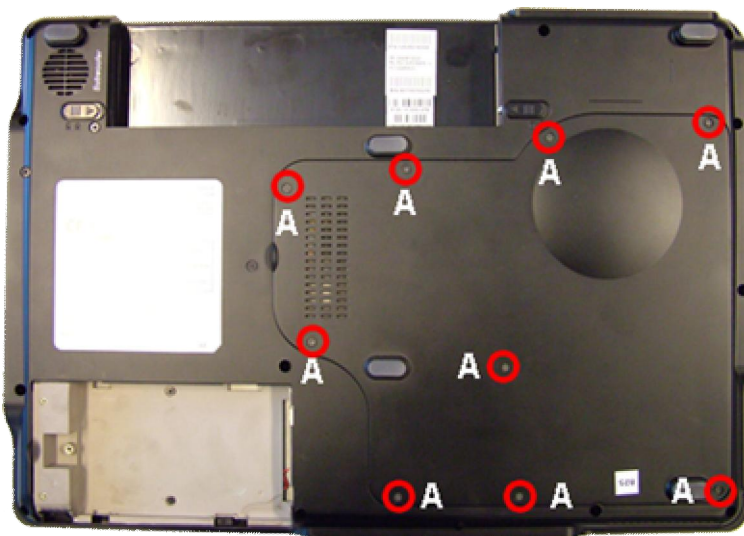


Fig. 4 Removing the bottom panel.

2. Remove the memory module.
3. Remove the Mini-PCI Wireless LAN card and disconnect the antenna cable(s).
4. Remove the screws (2xA) from the modem.
5. Release the ground cable and modem.
6. Disconnect the modem cable from the modem.

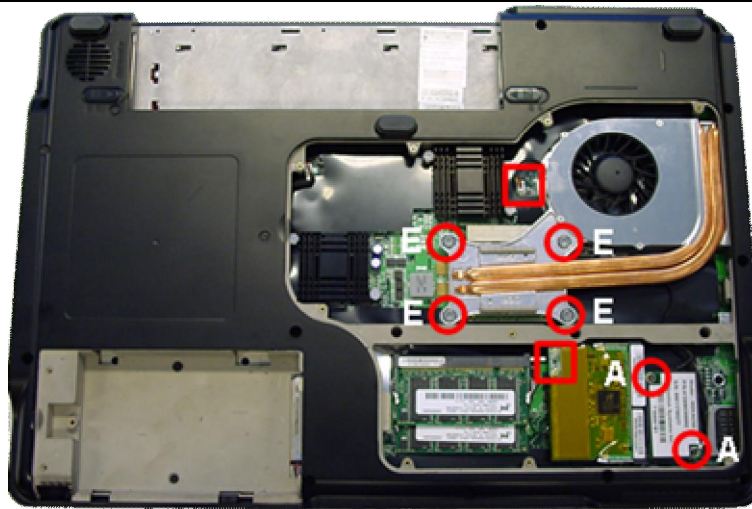


Fig. 5 After removing the bottom panel.

CPU and Heat Sink

To remove the CPU and its heat sink, follow the steps below:

1. Disconnect the CPU fan cable.
2. Remove the screws (4xE) from the heat sink (see Fig. 5).
3. Take away the heat sink.
4. Lift the CPU lever and remove the CPU.

Top Cover

Remove the top cover by following the steps below:

1. Remove the button bar by sliding it to the left.

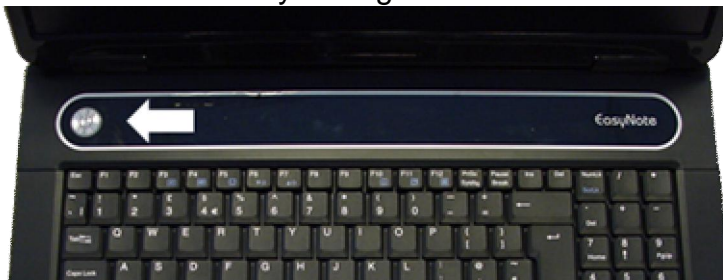


Fig. 6 Removing the button bar.

2. Remove the screws (4xD) from the keyboard.

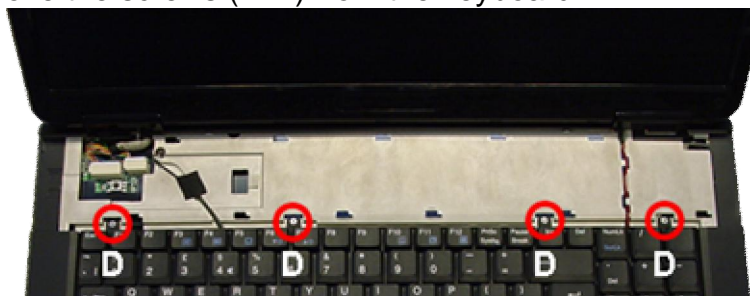


Fig. 7 Removing the keyboard screws.

3. Flip keyboards towards you.
4. Disconnect the keyboard flat cable.

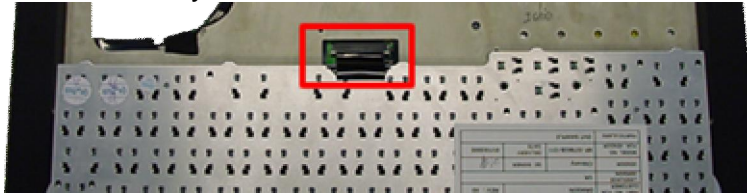


Fig. 8 Removing the keyboard flat cable.

5. Disconnect the touchpad flat cable.

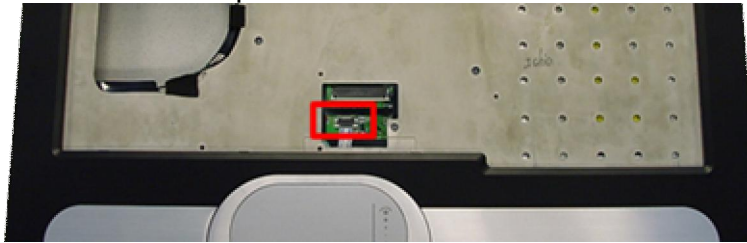


Fig. 9 Disconnecting touchpad flat cable

6. Remove the two hinge covers.



Fig. 10 The hinge covers.

7. Disconnect the lid switch connector.
8. Remove the screw (1xD) and remove the lid switch unit.

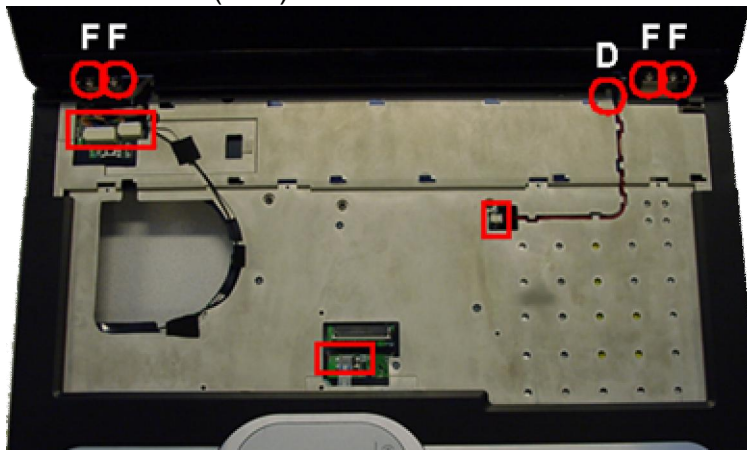


Fig. 11 Lid switch and hinges.

Removing the LCD Panel Assembly

Follow the steps below to remove the LCD panel:

1. Disconnect the two LCD connectors.
2. Release the Wireless antenna cable.
3. Remove the screws (4xF) from the hinges (see Fig. 11).
4. Take away the LCD assembly.

Disassembling the LCD Panel Assembly

To disassemble the LCD panel, follow the steps below:

1. Remove the screw covers and screws (2xG).
2. Remove the screw covers and screws (4xH).
3. Unclip the front bezel by pushing it outwards from the inside.
4. Take away the bezel.



Fig. 12 LCD panel front bezel.

5. Remove the screws (2xH) at the top (see Fig. 13).
 6. Remove the screws (3xD) from the top supporting bracket.
 7. Remove the screws (4xJ) from the hinges.
 8. Remove the screws (2xD) from the lower supporting bracket.
 9. Remove the screws (2xD) from the inverter board.
-

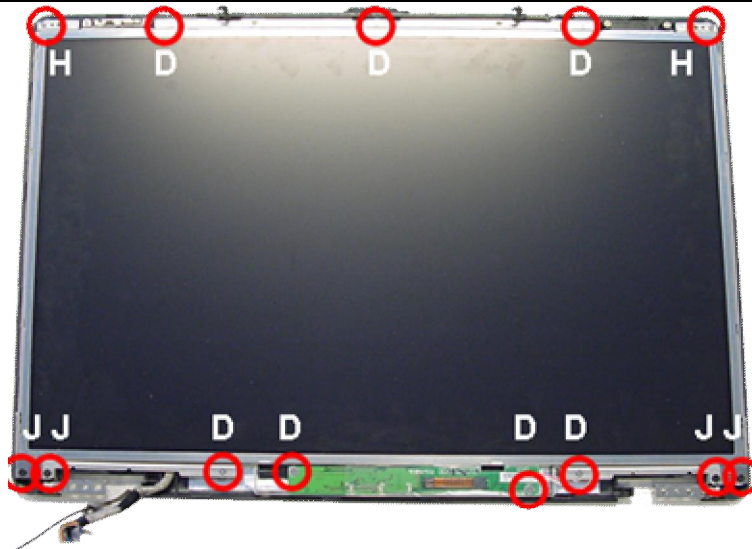


Fig. 13 LCD display panel.

10. Disconnect the inverter backlight connector.

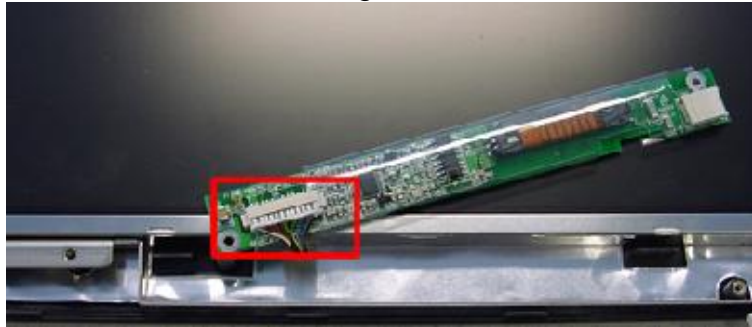


Fig. 14 LCD inverter backlight connector.

11. Remove the lower supporting bracket.
12. Take away the LCD display panel and inverter board.
13. Disconnect the LCD cable from the inverter board.
14. Disconnect the LCD cable from the back of the LCD display panel.

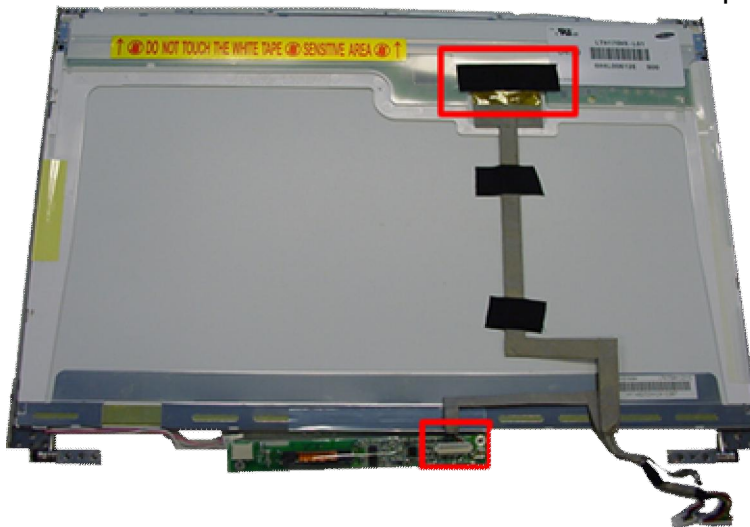


Fig. 15 LCD display cable.

15. Remove the screws (3x D, 1xA) from the left LCD bracket. The same goes for the right bracket.

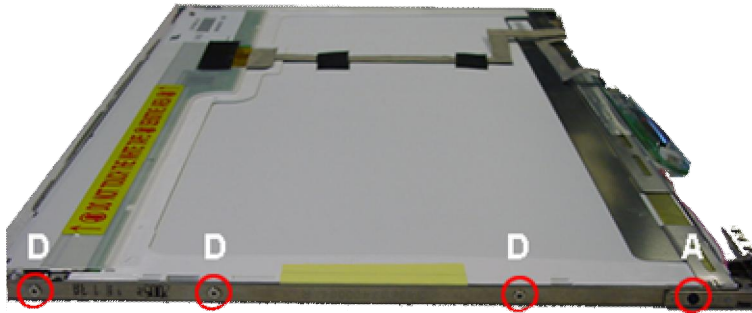


Fig. 16 LCD display cable.

16. Take away the top, left and right bracket from the LCD display panel.
17. Remove the screws (2xD) holding the wireless antenna and take away the antenna.

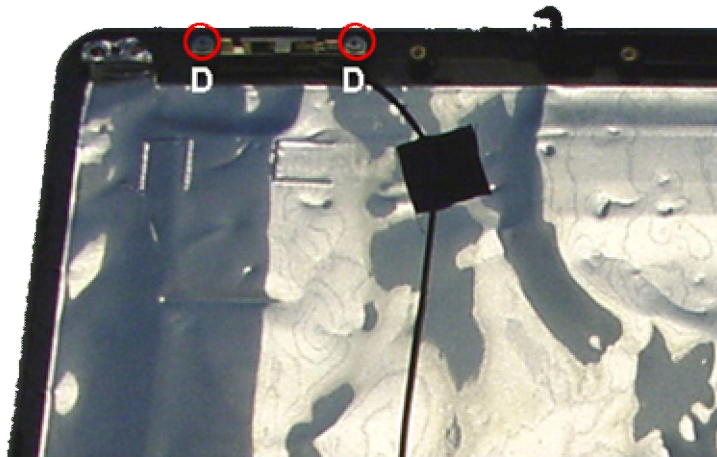


Fig. 17 Wireless antenna.

Optical Disk Drive

To remove the optical disk drive follow the steps below:

1. Remove the screws (1xB, 1xJ) and push the optical disk drive out of its bay.

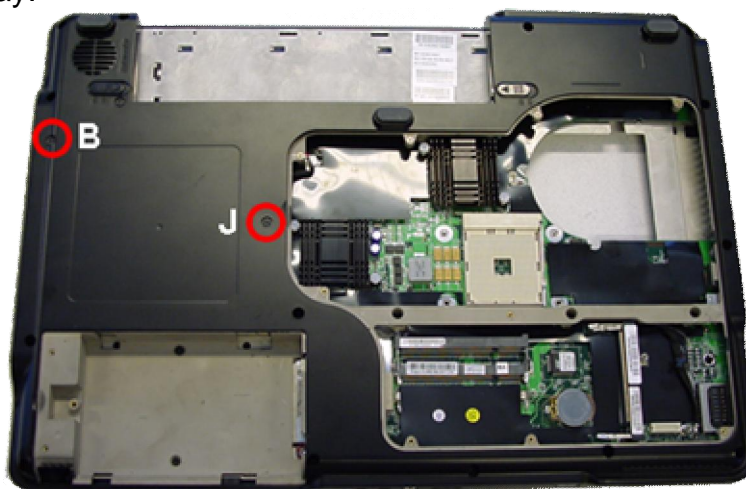


Fig. 18 The screws of the optical disk drive.

2. Remove the screws (2xK) from the side ODD bracket and remove it.
3. Remove the screws (2xK) from the rear ODD bracket and remove it.

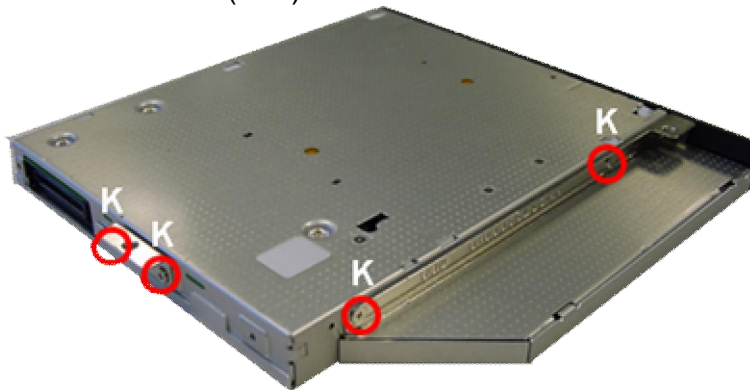


Fig. 19 The screws of the optical disk drive brackets.

Bottom Base Assembly

Disassemble the bottom base assembly as follows:

1. Remove the screws (15xJ, 3xG, 2xB) from the bottom base.

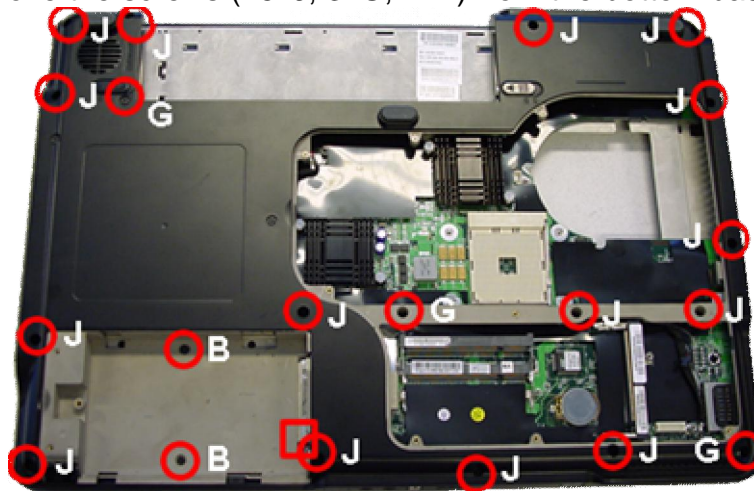


Fig. 20 The bottom base assembly.

2. Remove the screws from the rear (2xB).

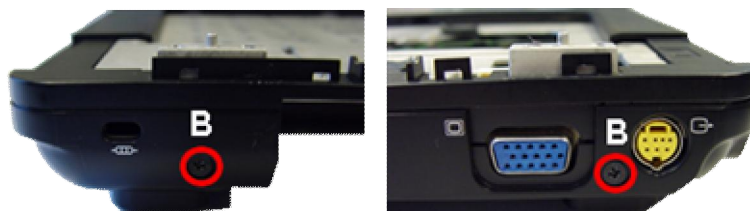


Fig. 21 The screws at the bottom base rear.

3. Remove bottom cover from base assembly.
4. Disconnect the subwoofer connector.
5. Remove the screws (2xG) and lift out the subwoofer assembly.
6. Remove the rubber stabilizers (2xM) from the subwoofer assembly.
7. Remove the screw (1xB) from the modem connector board.

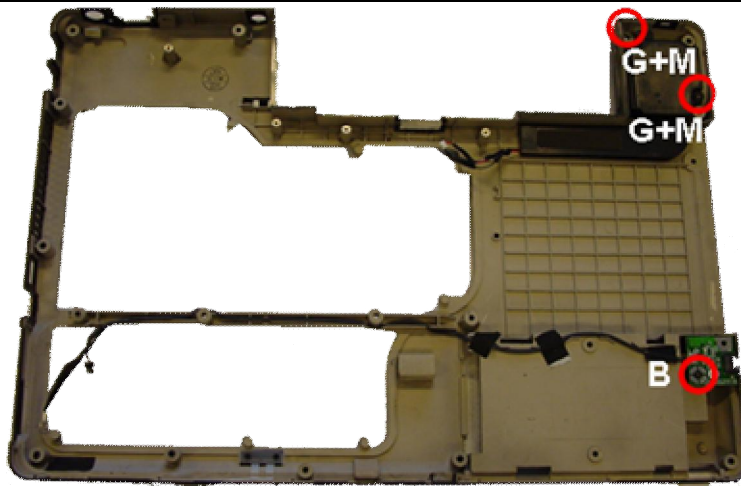


Fig. 22 The bottom cover.

8. Disconnect the cable connector from the modem connector board.

Top Cover

Follow the steps below to remove the top cover:

1. First remove the screws (2xA, 2xL).
2. Then remove the screws (4xJ).

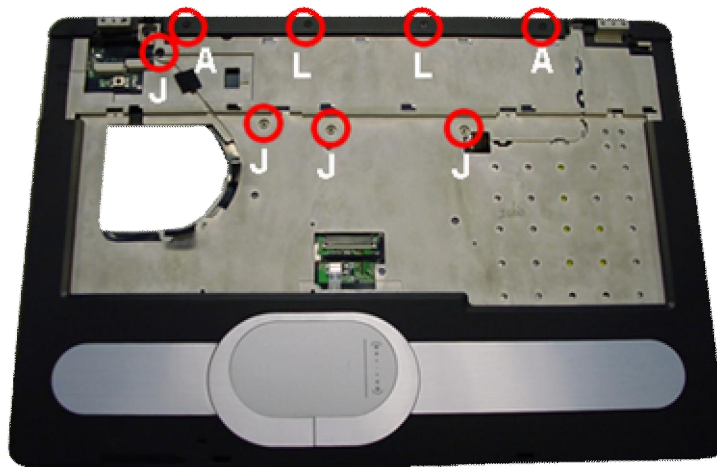


Fig. 23 The top cover.

Note: Make sure that during re-assembly the clips of the top cover lock into place before fastening the screws.

Main Board Assembly

To remove the main board from the top cover, follow the steps below:

1. Flip the top cover around.
2. Disconnect left speaker connector from main board.
3. Remove the screw (1xN).

4. Slightly lift main board and slide out left speaker assembly.
5. Disconnect right speaker from main board.
6. Remove the screw (1xG) and take away the right speaker assembly.
7. Remove the screw (1xB) from main board.
8. Remove the screws (2xO) from the VGA connector on the rear.

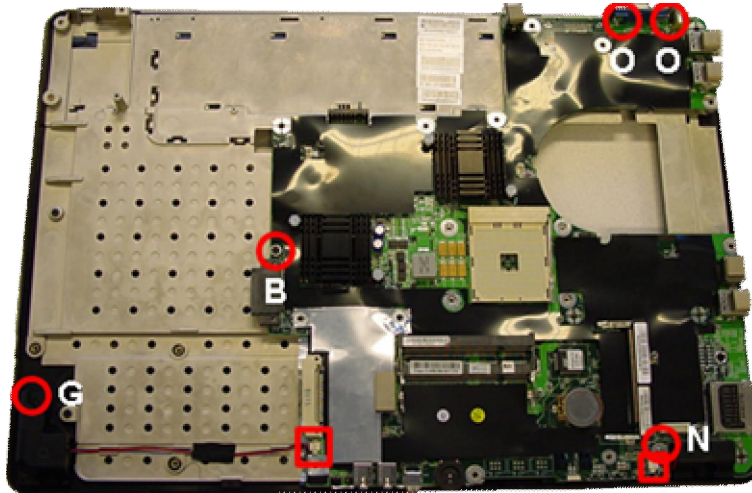


Fig. 24 The main board and speakers.

9. Take away the main board.
10. Partially remove the foil over the touchpad.
11. Disconnect the touchpad cable.



Fig. 25 The touch pad connector.

12. Remove the screws (3xB) and remove the heat plate.
13. Push out the touchpad assembly.

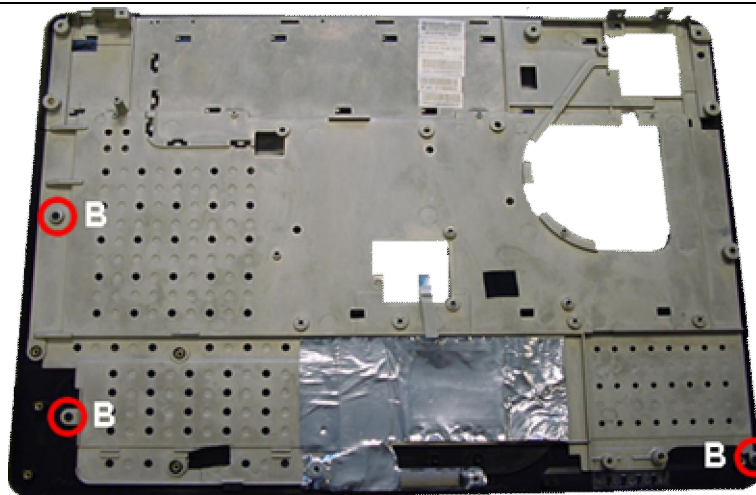


Fig. 26 *Removing the heat plate.*

Notice

The information in this guide is subject to change without notice.

This guide contains information protected by copyright. No part of this guide may be photocopied or reproduced in any form or by any means without prior written consent from NEC Computers International BV.

NEC COMPUTERS INTERNATIONAL BV SHALL NOT BE LIABLE FOR TECHNICAL OR EDITORIAL ERRORS OR OMISSIONS CONTAINED HEREIN; NOR FOR INCIDENTAL OR CONSEQUENTIAL DAMAGES RESULTING FROM THE FURNISHING, PERFORMANCE, OR USE OF THIS MATERIAL.

Copyright © 2005 NEC Computers International BV. All rights reserved.

Packard Bell is a trademark of NEC Computers International BV.
The names of actual companies and products mentioned herein may be trademarks and/or registered trademarks of their respective owners.

The software described in this guide is furnished under a license agreement or nondisclosure agreement. The software may be used or copied only in accordance with the terms of the agreement.

EasyNote W3 (Dragon A) Disassembly Manual

Author: Michael Snijders
First Edition: August 2005
Version: 1.0

Packard Bell
A division of NEC Computers International BV
