

NEC

Versa S940

Packard Bell

EasyNote A7

Disassembly Manual



NEC

Table of contents

| | |
|---------------------------------------|----|
| Overview..... | 3 |
| Technician Notes..... | 3 |
| Disassembly Instructions..... | 3 |
| Reassembly Instructions | 3 |
| Required Tools | 3 |
| Hazardous Voltage..... | 4 |
| Avoid Electrostatic Discharge..... | 4 |
| Power Supply Unit..... | 4 |
| Removing the Battery..... | 5 |
| Removing the Memory Module | 6 |
| Removing the WLAN Card Module | 7 |
| Removing the Hard Disk Drive..... | 8 |
| Removing the Optical Disk Drive | 10 |
| Removing the CPU..... | 11 |
| Removing the Keyboard..... | 13 |
| Removing the LCD Module | 15 |
| Removing the LCD Panel..... | 17 |
| Removing the Top Cover | 19 |
| Removing the Main Board..... | 21 |
| Removing the Speaker Assembly | 23 |
| Removing the Touch Pad..... | 23 |
| DIP Switch Settings..... | 24 |
| Screws..... | 24 |
| Notice | 25 |

Overview

This document contains step-by-steps disassembly instructions for the Versa S940/EasyNote A7 chassis. The instructions are illustrated where necessary with images of the part that is being removed or disassembled. Furthermore, the screws that are removed are shown next to the image of the parts themselves.

NEC reserves the right to make changes to the Versa S940/EasyNote A7 chassis without notice.

Technician Notes

Only technicians authorized by NEC Computers International BV should attempt to repair this equipment. All troubleshooting and repair procedures are detailed to allow only subassembly/module level repair. Because of the complexity of the individual boards and subassemblies, no one should attempt to make repairs at the component level or to make modifications to any printed wiring board. Improper repairs can create a safety hazard. Any indication of component replacement or printed wiring board modifications may void any warranty or exchange allowances.

Disassembly Instructions

When disassembling the system unit, follow these general rules:

- Do not disassemble the system into parts that are smaller than those specified in the instructions.
- Label all removed connectors. Note where the connector goes and in what position it was installed.
- Turn off the power and disconnect all power and all options.

Reassembly Instructions

Reassembly is the reverse of the disassembly process. Use care to ensure that all cables and screws are returned to their proper positions. Check that no tools or any loose parts have been left inside the chassis. Check that everything are properly installed and tightened.

Required Tools

All disassembly procedures can be perform using the following tools:

- PH 0x60 Philips screwdriver
- PH 0x40 Philips screwdriver
- 2.0 x 30 Flat screwdriver
- SW5.0 Spacer screwdriver
- Small tweezers
- Pin

Hazardous Voltage

There is hazardous voltage present inside the computer when it is connect to an AC supply, even when the computer's power switch is off. Exposure to hazardous voltage could cause personal injury. To avoid risk of injury, contact an Authorized Service Provider for proper (UN)installation of optional hardware devices.

Avoid Electrostatic Discharge

Electrostatic electricity can easily damage circuit cards and integrated circuits (ICs). To reduce risk of damage, store them in protective packaging whenever they are not installed in your system.

Add-in cards can be extremely sensitive to ESD and always require careful handling. After removing the card from the computer, place the card flat on a grounded, static-free surface, component-side up. Use a conductive foam pad if available, but not the card wrapper. Do not slide the card over any surface.

Before you install or remove memory modules, video memory, disk drives, circuit cards or other devices, protect them from static electricity. To do so, make sure your computer's power switch is OFF. Then, unplug the computer's AC power cord. Before picking up the device you (un)install, you should wear an anti-static wrist wrap (available at electronic supply stores). Be sure to connect the wrist wrap to an unpainted metal portion of the computer chassis. As an alternative, you can dissipate electrostatic build-up by touching an unpainted metal portion of the computer chassis with one hand. Then touch the device you are (un)installing with the other hand, and maintain continuous contact with it until it is (un)installed in the computer.

Power Supply Unit

Under no circumstances should you attempt to disassemble the power supply. The power supply contains no user-serviceable parts. Inside the power supply are hazardous voltages that can cause serious personal injury. Always return a defective power supply to your dealer.

WARNING

Ensure that the computer is disconnected from its power source and from all telecommunications links, networks, or modem lines whenever the chassis cover is removed. Do not operate the computer with the cover removed.

AVERTISSEMENT

Assurez-vous que le système est débranché de son alimentation ainsi que de toutes les liaisons de télécommunication, des réseaux, et des lignes de modem avant d'enlever le capot. Ne pas utiliser le système quand le capot est enlevé.

WARNUNG

Das System darf weder an eine Stromquelle angeschlossen sein noch eine Verbindung mit einer Telekommunikationseinrichtung, einem Netzwerk oder einer Modem-Leitung haben, wenn die Gehäuseabdeckung entfernt wird. Nehmen Sie das System nicht ohne die Abdeckung in Betrieb.

ADVERTENCIA

Asegúrese de que cada vez que se quite la cubierta del chasis, el sistema haya sido desconectado de la red de alimentación y de todos lo enlaces de telecomunicaciones, de red y de líneas de módem. No ponga en funcionamiento el sistema mientras la cubierta esté quitada.

WAARSCHUWING

Zorg er voor dat alle verbindingen van en naar de computer (stroom, modem netwerk, etc) verbroken worden voordat de behuizing geopend wordt. Zet de computer nooit aan als de behuizing geopend is.

AVVERTENZA

Prima di rimuovere il coperchio del telaio, assicurarsi che il sistema sia scollegato dall'alimentazione, da tutti i collegamenti di comunicazione, reti o linee di modem. Non avviare il sistema senza aver prima messo a posto il coperchio

Removing the Battery

Perform the following steps to remove the battery:

1. Make sure to power off the Versa S940/EasyNote A7.
2. Turn the unit upside down.
3. Unlock the battery and slide it out of its place as the arrow shows in Fig. 1



Fig. 1 Removing the battery

Removing the Memory Module

To remove the Memory Module, first remove the battery (see [Removing the Battery](#)), then perform the following steps:

1. Release the three screws retaining the memory module cover.



Fig. 2 Removing the screws retaining the memory module slot cover

2. Unclip the memory module as shown in Fig. 3



Fig. 3 Removing the memory module

3. Remove the memory module from its slot and put it aside.

Removing the WLAN Card Module

To remove the WLAN Card Module, first remove the Memory Module Cover (see [Removing Memory Module](#)) then perform the following steps:

1. Disconnect the wireless antenna connector and release the WLAN Card Module as shown in **Error! Reference source not found.**



Fig. 4 WLAN Card Module

2. Lift up the WLAN Card Module and put it aside.

Removing the Hard Disk Drive

To remove the hard disk drive, first remove the battery (see [Removing the Battery](#)), then perform the following steps:

1. Remove the screws as shown in Fig. 5

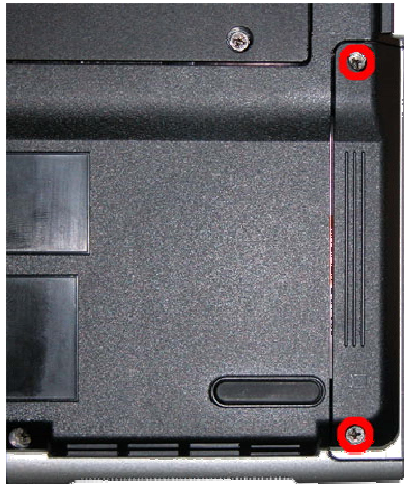


Fig. 5 Removing the Hard disk drive cover



M2.5x8 Copper

2. Carefully pull the HDD module out from the base unit.

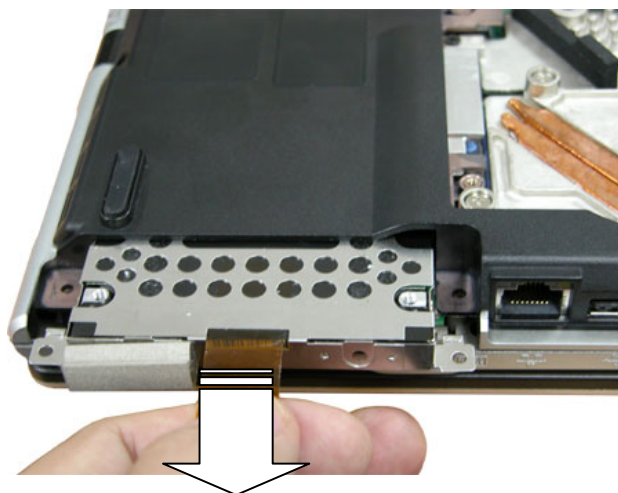


Fig. 6 Pulling HDD module

3. Remove four screws that around HDD module.

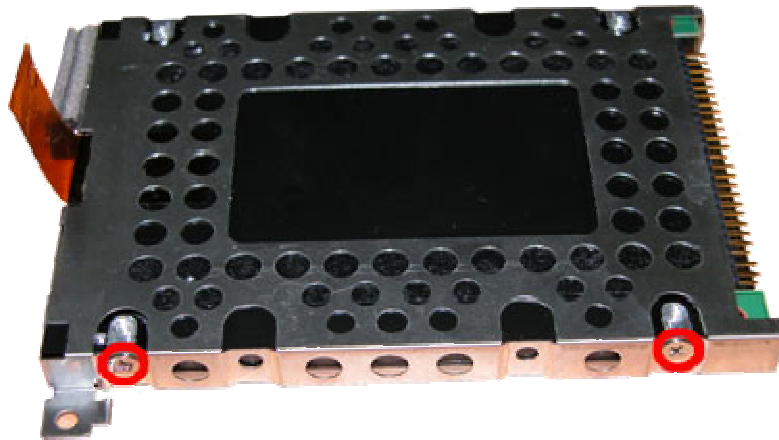
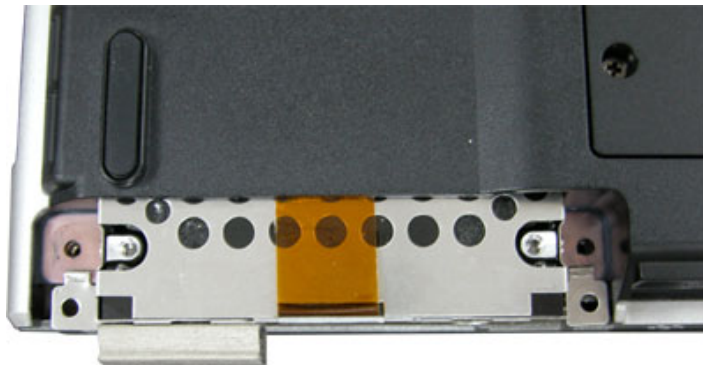


Fig. 7 HDD module

Note: When installing HDD, make sure the HDD module strap properly insert into base unit as shown in below picture.



Removing the Optical Disk Drive

To remove the ODD, first remove the battery (see [Removing the Battery](#)) and Memory Module Cover (see [Removing Memory Module](#)) then perform the following steps:

1. Use pin to eject the optical drive via emergency eject hole as shown in Fig. 8



Fig. 8 Eject the optical drive

1. Pull the ODD module out from the base unit as shown in Fig. 9

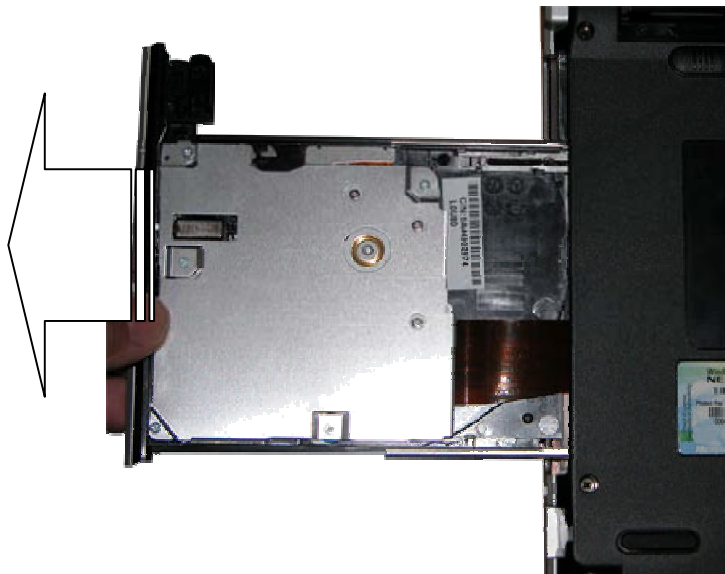


Fig. 9 Pulling the optical drive out from the base unit

Removing the CPU

To remove the CPU first remove the battery (see [Removing the Battery](#)) then perform the following steps:

1. Losses four screws that retaining the CPU cover as shown in Fig. 10

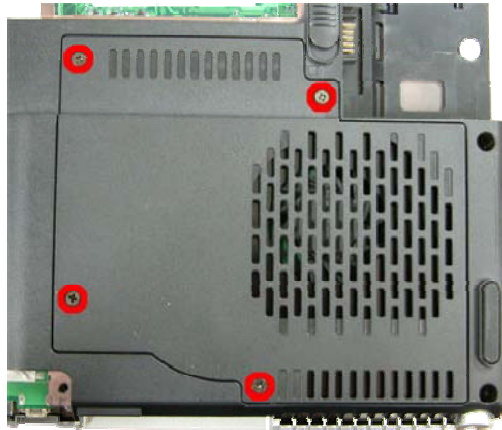


Fig. 10 Removing the screws retaining CPU cover

2. Remove the CPU Fan screws, disconnect the CPU Fan connector and unscrew screws on CPU Heat Sink in descending order (3→2→1) as shown in Fig. 11

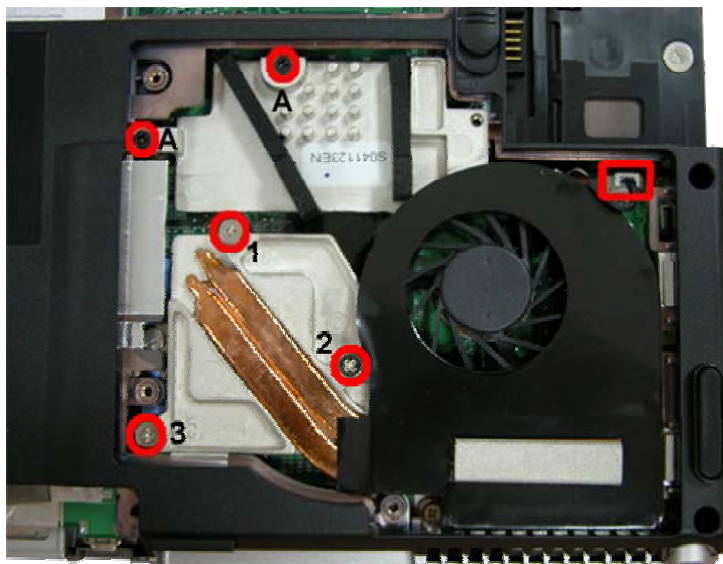


Fig. 11 CPU Heat Sink



Note: When install CPU heat sink, screws must be secured in ascending order (1→2→3).

3. Unlock the CPU from the CPU socket and lift up the CPU carefully.



Fig. 12 Unlocking the CPU

Removing the Keyboard

To remove the Keyboard, first remove the battery (see [Removing the Battery](#)), then perform the following steps:

1. Release two screws on keyboard cover as shown in Fig. 13



Fig. 13 Releasing the keyboard cover



2. Lift up the keyboard cover carefully as shown in Fig. 14



Fig. 14 Lifting up the Keyboard Cover

3. Unscrew two screws at the bottom as shown in Fig. 15



Fig. 15 Unscrewing Keyboard screws



A = M2.5x5 Black



B= M2.5x6
Copper

Caution: If using wrong screws during keyboard assemble might result damage to keyboard. Thus please mark those screws carefully during dissemble.

4. Flip over the unit and release remaining screw holding keyboard as shown in Fig. 16



Fig. 16 Screw holding Keyboard



M2.5x3 Silver

5. Lift up the keyboard and disconnect it from the system as shown in Fig. 17

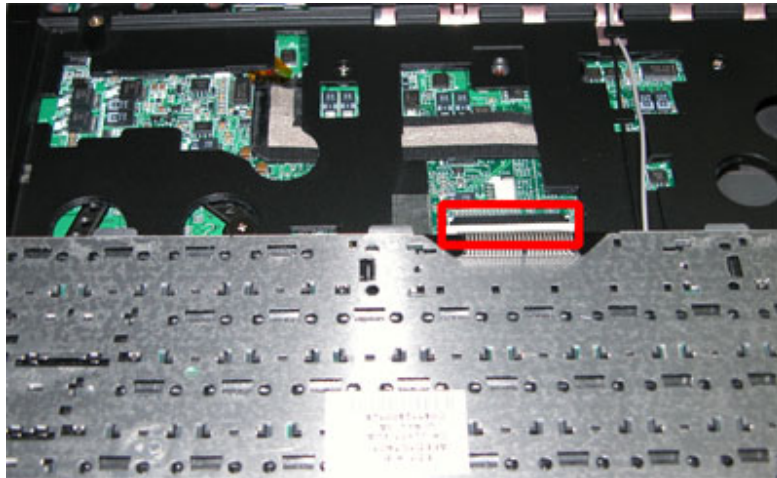


Fig. 17 Disconnecting the keyboard flat cable

Removing the LCD Module

To remove the LCD Module first remove the battery (see [Removing the Battery](#)), remove WLAN Card Module (see [Removing WLAN Card Module](#)) and remove the Keyboard (see [Removing the Keyboard](#)) then perform the following steps:

1. Release LCD cable from base unit.

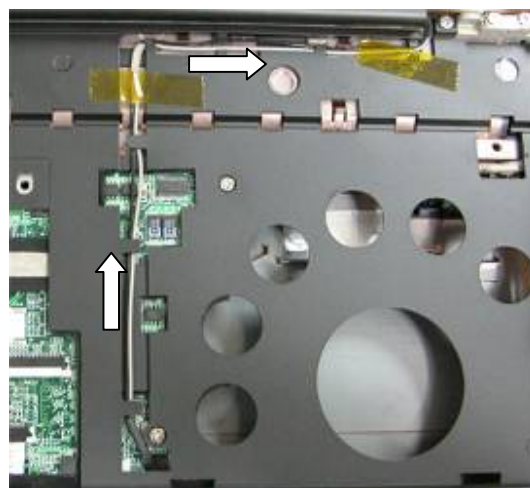


Fig. 18 Releasing LCD cable

2. Disconnect LCD Cable Connection and remove four screws retaining the Heat Plate as shown in Fig. 19



Fig. 19 Removing the screws retaining the LCD module



M2.5x6 Silver

3. Carefully lift up the LCD Module.

Removing the LCD Panel

To remove the LCD panel, first remove the LCD module (see [Removing the LCD Module](#)), then perform the following steps:

1. Use a pin to remove the rubber cover on the LCD module as shown in Fig. 20
2. Remove all screws as shown in Fig. 20 and remove carefully the LCD cover.



Fig. 20 Removing the rubber covers & screws on the LCD Module



3. Carefully removing the LCD Bezel as shown in Fig. 21



Fig. 21 Removing the LCD Bezel

4. Release four screws at the both side of LCD hinge as shown in Fig. 22



Fig. 22 Unscrew LCD Penal



M2.5x4 Copper

5. Disconnect all connectors on inverter board as shown in Fig. 23



Fig. 23 Removing the Inverter Board

6. Carefully lift up the LCD panel.
7. Remove the screws at both sides of the LCD panel in order to release the LCD hinges as shown in Fig. 24



Fig. 24 Removing the LCD Panel hinges



M2x4 Silver

Removing the Top Cover

To remove the Top Cover, first remove the battery (see [Removing the Battery](#)), remove the HDD (see [Removing the Hard Disk Drive](#)), remove the Optical Disk Drive (see [Removing the Optical Disk Drive](#)), remove the CPU (see [Removing the CPU](#)), remove the Keyboard (see [Removing the Keyboard](#)) and remove the LCD Module (see [Removing the LCD Module](#)) then perform the following steps:

1. Remove all screws on the bottom of the base unit as shown in Fig. 25

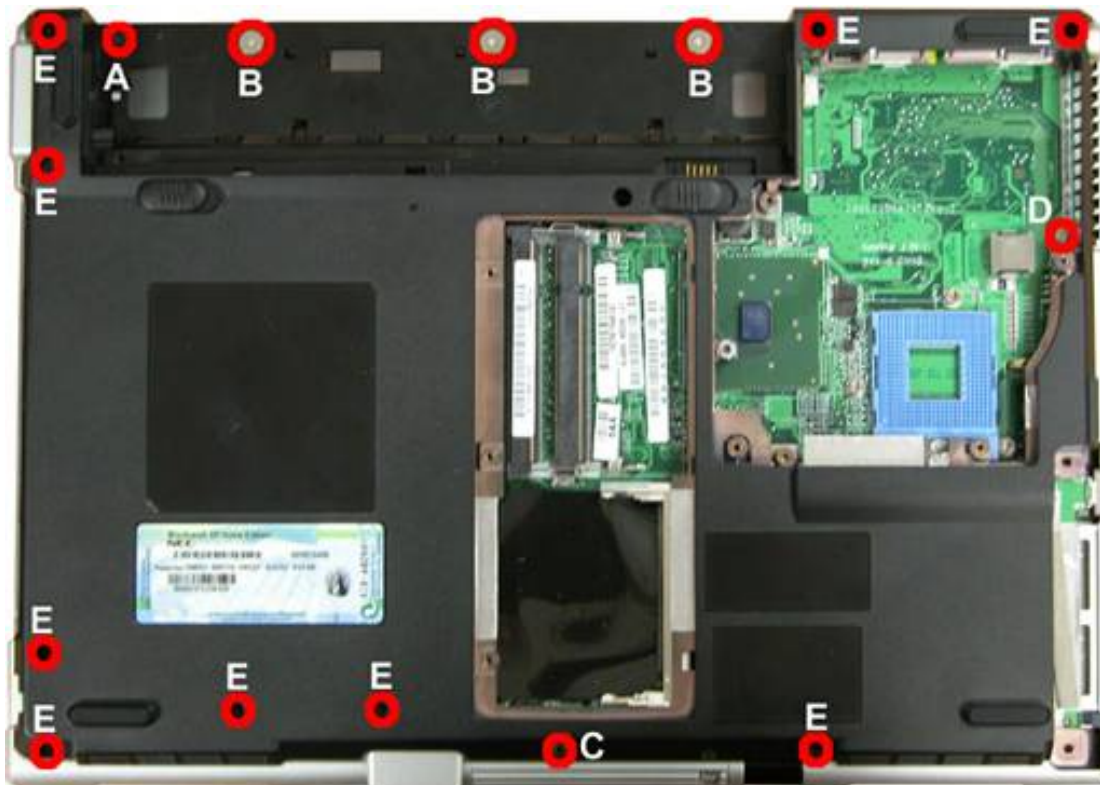


Fig. 25 Bottom Cover



2. Release two screws at the rear of system as shown in Fig. 26



Fig. 26 Rear view



3. Disconnect the Touch Pad Connector and remove all screws as shown in Fig. 27

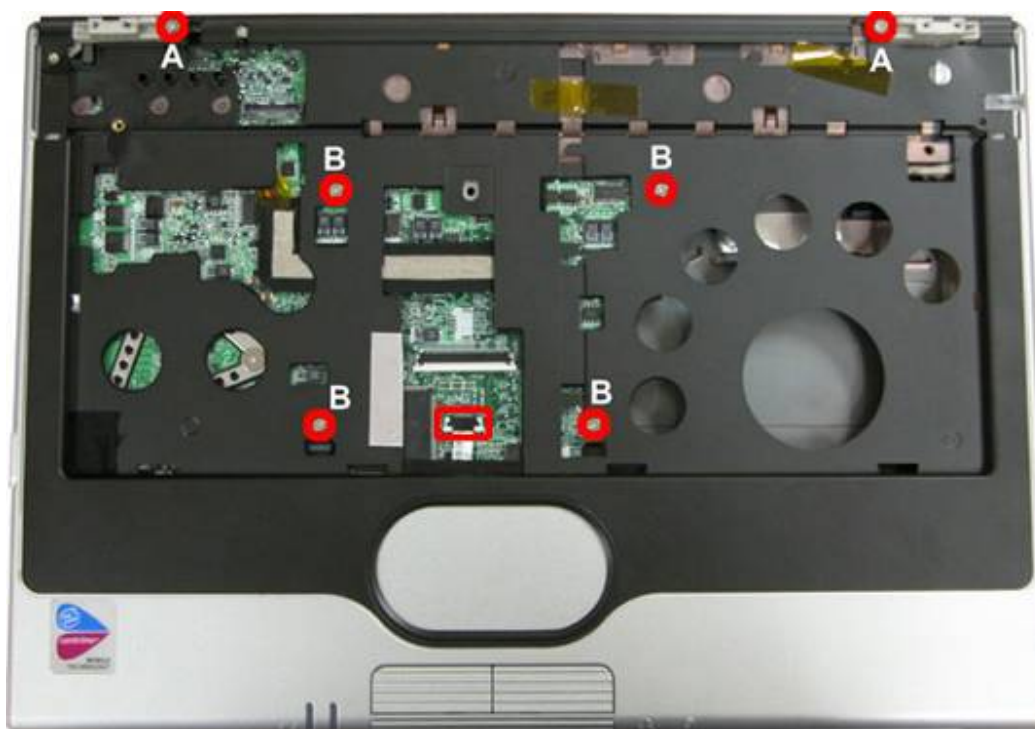


Fig. 27 Top cover

4. Carefully lift up the Top Cover.



A = M2.5x4 Silver



B = M2.5x5 Silver

Removing the Main Board

To remove the Main Board, first remove the Top Cover (see [Removing Top Cover](#)) then perform the following steps:

1. Remove all connection and screws on main board as shown in Fig. 28

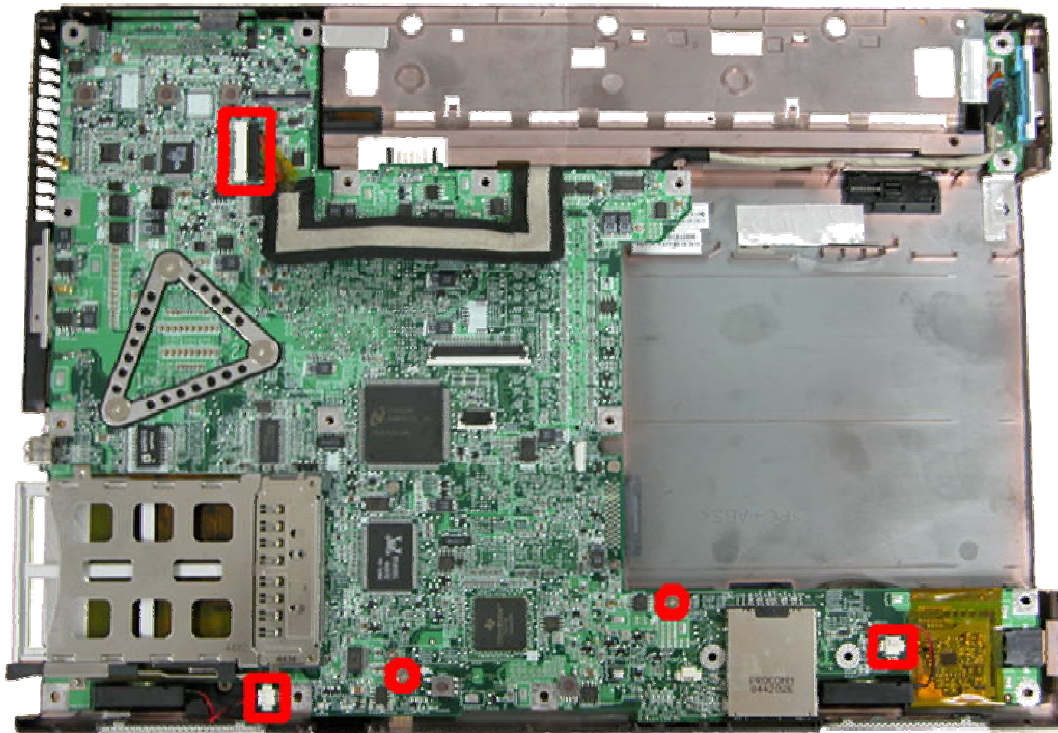


Fig. 28 Main board

2. Carefully lifting up main board from the rear of the unit as shown in Fig. 29

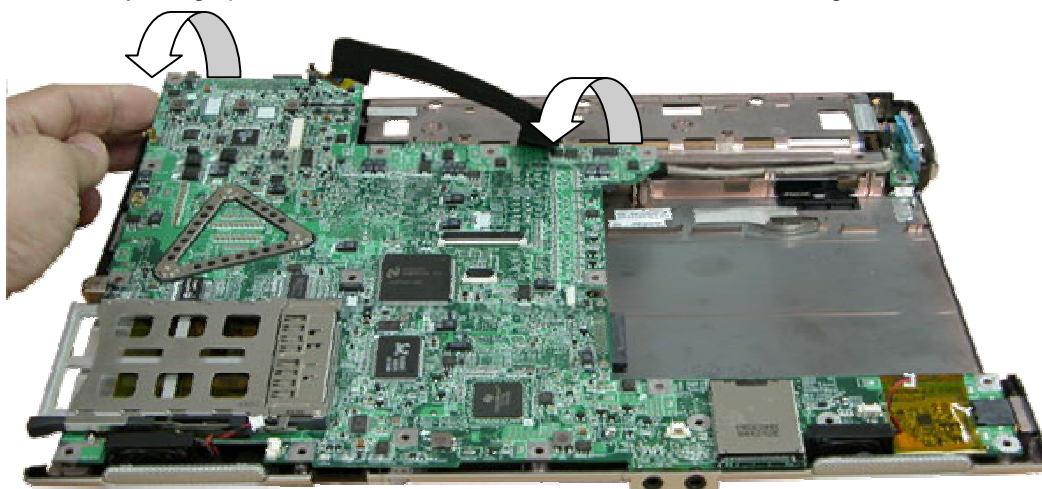


Fig. 29 Lifting up main board

3. Disconnect Audio board from main board as shown in Fig. 30



Fig. 30 VGA board

4. This step only applicable to EasyNote A7. Flip over the main board and release two screws on S-Video Board as shown in Fig. 31



Fig. 31 S-video board on Main Board



Removing the Speaker Assembly

To remove the Speaker Assembly, first remove the Main Board (see [Removing the Main Board](#)) then perform the following steps:

1. Remove the screws holding Speaker Assembly as shown in Fig. 32



Fig. 32 Speaker Assembly

2. Carefully remove the Speaker assembly from Bottom Cover and place it aside.

Removing the Touch Pad

To remove the touch pad, first remove the top cover (see [Removing the Top Cover](#)), then perform the following steps:

1. Unscrew the screws on the Top Cover as shown in Fig. 33

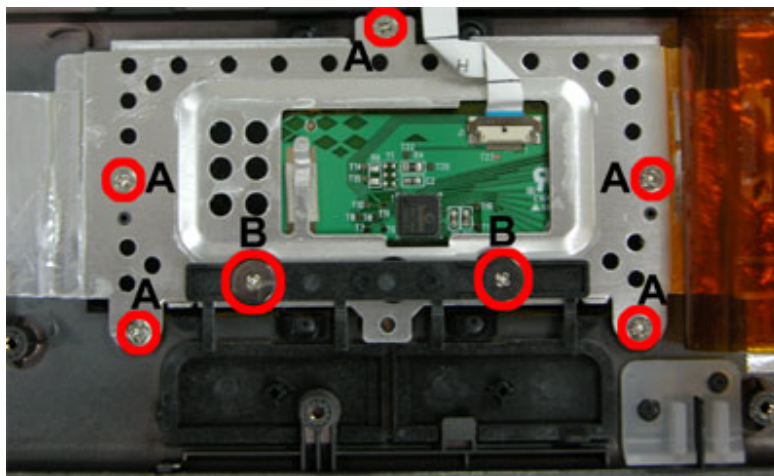


Fig. 33 Touch Pad

2. Carefully separate the Touch Pad module from Top cover.



M2x4 Silver



A = M2x4 Silver



B = M2.5x2.5 Silver

DIP Switch Settings

No DIP switch available on ED1 platform.

Screws

| | | | |
|--|--|---|---|
|  |  |  |  |
| M2.5x2.5 Silver | M2.5x4 Silver | M2.5x8 Copper | M2.5x5 Black |
|  |  |  |  |
| M2.5x5 Silver | M2.5x6 Silver | M2.5x6 Copper | M2x7 Silver |
|  |  |  |  |
| M2x3 Silver | M2x4 Silver | M2.5x4 Copper | M2.5x3 Silver |
|  |  | | |
| M2x4.5 Black | M4x3 Silver | | |

Notice

The information in this guide is subject to change without notice.

This guide contains information protected by copyright. No part of this guide may be photocopied or reproduced in any form or by any means without prior written consent from NEC Computers International BV.

NEC COMPUTERS INTERNATIONAL BV SHALL NOT BE LIABLE FOR TECHNICAL OR EDITORIAL ERRORS OR OMISSIONS CONTAINED HEREIN; NOR FOR INCIDENTAL OR CONSEQUENTIAL DAMAGES RESULTING FROM THE FURNISHING, PERFORMANCE, OR USE OF THIS MATERIAL.

Copyright © 2005 NEC Computers International BV. All rights reserved.

NEC is a trademark of NEC Computers International BV.

The names of actual companies and products mentioned herein may be trademarks and/or registered trademarks of their respective owners.

Versa S940/EasyNote A7 Disassembly Manual

Author: Allen Koay

First Edition: January 2005

Document Part Number:

Version: 1.0

NECCM

A division of NEC Computers International BV