

# FIRST INTERNATIONAL COMPUTER, INC.

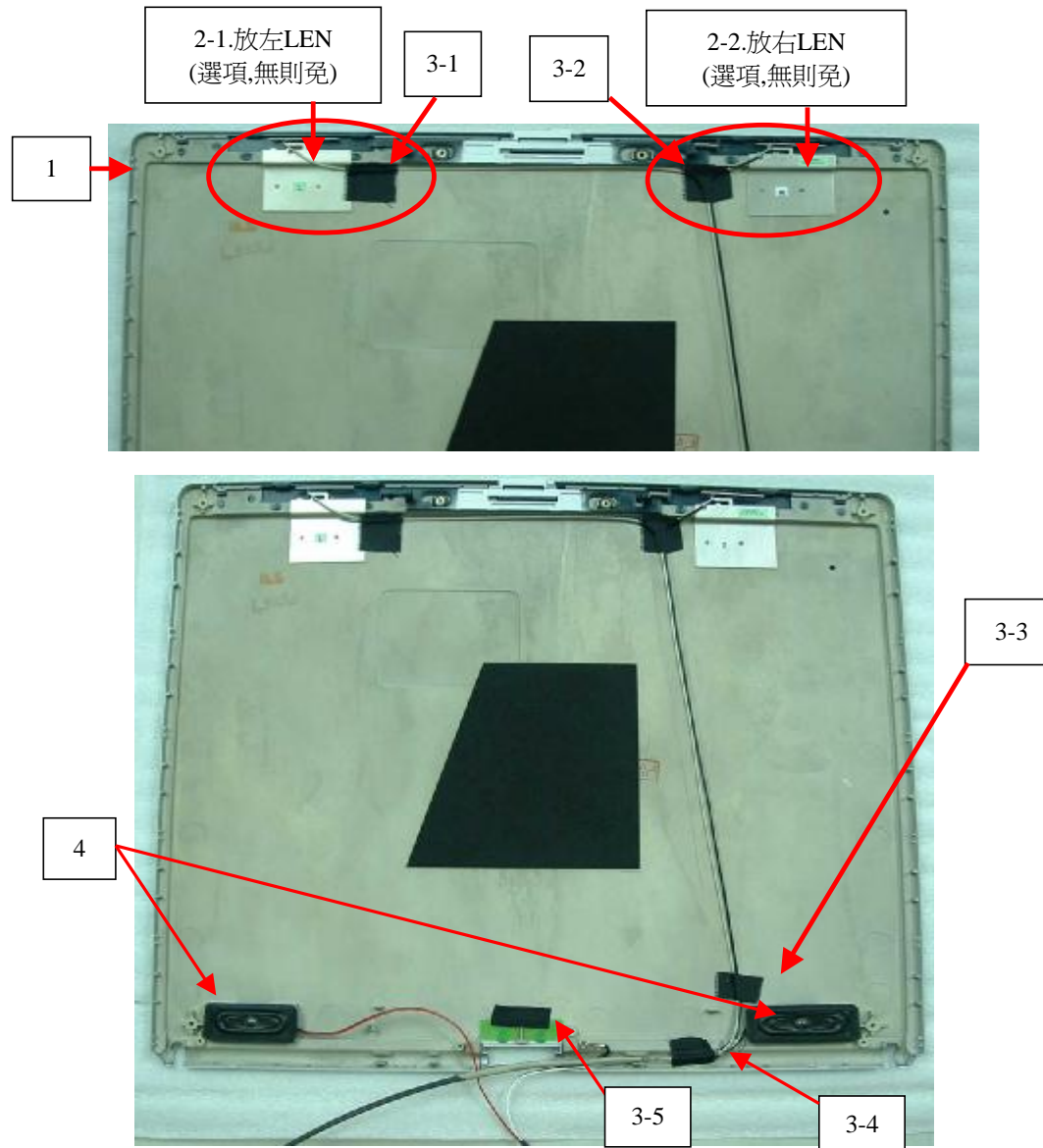
## WORKING INSTRUCTION

**Issue No. : QP8-1N15-01-13016**

**Issue Date : 01/23/2002**

Page : 01

Dept.: IE Linko Factory I

[illegible]

Approved: Anthony

Initial: Wood.H

ISO Doc. No.: QF8-1N15-04 VER:1

# FIRST INTERNATIONAL COMPUTER, INC.

## WORKING INSTRUCTION

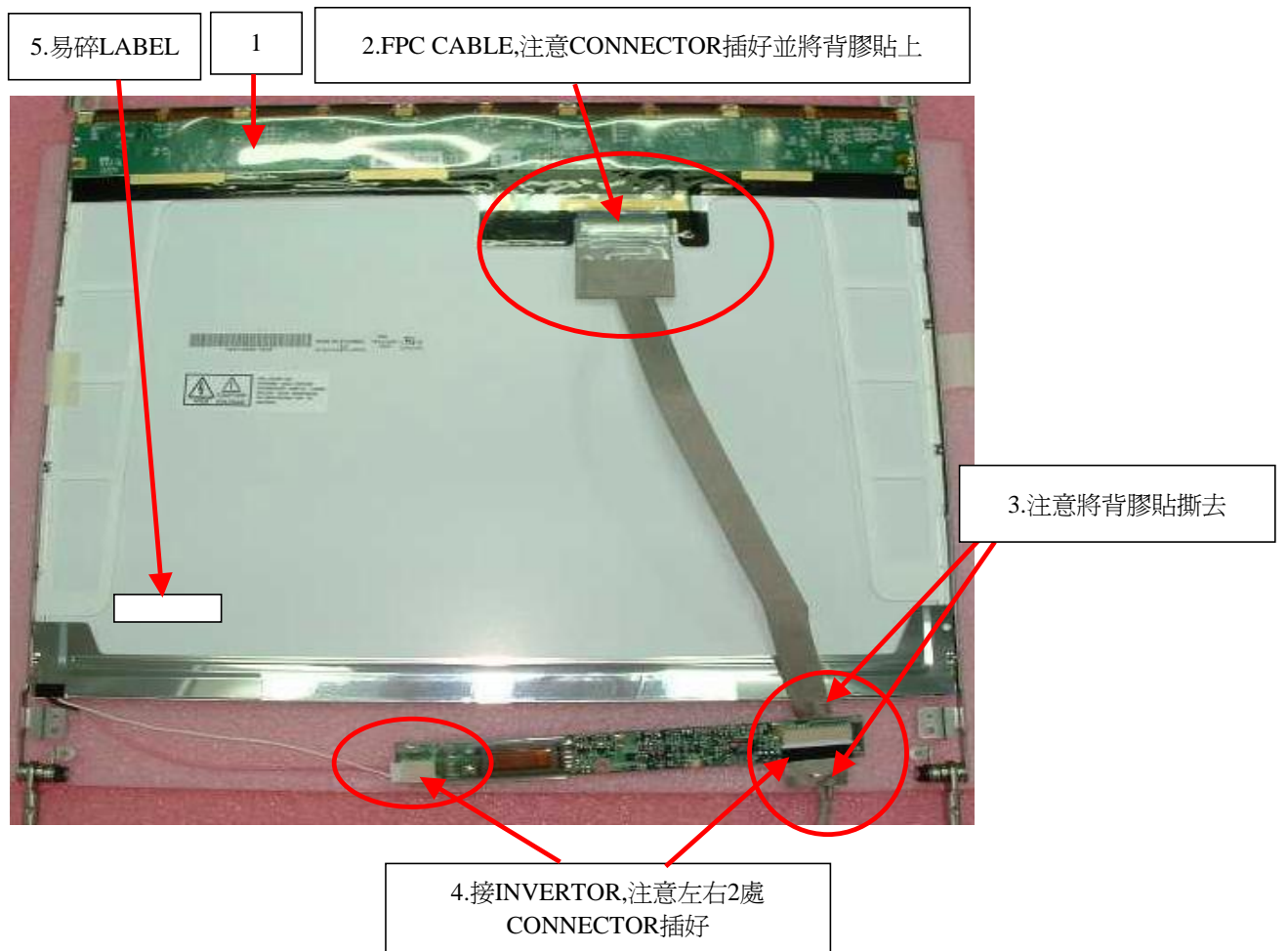
**Issue No. : QP8-1N15-01-13016**

**Issue Date : 02/06/2002**

Page : 02

Dept.: IE Linko Factory I

<b>Model Name</b>		MB02 SERIES	
<b>Station Item</b>		14" LCD ASS'Y (2)	
<b>MEMO</b>	LCD PANEL		
<b>Reference Std. Time</b>		30	sec
No	Description	P/N	Q'ty
1	14.1" LCD AU B141XN04 V2.5XXX	71-10629-01	1
2	14.1" COAXIAL CABLE AU B141XN04	22-11101-00	1
	14.1" COAXIAL CABLE CMO N141X7-L03	22-11102-00	1
	14.1" COAXIAL CABLE HSD 141PX13-A	22-11104-00	1
3	背膠貼撕去動作	NA	NA
4	INVERTER T90I056.00 AMBIT	12-01573-01	1
	INVERTER IV14149/T SUMIDA	12-01573-02	1
5	易碎LABEL	FIC提供	1
<b>Fixture</b>			
<b>Notice</b>			
<b>Updated Records</b>	<b>VER</b>	<b>Date</b>	<b>Contents</b>
	A	01/23/2003	第一次發行
	B	02/06/2003	Update Process



Approved: Anthony

Initial: Wood.H

ISO Doc. No.: QF8-1N15-04 VER:1

# FIRST INTERNATIONAL COMPUTER, INC.

## WORKING INSTRUCTION

**Issue No. : QP8-1N15-01-13016**

**Issue Date : 02/06/2002**

Page : 03

Dept.: IE Linko Factory I

<b>Model Name</b>		MB02 SERIES	
<b>Station Item</b>		14.1" LCD ASS'Y (3)	
<b>MEMO</b>	LCD PANEL+HINGE BRACKET		
<b>Reference Std. Time</b>		30	sec
No	Description	P/N	Q'ty
1	HINGE-L(AU B141XN04)	24-84143-00	1
	HINGE-R(AU B141XN04)	24-84142-00	1
	HINGE-L(CMO N141X7-L03)	24-84145-00	1
	HINGE-R(CMO N141X7-L03)	24-84144-00	1
	HINGE-L(HSD 141PX13-A)	24-84153-00	1
	HINGE-R(HSD 141PX13-A)	24-84151-00	1
2	SCREW M2*0.4+3I-NI(NYLOK)	24-10590-01	4
<b>Fixture</b>	00號電動起子		
<b>Notice</b>	扭力2.0~2.5KG.CM		
<b>Updated Records</b>	VER	Date	Contents
	A	01/23/2003	第一次發行
	B	02/06/2003	Update Picture



1-L

2-1



2-2



1-R

2-3



2-4

Approved: Anthony

**Initial: Wood.H**

ISO Doc. No.: QF8-1N15-04 VER:1

# FIRST INTERNATIONAL COMPUTER, INC.

## WORKING INSTRUCTION

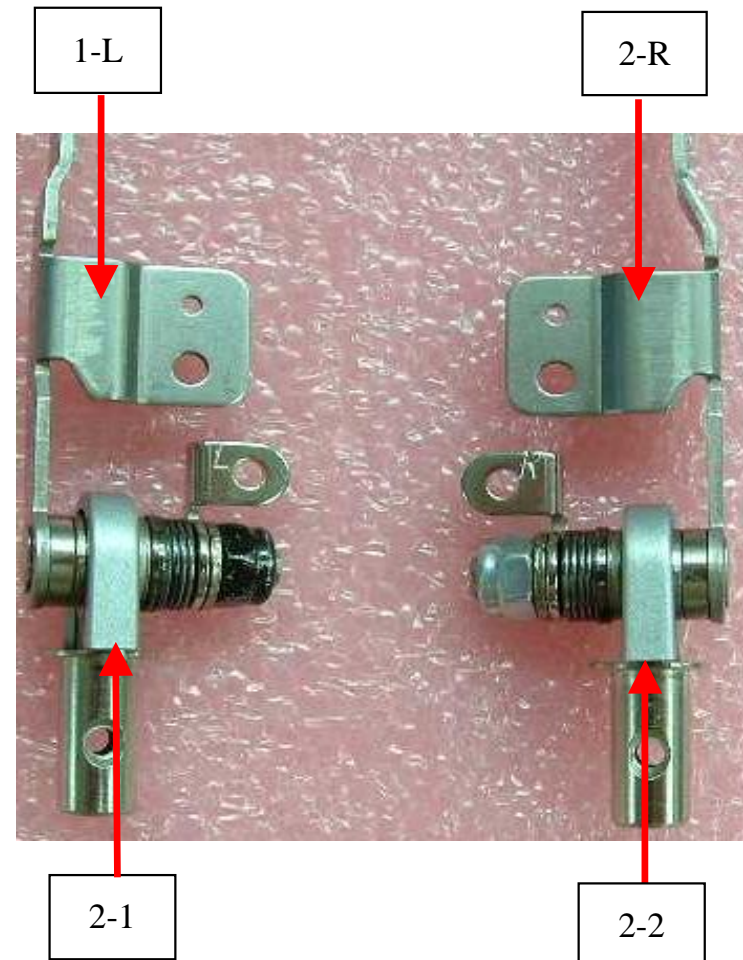
**Issue No. : QP8-1N15-01-13016**

**Issue Date : 02/06/2002**

Page : 0301

Dept.: IE Linko Factory I

<b>Model Name</b>			MB02 SERIES	
<b>Station Item</b>			14.1" LCD ASS'Y (3-1)	
<b>MEMO</b>	HINGE BRACKET+COVER			
<b>Reference Std. Time</b>			10	sec
<b>No</b>	<b>Description</b>		<b>P/N</b>	<b>Q'ty</b>
1	HINGE-L(AU B141XN04)		24-84143-00	1
	HINGE-R(AU B141XN04)		24-84142-00	1
	HINGE-L(CMO N141X7-L03)		24-84145-00	1
	HINGE-R(CMO N141X7-L03)		24-84144-00	1
	HINGE-L(HSD 141PX13-A)		24-84153-00	1
	HINGE-R(HSD 141PX13-A)		24-84151-00	1
2	HINGE COVER		24-45650-00	2
<b>Fixture</b>				
<b>Notice</b>				
<b>Updated Records</b>	<b>VER</b>	<b>Date</b>	<b>Contents</b>	
	A	02/06/2003	第一次發行	



**Approved: Anthony**

**Initial: Wood.H**

ISO Doc. No.: QF8-1N15-04 VER:1



# FIRST INTERNATIONAL COMPUTER, INC.

## WORKING INSTRUCTION

**Issue No. : QP8-1N15-01-13016**

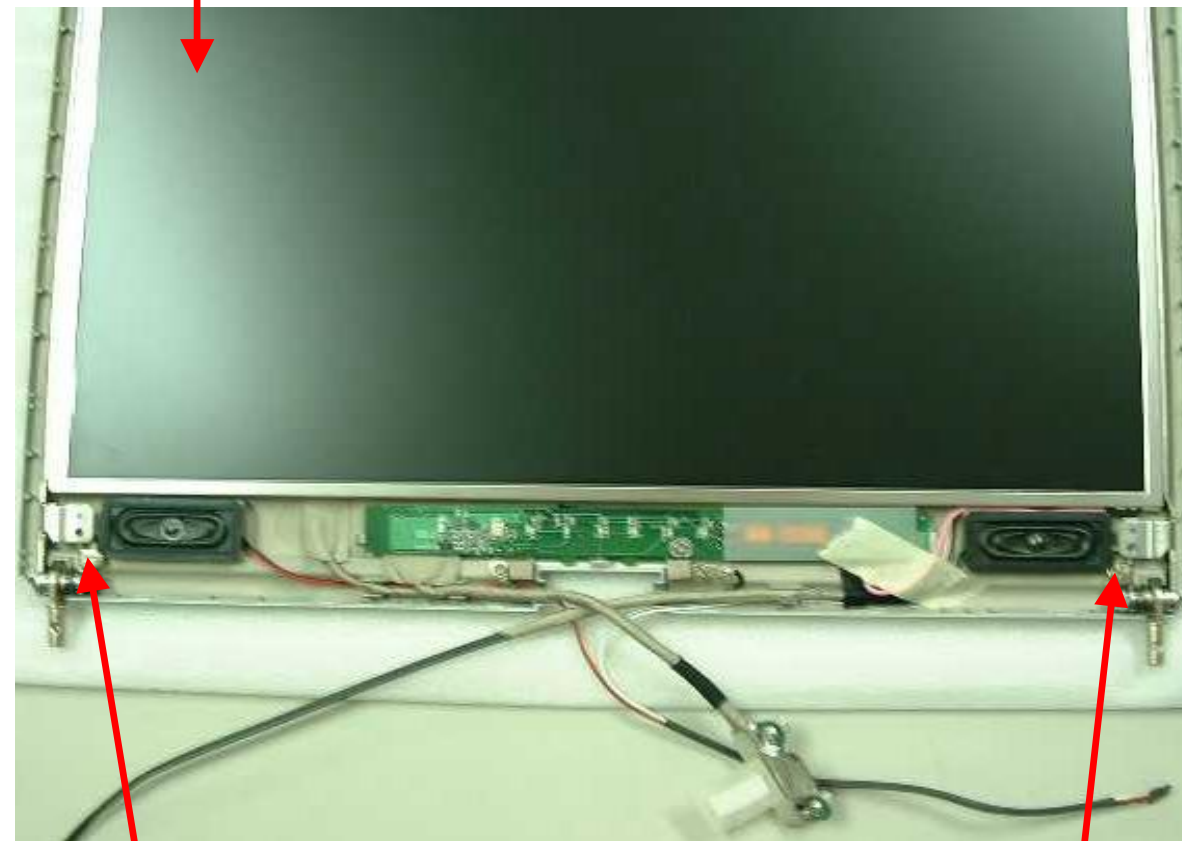
**Issue Date : 02/06/2003**

Page : 04

Dept.: IE Linko Factory I

Model Name			MB02 SERIES	
Station Item			14.1" LCD ASS'Y (4)	
MEMO	LCD PANEL+REAR COVER			
Reference Std. Time			30 sec	
No	Description	P/N	Q'ty	
1	REAR COVER	80-50209-00	1	
2	LCD PANEL	已加工	1	
3	SCREW M2*0.4+3I-NI(NYLOK)	24-10590-01	2	
Fixture	0號電動起子			
Notice	扭力2.0~2.5KG.CM			
Updated Records	VER	Date	Contents	
	A	01/23/2003	第一次發行	
	B	02/06/2003	Update Process	

1&2.將PANEL放置在背蓋上就定位,不可刮傷面板



3-1

3-2

**Approved: Anthony**

**Initial: Wood.H**

ISO Doc. No.: QF8-1N15-04 VER:1

# FIRST INTERNATIONAL COMPUTER, INC.

## WORKING INSTRUCTION

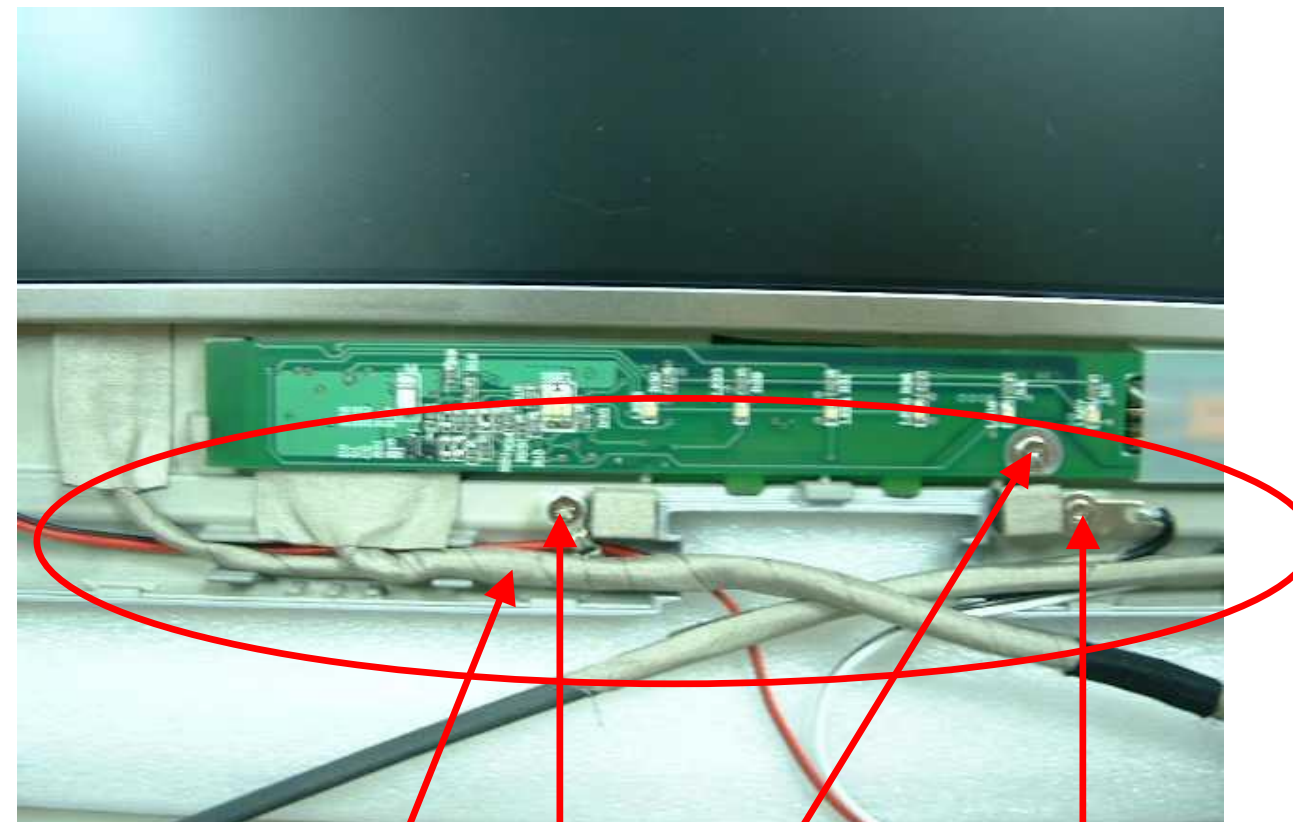
**Issue No. : QP8-1N15-01-13016**

**Issue Date : 02/06/2003**

Page : 05

Dept.: IE Linko Factory I

Model Name			MB02 SERIES		
Station Item			14.1" LCD ASS'Y (5)		
MEMO	LCD PANEL+REAR COVER				
Reference Std. Time			30 sec		
No	Description		P/N	Q'ty	
1	SCREW M2*0.4+3I-NI(NYLOK)		24-10590-01	3	
Fixture	0號電動起子				
Notice	扭力2.0~2.5KG.CM				
Updated Records	VER	Date	Contents		
	A	01/23/2003	第一次發行		
	B	02/06/2003	Update Process		



1-3

1-1

1-2

注意CABLE線放入線槽內,如圖

**Approved: Anthony**

**Initial: Wood.H**

ISO Doc. No.: QF8-1N15-04 VER:1

# FIRST INTERNATIONAL COMPUTER, INC.

## WORKING INSTRUCTION

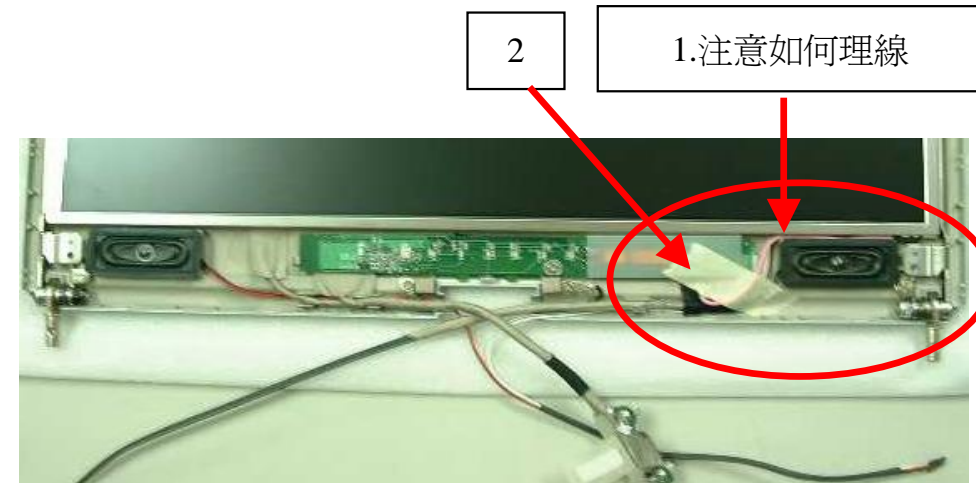
**Issue No. : QP8-1N15-01-13016**

**Issue Date : 02/06/2003**

Page : 06

Dept.: IE Linko Factory I

Model Name			MB02 SERIES	
Station Item			14.1" LCD ASS'Y (6)	
MEMO	INVERTER固定			
Reference Std. Time			30 sec	
No	Description	P/N	Q'ty	
1	注意如何理線	NA	NA	
2	TAPE 2.5~3.0 cm	FIC提供	1	
Fixture				
Notice				
Updated Records	VER	Date	Contents	
	A	01/23/2003	第一次發行	
	B	02/06/2003	Update Process	



**Approved: Anthony**

**Initial: Wood.H**

ISO Doc. No.: QF8-1N15-04 VER:1

## 検査SCREW

検査TAPE

檢查有無刮傷

## 検査理線

# FIRST INTERNATIONAL COMPUTER, INC.

## WORKING INSTRUCTION

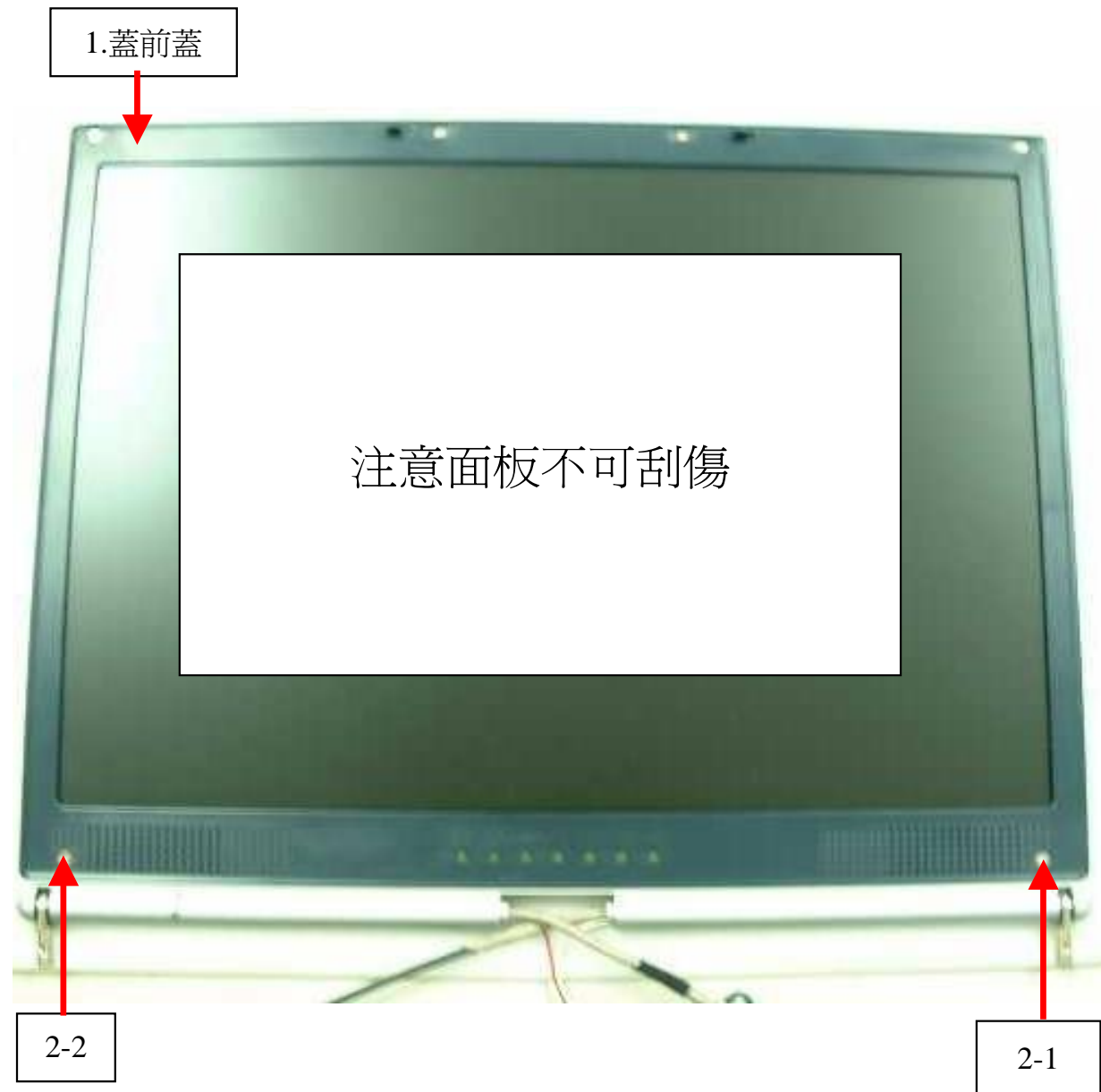
**Issue No. : QP8-1N15-01-13016**

**Issue Date : 02/06/2003**

Page : 07

Dept.: IE Linko Factory I

Model Name			MB02 SERIES		
Station Item			14.1" LCD ASS'Y (7)		
MEMO	INSPECTION & LCD前蓋組裝				
Reference Std. Time			30 sec		
No	Description		P/N		Q'ty
1	FRONT COVER		80-40759-00		1
2	SCREW M2.5*0.45+4I-NI(NYLOK)		24-10720-00		2
Fixture					
	1號電動起子(鎖NO.2)				
Notice					
	NO.2:扭力2.5~3.0KG.CM				
Updated Records	VER	Date		Contents	
	A	01/23/2003		第一次發行	
	B	02/06/2003		Update Process	



**Approved: Anthony**

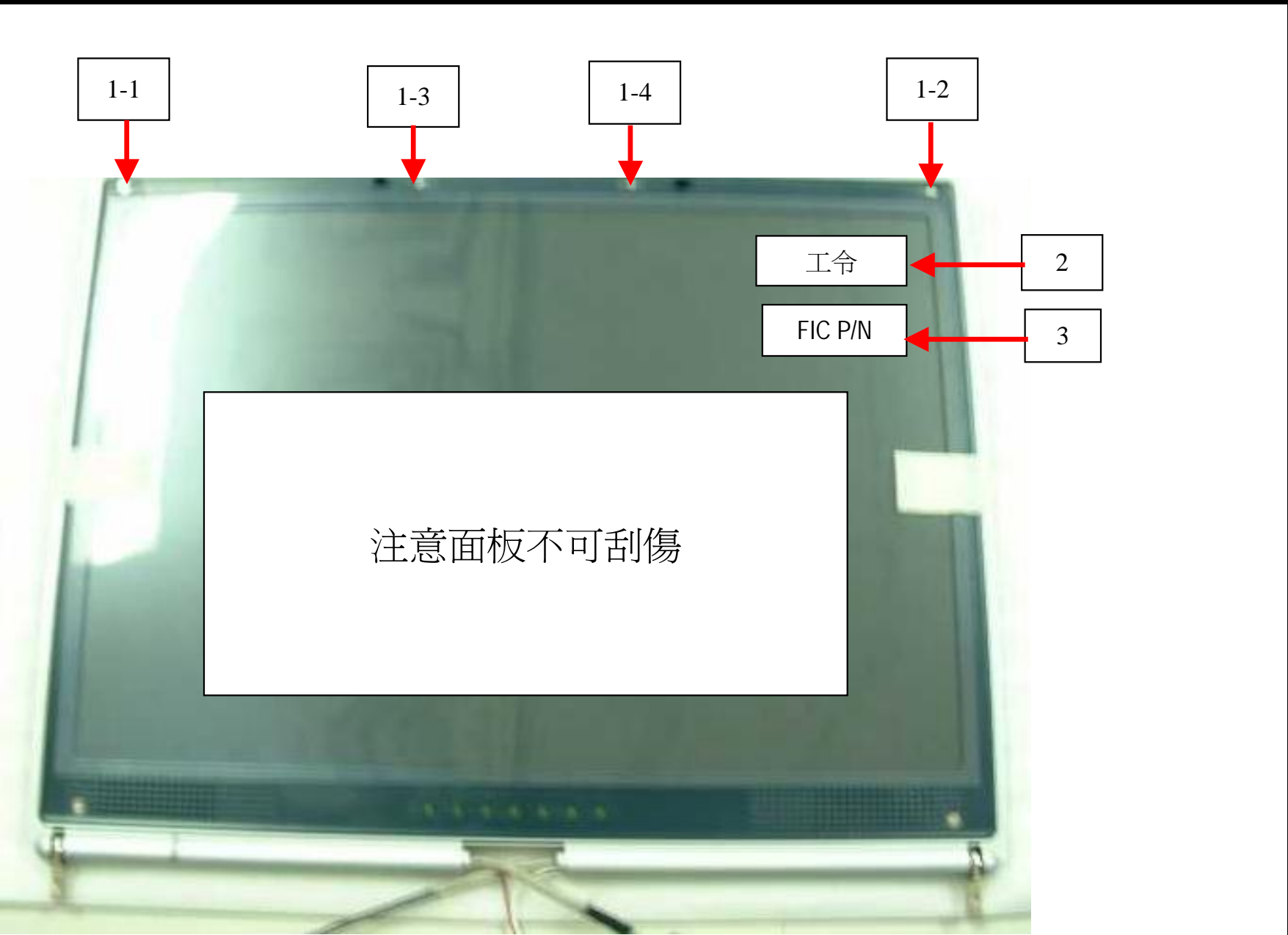
**Initial: Wood.H**

ISO Doc. No.: QF8-1N15-04 VER:1



FIRST INTERNATIONAL COMPUTER, INC.  
WORKING INSTRUCTION

Model Name		MB02 SERIES	
Station Item		14.1" LCD ASS'Y (8)	
MEMO	鎖LCD前蓋螺絲		
Reference Std. Time		30	sec
No	Description	P/N	Q'ty
1	SCREW M2*0.4+3I-NI(NYLOK)	24-10590-01	4
2	FIC 工令LABEL	FIC提供	1
3	FIC P/N LABEL	FIC提供	1
Fixture	00號電動起子(鎖NO.1)		
Notice	NO.1:扭力2.0~2.5KG.CM		
Updated Records	VER	Date	Contents
	A	01/23/2003	第一次發行
	B	02/06/2003	Update Process



# FIRST INTERNATIONAL COMPUTER, INC.

## WORKING INSTRUCTION

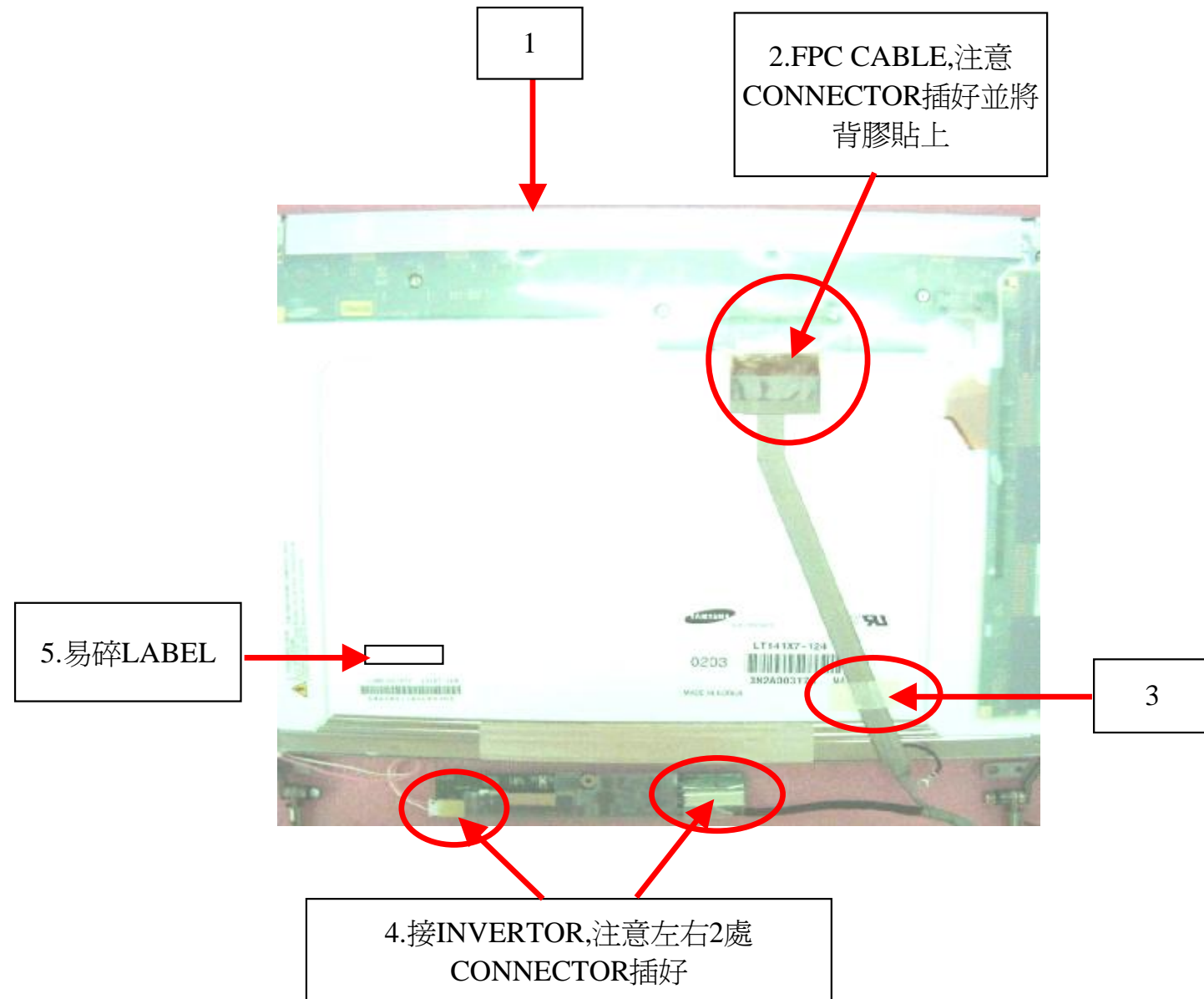
**Issue No. : QP8-1N15-01-13016**

**Issue Date : 01/23/2002**

Page : 02

Dept.: IE Linko Factory I

Model Name			MB02 SERIES	
Station Item			14" LCD ASS'Y (2)	
MEMO	LCD PANEL			
Reference Std. Time			30 sec	
No	Description	P/N	Q'ty	
1	14.1" LCD AU B141XN04 V2.5XXX	71-10629-01	1	
2	14.1" COAXIAL CABLE AU B141XN04	22-11101-00	1	
	14.1" COAXIAL CABLE CMO N141X7-L03	22-11102-00	1	
	14.1" COAXIAL CABLE HSD 141PX13-A	22-11104-00	1	
			1	
3	PAPER TAPE 3.5~4.5 CM	FIC 提供	1	
4	INVERTER T90I056.00 AMBIT	12-01573-01	1	
	INVERTER IV14149/T SUMIDA	12-01573-02	1	
5	易碎LABEL	FIC提供	1	
Fixture	00號電動起子			
Notice	扭力2.0~2.5KG.CM			
Updated Records	VER	Date	Contents	
	A	01/23/2003	第一次發行	



**Approved: Anthony**

**Initial: Wood.H**

ISO Doc. No.: QF8-1N15-04 VER:1

# FIRST INTERNATIONAL COMPUTER, INC.

## WORKING INSTRUCTION

**Issue No. : QP8-1N15-01-13016**

**Issue Date : 01/23/2002**

Page : 03

Dept.: IE Linko Factory I

Model Name		MB02 SERIES	
Station Item		14.1" LCD ASS'Y (3)	
MEMO	LCD PANEL+HINGE BRACKET		
Reference Std. Time		30	sec
No	Description	P/N	Q'ty
1	HINGE-L(AU B141XN04)	24-84143-00	1
	HINGE-R(AU B141XN04)	24-84142-00	1
	HINGE-L(CMO N141X7-L03)	24-84145-00	1
	HINGE-R(CMO N141X7-L03)	24-84144-00	1
	HINGE-L(HSD 141PX13-A)	24-84153-00	1
	HINGE-R(HSD 141PX13-A)	24-84151-00	1
2	SCREW M2*0.4+3I-NI(NYLOK)	24-10590-01	4
Fixture	00號電動起子		
Notice	扭力2.0~2.5KG.CM		
Updated Records	VER	Date	Contents
	A	01/23/2003	第一次發行



2-1



1-L

2-2



2-3



1-R

2-4

**Approved: Anthony**

**Initial: Wood.H**

ISO Doc. No.: QF8-1N15-04 VER:1

# FIRST INTERNATIONAL COMPUTER, INC.

## WORKING INSTRUCTION

**Issue No. : QP8-1N15-01-13016**

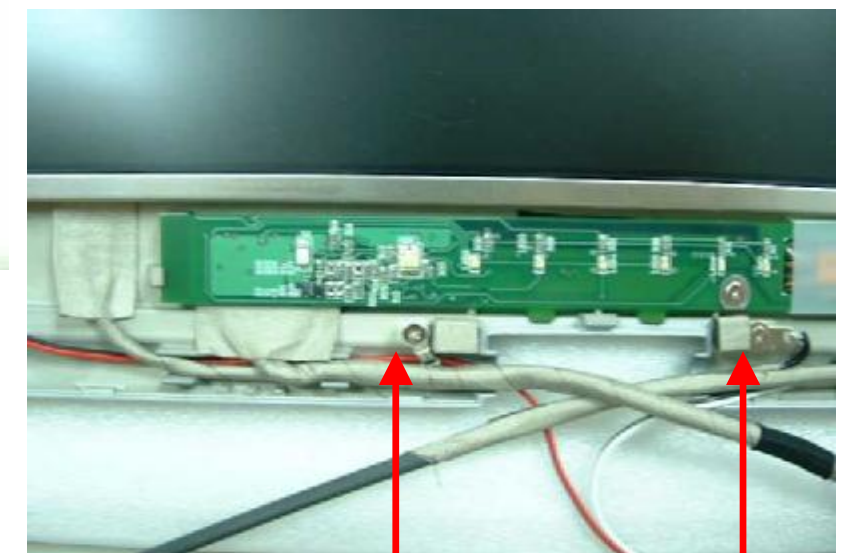
**Issue Date : 01/23/2002**

Page : 04

Dept.: IE Linko Factory I

Model Name			MB02 SERIES	
Station Item			14.1" LCD ASS'Y (4)	
MEMO	LCD PANEL+SPEAKER+REAR COVER			
Reference Std. Time			30 sec	
No	Description		P/N	Q'ty
1	REAR COVER		80-50209-00	1
2	LCD PANEL		已加工	1
3	SCREW M2*0.4+3I-NI(NYLOK)		24-10590-01	2
Fixture	0號電動起子			
Notice	扭力2.0~2.5KG.CM			
Updated Records	VER	Date	Contents	
	A	01/23/2003	第一次發行	

1&2.將PANEL放置在背蓋上就定位



3-1

3-2

**Approved: Anthony**

**Initial: Wood.H**

ISO Doc. No.: QF8-1N15-04 VER:1



# FIRST INTERNATIONAL COMPUTER, INC.

## WORKING INSTRUCTION

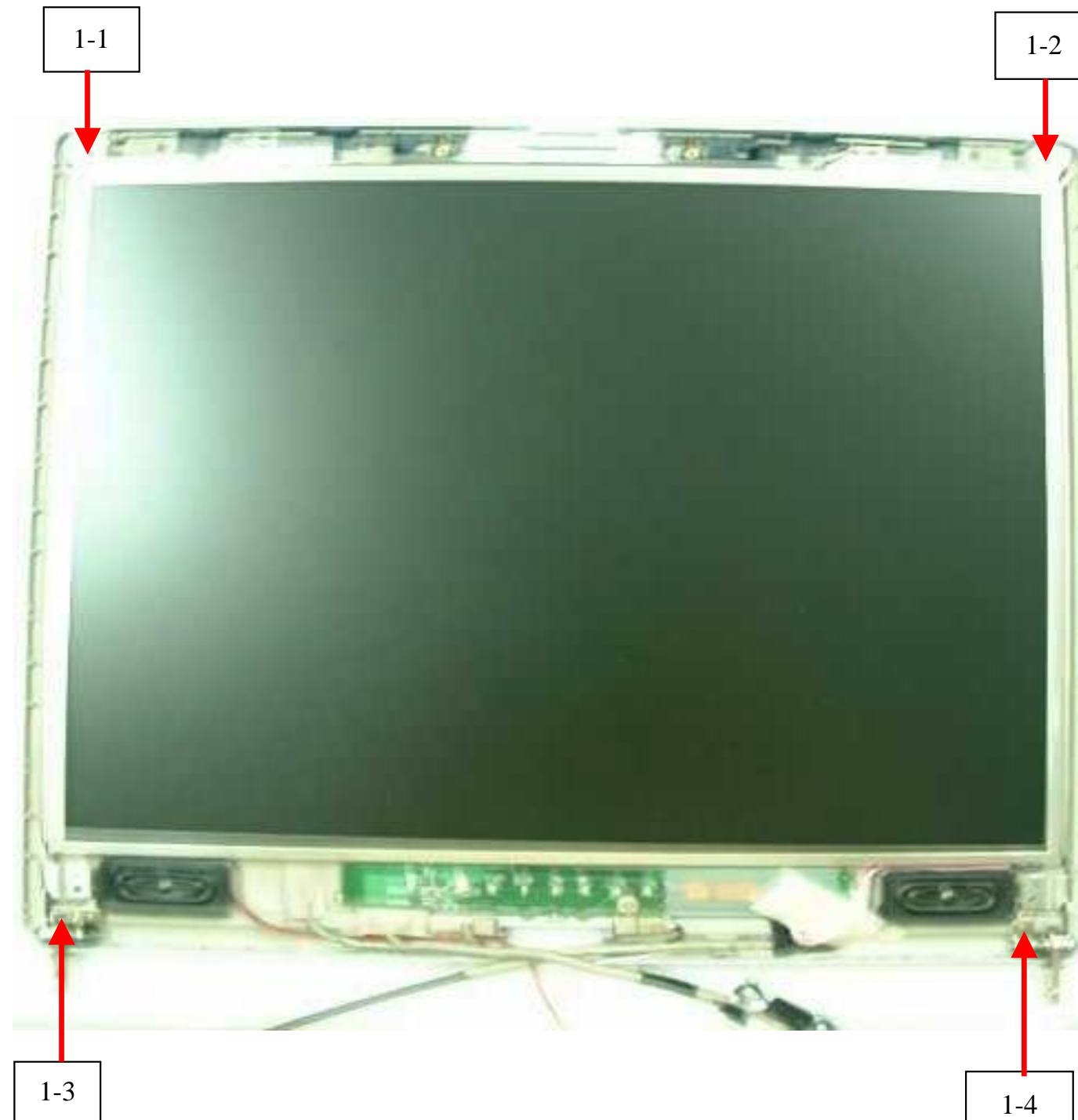
**Issue No. : QP8-1N15-01-13016**

**Issue Date : 01/23/2002**

Page : 05

Dept.: IE Linko Factory I

Model Name			MB02 SERIES		
Station Item			14.1" LCD ASS'Y (5)		
MEMO	LCD PANEL+REAR COVER				
Reference Std. Time			30 sec		
No	Description		P/N	Q'ty	
1	SCREW M2*0.4+3I-NI(NYLOK)		24-10590-01	4	
Fixture	0號電動起子				
Notice	扭力2.0~2.5KG.CM				
Updated Records	VER	Date	Contents		
	A	01/23/2003	第一次發行		



**Approved: Anthony**

**Initial: Wood.H**

ISO Doc. No.: QF8-1N15-04 VER:1

# FIRST INTERNATIONAL COMPUTER, INC.

## WORKING INSTRUCTION

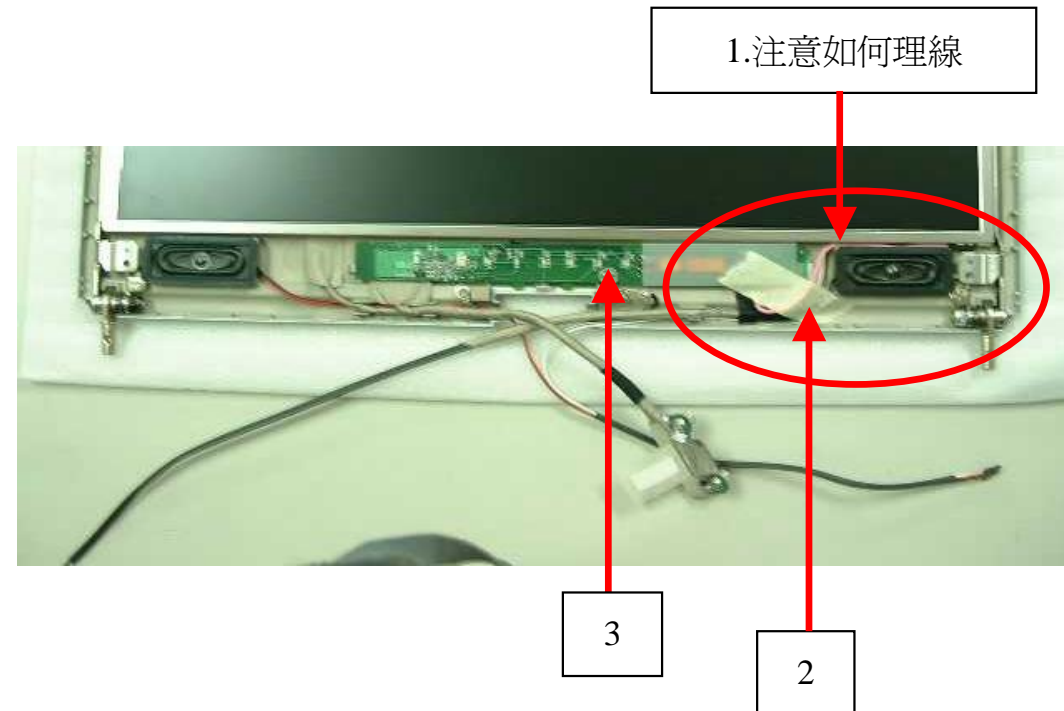
**Issue No. : QP8-1N15-01-13016**

**Issue Date : 01/23/2002**

Page : 06

Dept.: IE Linko Factory I

Model Name			MB02 SERIES		
Station Item			14.1" LCD ASS'Y (6)		
MEMO	INVERTER固定				
Reference Std. Time			30 sec		
No	Description	P/N	Q'ty		
1	注意如何理線	NA	1		
2	TAPE	FIC提供	1		
3	SCREW M2*0.4+3I-NI(NYLOK)	24-10590-01	1		
Fixture	0號電動起子				
Notice	扭力:2.0~2.5KGCM				
Updated Records	VER	Date	Contents		
	A	01/23/2003	第一次發行		



**Approved: Anthony**

**Initial: Wood.H**

ISO Doc. No.: QF8-1N15-04 VER:1

# FIRST INTERNATIONAL COMPUTER, INC.

## WORKING INSTRUCTION

**Issue No. : QP8-1N15-01-13016**

**Issue Date : 01/23/2002**

Page : 07

Dept.: IE Linko Factory I

Model Name			MB02 SERIES		
Station Item			14.1" LCD ASS'Y (7)		
MEMO		INSPECTION & LCD前蓋組裝			
Reference Std. Time			30 sec		
No	Description		P/N	Q'ty	
1	FRONT COVER		80-40759-00	1	
2	FIC 工令LABEL		FIC提供	1	
3	FIC P/N LABEL		FIC提供	1	
Fixture					
Notice					
Updated Records	VER	Date	Contents		
	A	01/23/2003	第一次發行		

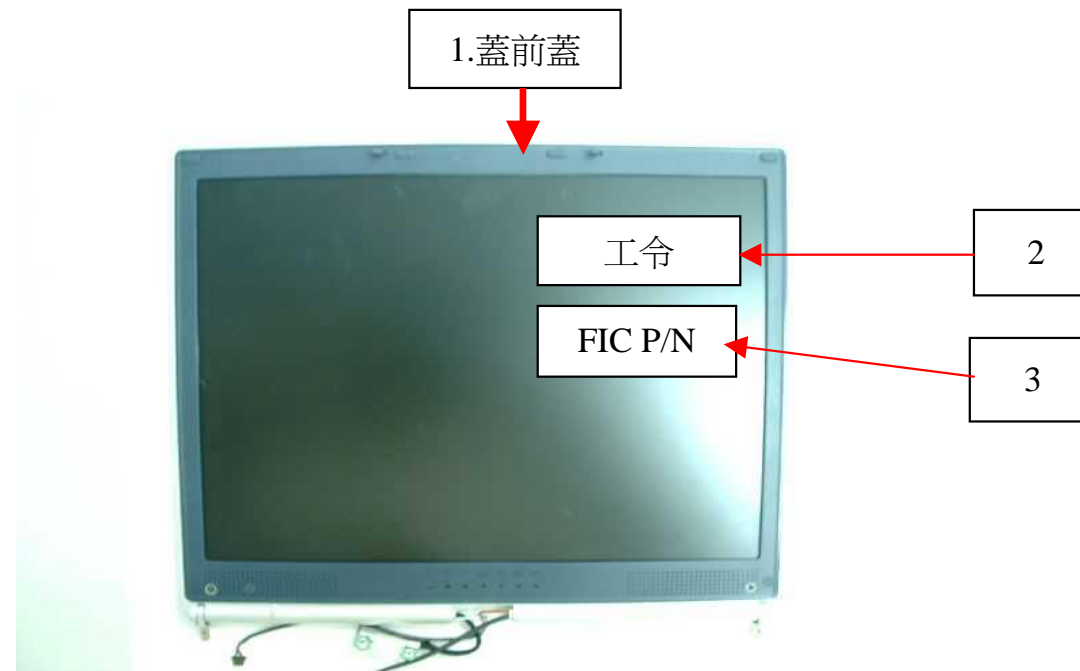


## 検査理線

## 検査SCREW

## 検査TAPE

檢查有無刮傷



**Approved: Anthony**

**Initial: Wood.H**

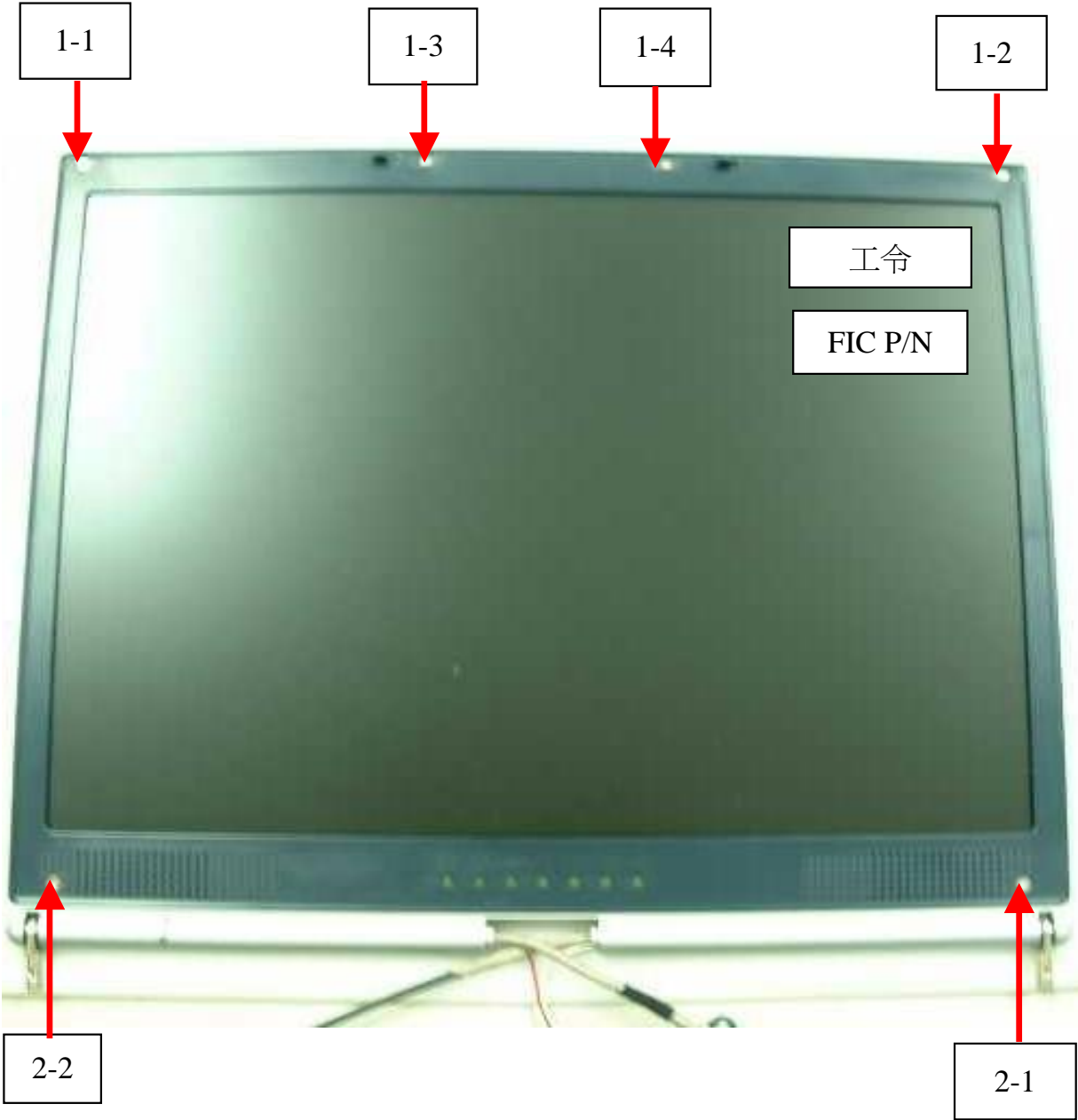
ISO Doc. No.: QF8-1N15-04 VER:1

FIRST INTERNATIONAL COMPUTER, INC.  
WORKING INSTRUCTION

Issue No. : QP8-1N15-01-13016  
Issue Date : 01/23/2002

Page : 08  
Dept.: IE Linko Factory I

Model Name		MB02 SERIES	
Station Item		14.1" LCD ASS'Y (8)	
MEMO	鎖LCD前蓋螺絲		
Reference Std. Time		30	sec
No	Description	P/N	Q'ty
1	SCREW M2*0.4+3I-NI(NYLOK)	24-10590-01	4
2	SCREW M2.5*0.45+4I-NI(NYLOK)	24-10720-00	2
Fixture	00號電動起子(鎖NO.1)		
	1號電動起子(鎖NO.2)		
Notice	NO.1:扭力2.0~2.5KG.CM		
	NO.2:扭力2.5~3.0KG.CM		
Updated Records	VER	Date	Contents
	A	01/23/2003	第一次發行



Approved: Anthony Initial: Wood.H ISO Doc. No.: QF8-1N15-04 VER:1



# FIRST INTERNATIONAL COMPUTER, INC.

## WORKING INSTRUCTION

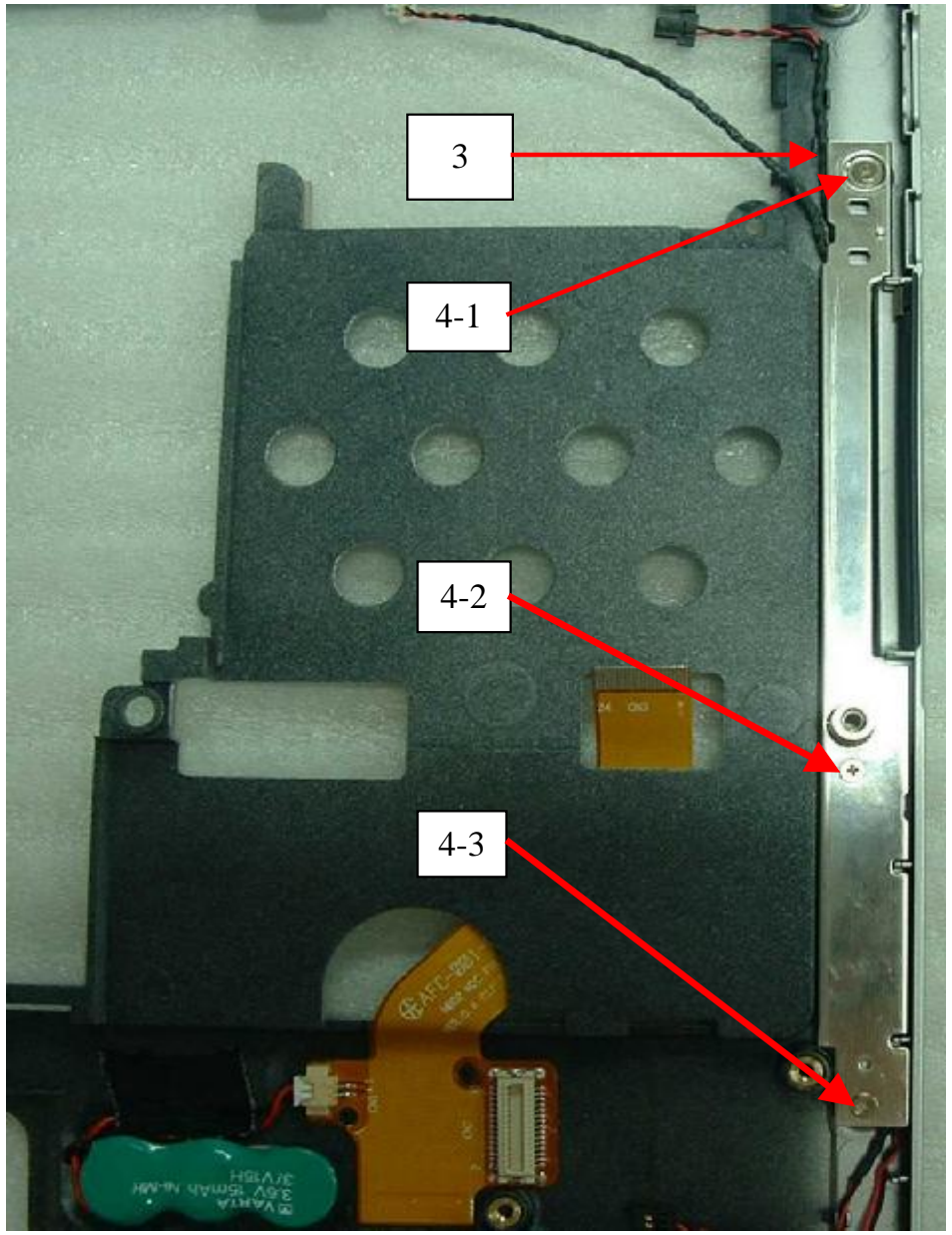
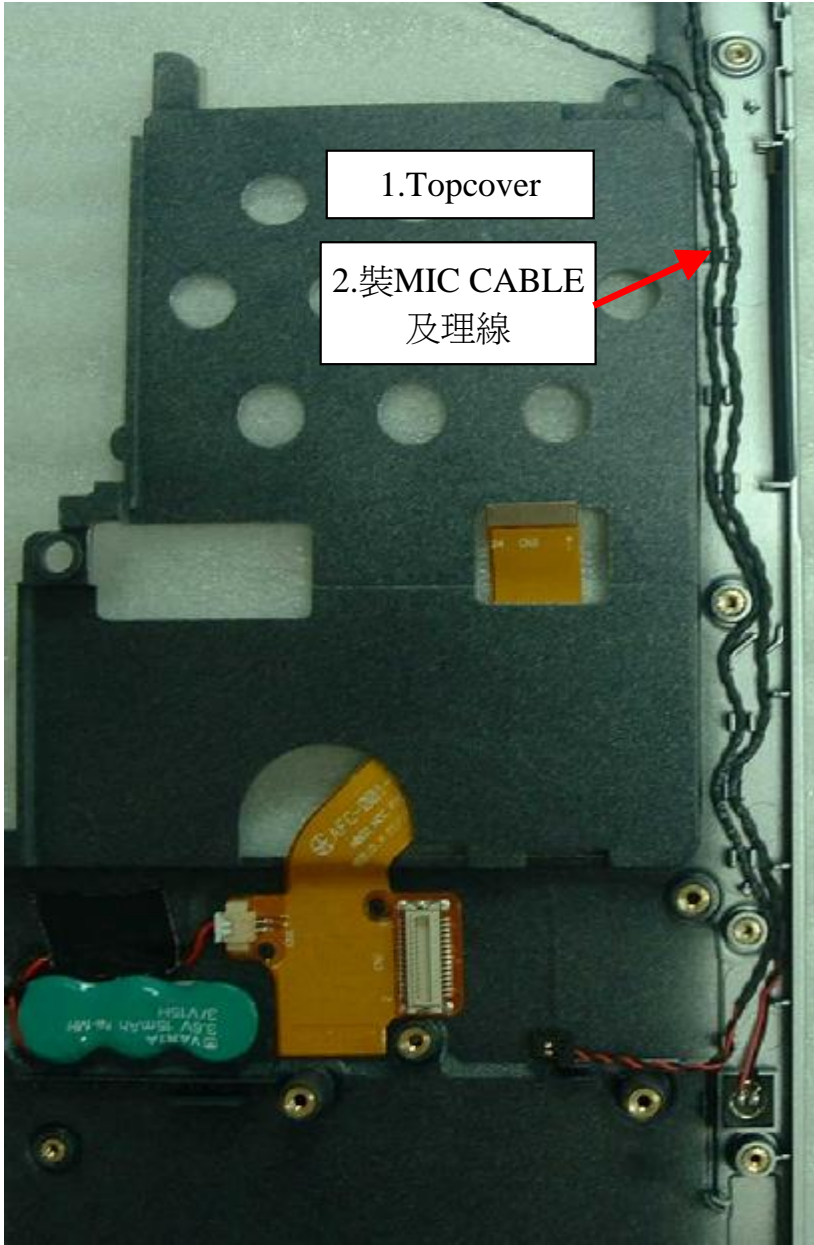
**Issue No. : QP8-1N15-01-13015**

**Issue Date : 01/23/2003**

Page : 01

**Dept.: IE Linko Factory I**

Model Name		MB02 Series	
Station Item		Top cover(1)	
MEMO	Top cover pre-ass'y(1)		
Reference Std. Time		50	sec
No	Description	P/N	Q'ty
1	TOP CASE	80-40757-00	1
2	MIC CABLE MODULE	21-20762-00	1
3	BRACKET	24-52109-00	1
4	SCREW M2*0.4+3I-NI(NYLOK)	24-10590-01	3
Fixture	0號電動起子		
Notice	扭力:2.0~2.5KGCM		
Updated Records	VER	Date	Contents
	A	01/23/2003	第一次發行



**Approved: Anthony**

Initial: Wood.H

**ISO Doc. No.: QF8-1N15-04 VER:1**

# FIRST INTERNATIONAL COMPUTER, INC.

## WORKING INSTRUCTION

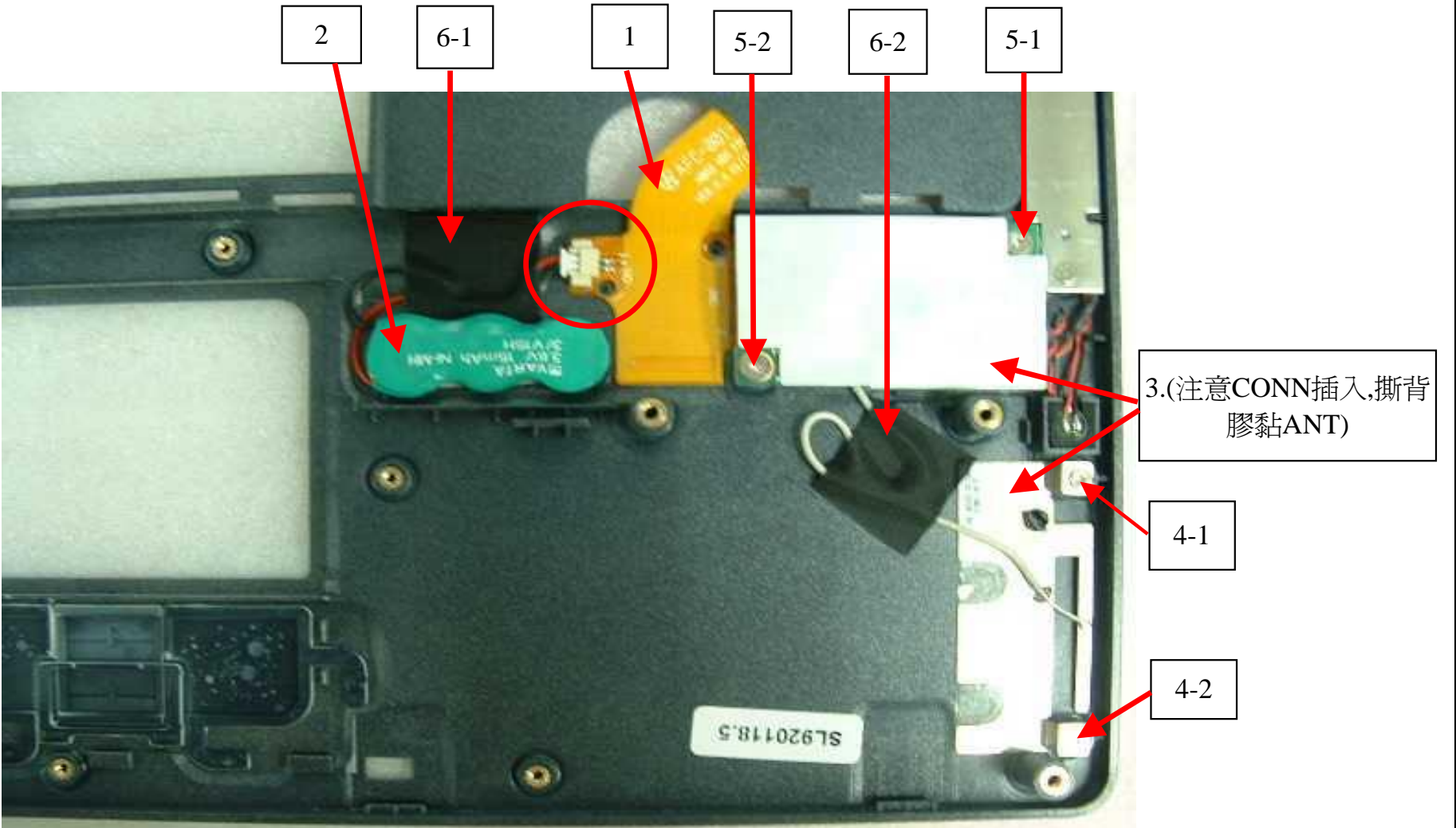
**Issue No. : QP8-1N15-01-13015**

**Issue Date : 02/06/2003**

Page : 02

**Dept.: IE Linko Factory I**

Model Name		MB02 Series	
Station Item		Top cover(2)	
MEMO	Top cover pre-ass'y(2)		
Reference Std. Time		50	sec
No	Description	P/N	Q'ty
1	FPC MDC Bluetooth	22-21298-00	1
2	RTC BATT.	21-92146-00	1
3	BLUETOOTH ANTENNA	21-92149-01	1
4	SCREW M2*0.4+3I-NI(NYLOK)	24-10590-01	2
5	SCREW M2.5*0.45+3I-NI(NYLOK)	24-10416-01	2
6	TAPE 1.5~2.0CM	FIC提供	2
Fixture	0號電動起子		
Notice	扭力:2.0~2.5KGCM		
Updated Records	VER	Date	Contents
	A	01/23/2003	第一次發行
	B	02/06/2003	Add Tape



**Approved: Anthony**

**Initial: Wood.H**

**ISO Doc. No.: QF8-1N15-04 VER:1**



# FIRST INTERNATIONAL COMPUTER, INC.

## WORKING INSTRUCTION

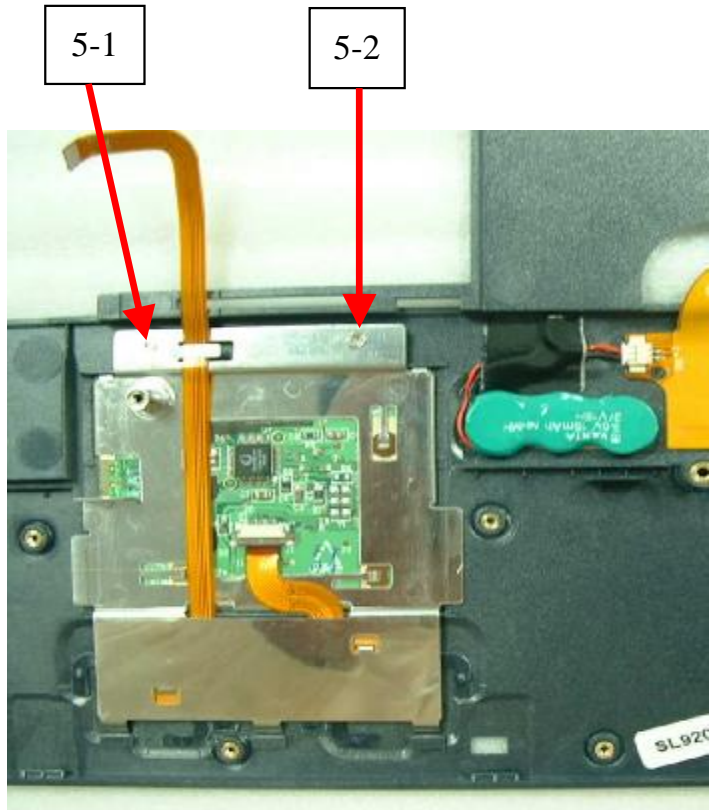
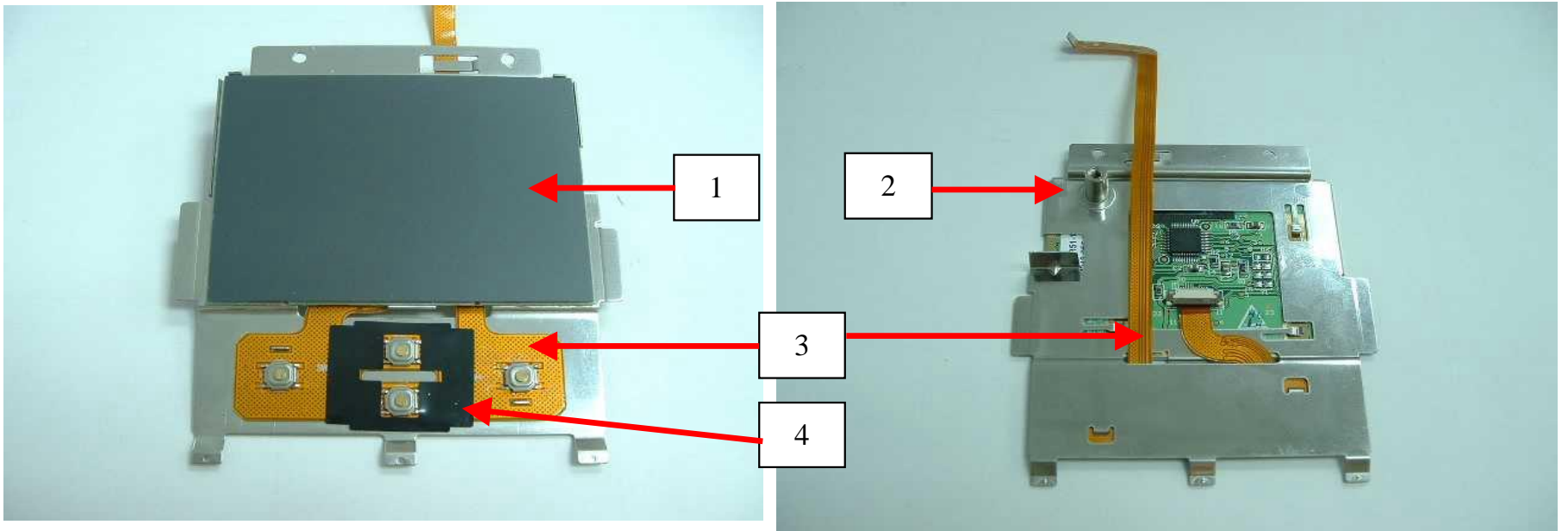
**Issue No. : QP8-1N15-01-13015**

**Issue Date : 02/06/2003**

Page : 03

**Dept.: IE Linko Factory I**

Model Name		MB02 Series	
Station Item		Top cover(3)	
MEMO	Top cover pre-ass'y(3)		
Reference Std. Time		50	sec
No	Description	P/N	Q'ty
1	G/P TM41PDG351-1 SYNAPTICS	71-20186-00	1
2	G/P PLATE	80-50217-00	1
3	G/P BUTTON FPC	22-21296-00	1
4	MYLAR		1
5	SCREW M2*0.4+3I-NI(NYLOK)	24-10590-01	2
Fixture	0號電動起子		
Notice	扭力:2.0~2.5KGCM		
Updated Records	VER	Date	Contents
	A	01/23/2003	第一次發行
	B	02/06/2003	Update Picture



ASE

**Approved: Anthony**

**Initial: Wood.H**

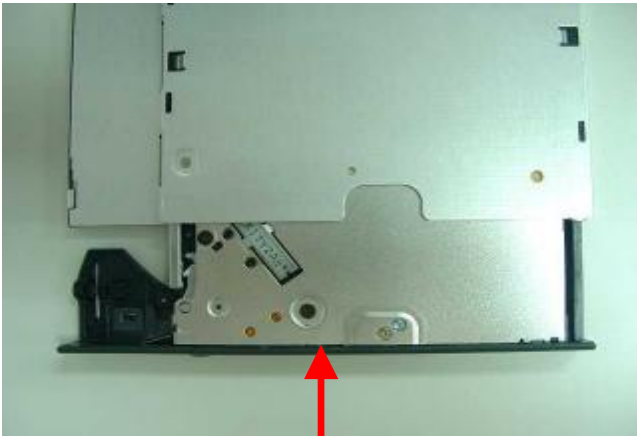
**ISO Doc. No.: QF8-1N15-04 VER:1**

FIRST INTERNATIONAL COMPUTER, INC.  
WORKING INSTRUCTION

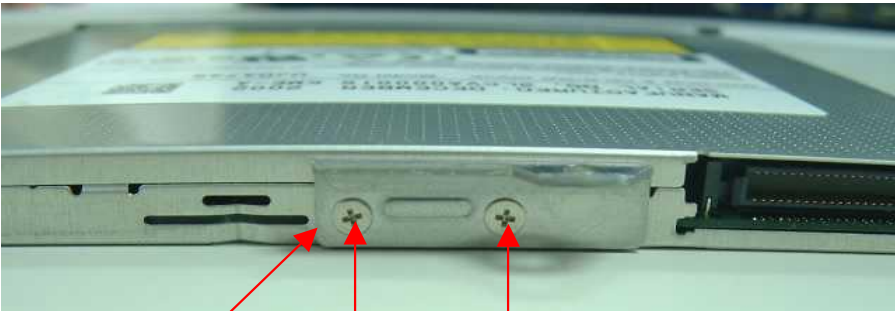
Issue No. : QP8-1N15-01-13015  
Issue Date : 01/23/2003

Page : 04  
Dept.: IE Linko Factory I

Model Name		MB02 Series	
Station Item		COMBO MODULE	
MEMO	COMBO MODULE		
Reference Std. Time		40	sec
No	Description	P/N	Q'ty
1	COMBO UJDA745 KME	23-40487-00	1
2	PANEL KME UJDA745	80-40758-00	1
3	BRACKET(PLATE)	24-52173-00	1
4	SCREW M2*0.4+3I-NI(NYLOK)	24-10590-01	2
5	FIC易碎	FIC提供	1
6	FIC P/N BARCODE	FIC提供	1
Fixture	0號電動起子		
Notice	扭力:2.0~2.5KGCM		
Updated Records	VER	Date	Contents
	A	01/23/2003	第一次發行



1&2



3

4-2

4-1



6(FIC P/N)

5(易碎)

Approved: Anthony

Initial: Wood.H

ISO Doc. No.: QF8-1N15-04 VER:1



# FIRST INTERNATIONAL COMPUTER, INC.

## WORKING INSTRUCTION

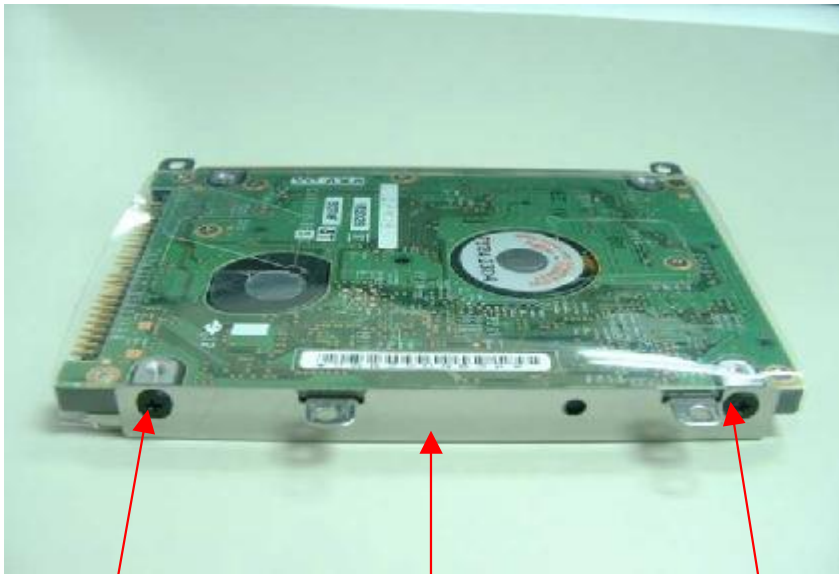
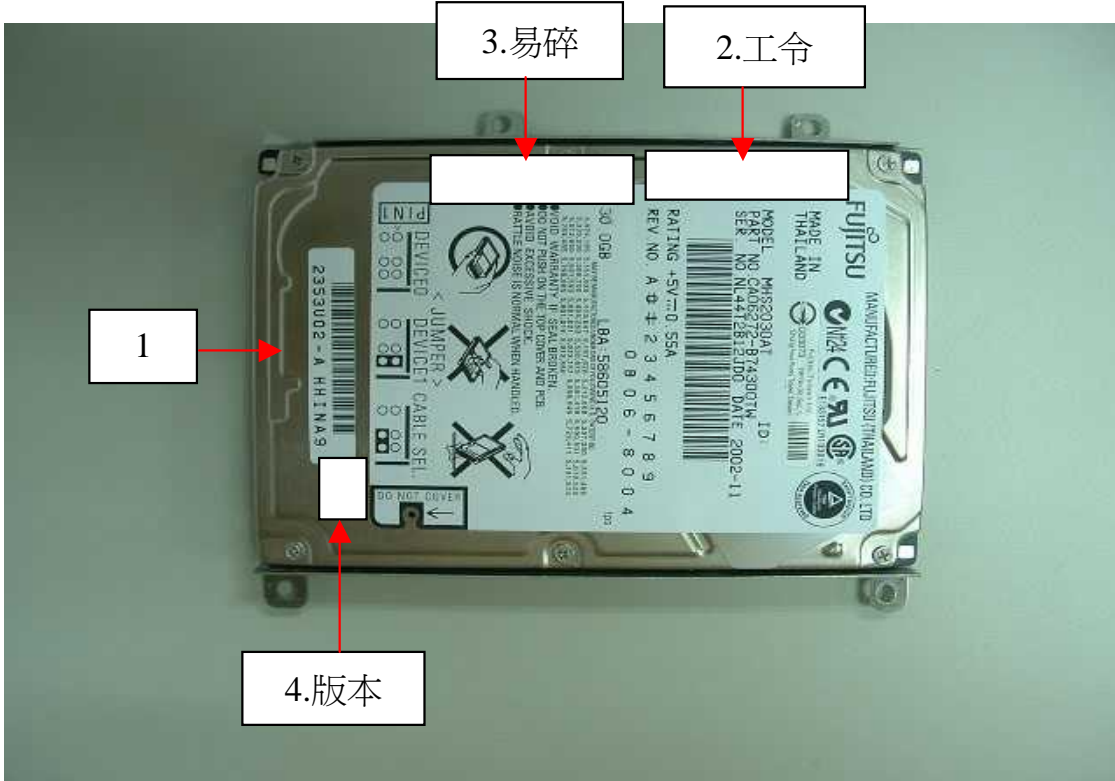
**Issue No. : QP8-1N15-01-13015**

**Issue Date : 01/23/2003**

**Page : 05**

**Dept.: IE Linko Factory I**

Model Name		MB02 Series	
Station Item		HDD	
MEMO	HDD MODULE ASS'Y		
Reference Std. Time		45	sec
No	Description	P/N	Q'ty
1	HDD 30G FUJ MHS2030AT	23-20754-06	1
2	工令 LABEL	FIC提供	1
3	易碎 LABEL	FIC提供	1
4	版本 LABEL	FIC提供	1
5	BRACKET-R	24-52171-00	1
	BRACKET-L	24-52170-00	1
6	SCREW M3*0.5+3I-BNI	24-10524-00	4
7	MYLAR	24-84156-00	1
Fixture	1號電動起子		
Notice	扭力:2.5~3.0KGCM		
Updated Records	VER	Date	Contents
	A	01/23/2003	第一次發行



**Approved: Anthony**

Initial: Wood.H

**ISO Doc. No.: QF8-1N15-04 VER:1**

# FIRST INTERNATIONAL COMPUTER, INC.

## WORKING INSTRUCTION

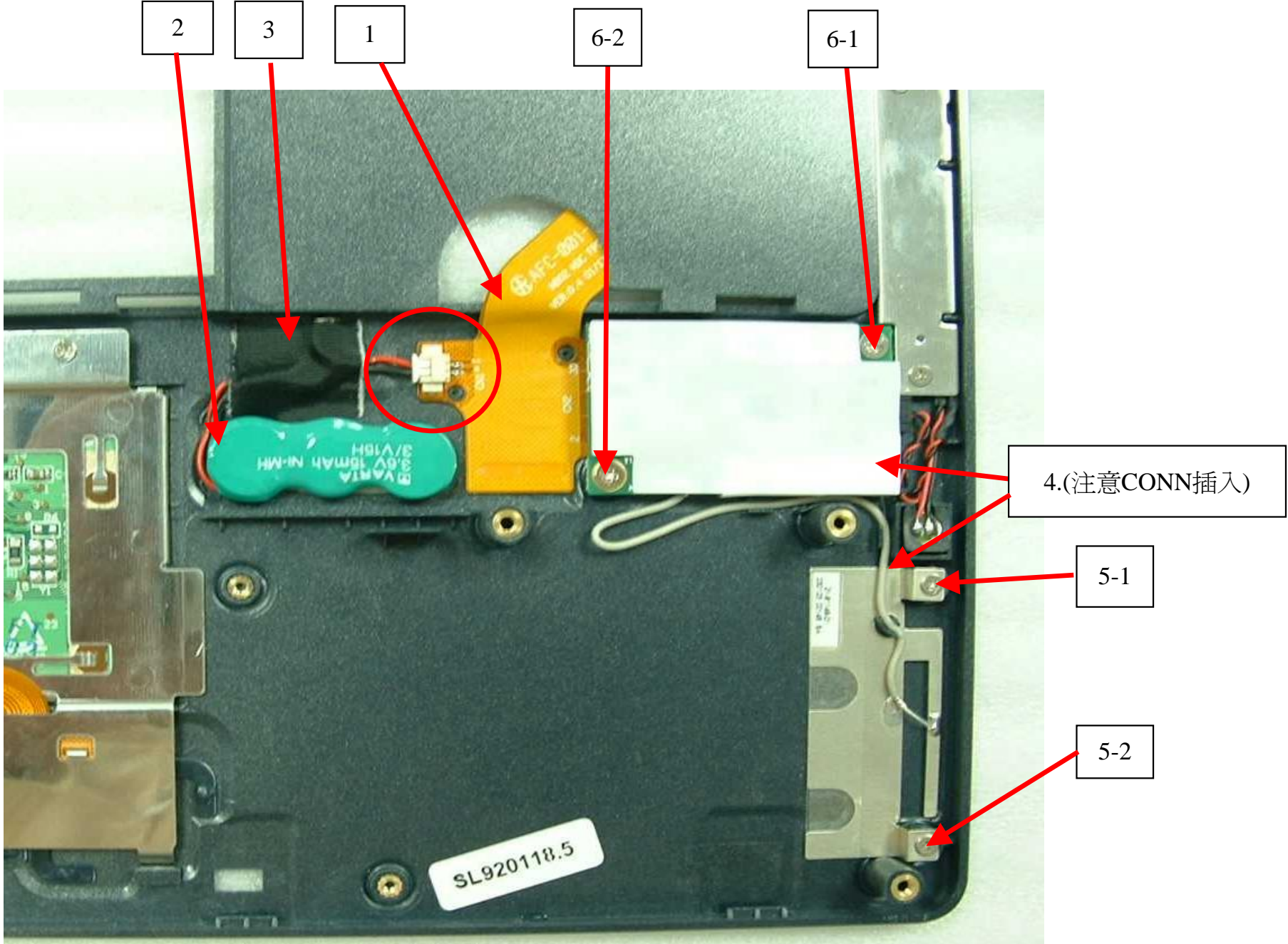
**Issue No. : QP8-1N15-01-13015**

**Issue Date : 01/23/2003**

Page : 02

**Dept.: IE Linko Factory I**

Model Name		MB02 Series	
Station Item		Top cover(2)	
MEMO	Top cover pre-ass'y(2)		
Reference Std. Time		50	sec
No	Description	P/N	Q'ty
1	FPC MDC Bluetooth	22-21298-00	1
2	RTC BATT.	21-92146-00	1
3	TAPE 1.5~2.0CM	FIC提供	1
4	BLUETOOTH ANTENNA	21-92149-01	1
5	SCREW M2*0.4+3I-NI(NYLOK)	24-10590-01	2
6	SCREW M2.5*0.45+3I-NI(NYLOK)	24-10416-01	2
Fixture	0號電動起子		
Notice	扭力:2.0~2.5KGCM		
Updated Records	VER	Date	Contents
	A	01/23/2003	第一次發行



**Approved: Anthony**

Initial: Wood.H

**ISO Doc. No.: QF8-1N15-04 VER:1**



# FIRST INTERNATIONAL COMPUTER, INC.

## WORKING INSTRUCTION

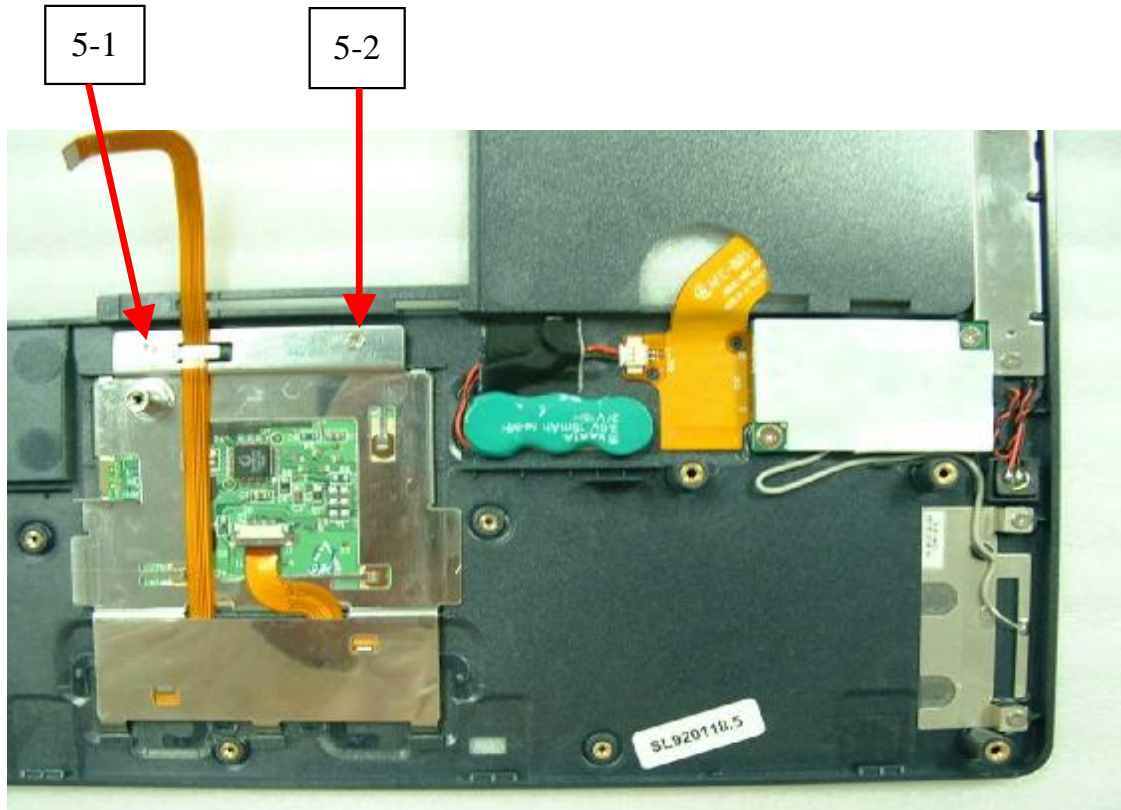
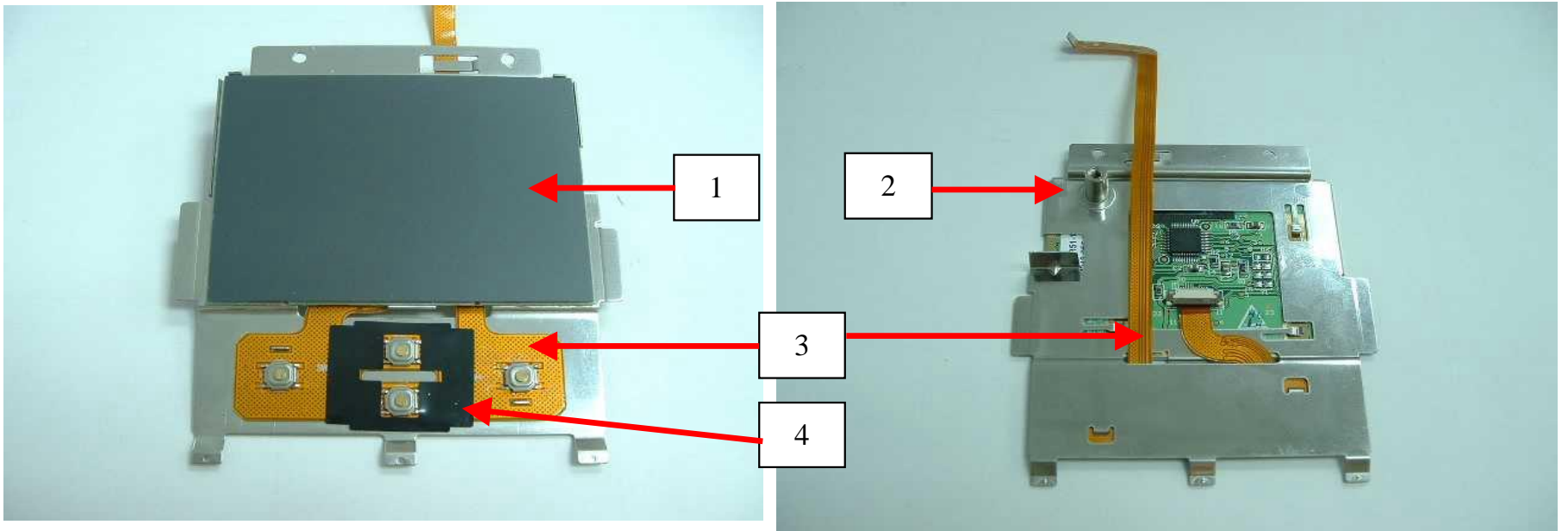
**Issue No. : QP8-1N15-01-13015**

**Issue Date : 01/23/2003**

Page : 03

**Dept.: IE Linko Factory I**

Model Name		MB02 Series	
Station Item		Top cover(3)	
MEMO	Top cover pre-ass'y(3)		
Reference Std. Time		50	sec
No	Description	P/N	Q'ty
1	G/P TM41PDG351-1 SYNAPTICS	71-20186-00	1
2	G/P PLATE	80-50217-00	1
3	G/P BUTTON FPC	22-21296-00	1
4	MYLAR		1
5	SCREW M2*0.4+3I-NI(NYLOK)	24-10590-01	2
Fixture	0號電動起子		
Notice	扭力:2.0~2.5KGCM		
Updated Records	VER	Date	Contents
	A	01/23/2003	第一次發行



**Approved: Anthony**

Initial: Wood.H

**ISO Doc. No.: QF8-1N15-04 VER:1**

# FIRST INTERNATIONAL COMPUTER, INC.

## WORKING INSTRUCTION

**Issue No. : QP8-1N15-01-13014**

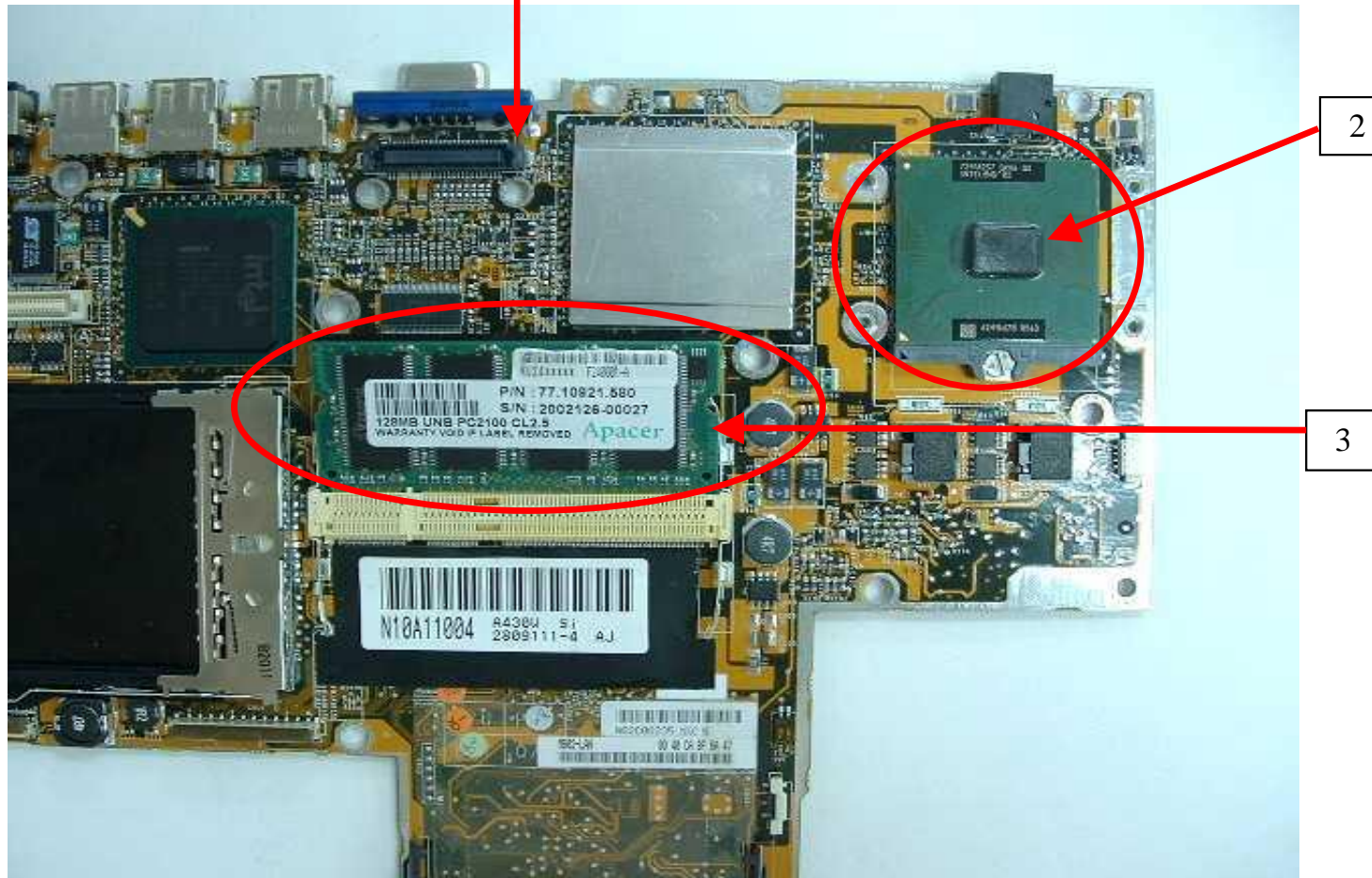
**Issue Date : 01/23/2003**

Page : 01

**Dept.: IE Linko Factory I**

<b>Model Name</b>			MB02 Series		
<b>Station Item</b>			Install CPU & RAM		
<b>MEMO</b>	Install CPU & RAM				
<b>Reference Std. Time</b>			30 sec		
<b>No</b>	<b>Description</b>		<b>P/N</b>	<b>Q'ty</b>	
1	M/B		51-71496-XX	1	
	M/B(2ND SOURCE)		51-71496DXX	1	
	(請參考EE提供之對照表,並依據工令及訂單領用)				
	檢查無誤後再依EE發行之JUMPER SETTING調整)				
2	CPU BANIAS MOBILE 1.4G		01-10967-01	1	
3	DDR 128MB Apacer		02-33028-02	1	
<b>Fixture</b>					
<b>Notice</b>					
<b>Updated Records</b>	<b>VER</b>	<b>Date</b>	<b>Contents</b>		
	A	01/23/2003	1st Edit		

1.M/B(注意:檢查無誤後再依EE發行之JUMPER SETTING調整)



**Approved: Anthony**

**Initial: Wood.H**

ISO Doc. No.: QF8-1N15-04 VER:1



# FIRST INTERNATIONAL COMPUTER, INC.

## WORKING INSTRUCTION

**Issue No. : QP8-1N15-01-13014**

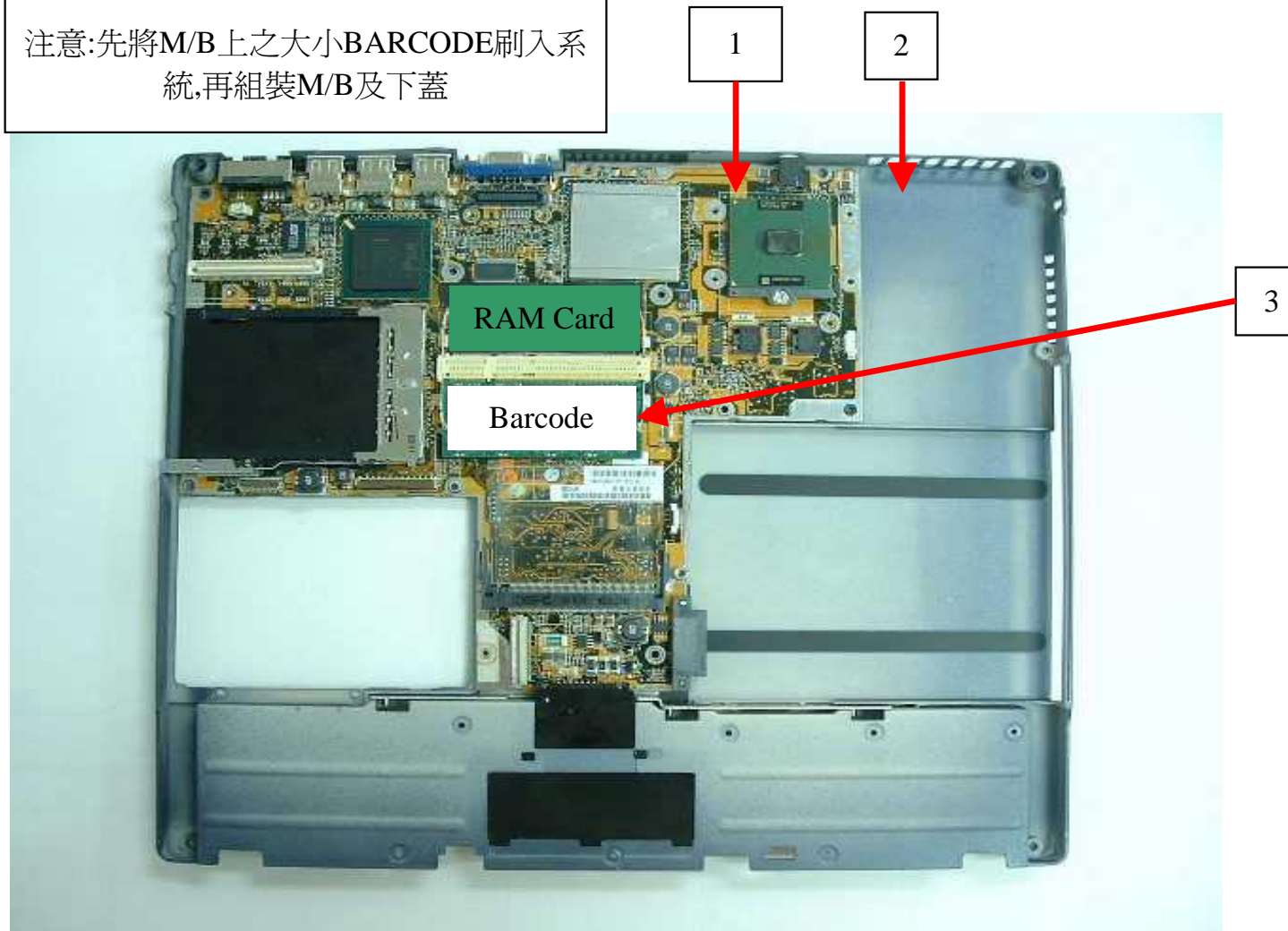
**Issue Date : 03/05/2003**

Page : 02

Dept.: IE Linko Factory I

Model Name		MB02 Series	
Station Item		M/B + Bottomcase	
MEMO	M/B + Bottomcase		
Reference Std. Time		30	sec
No	Description	P/N	Q'ty
1	M/B 半成品	已加工	1
2	BOTTOM CASE	80-50208-00	1
3	FIC BARCODE LABEL	FIC提供	1
Fixture			
Notice			
Updated Records	VER	Date	Contents
	A	01/23/2003	1st Edit
	B	03/05/2003	Add Label

注意:先將M/B上之大小BARCODE刷入系統,再組裝M/B及下蓋



**Approved: Anthony**

Initial: Wood.H

ISO Doc. No.: QF8-1N15-04 VER:1

# FIRST INTERNATIONAL COMPUTER, INC.

## WORKING INSTRUCTION

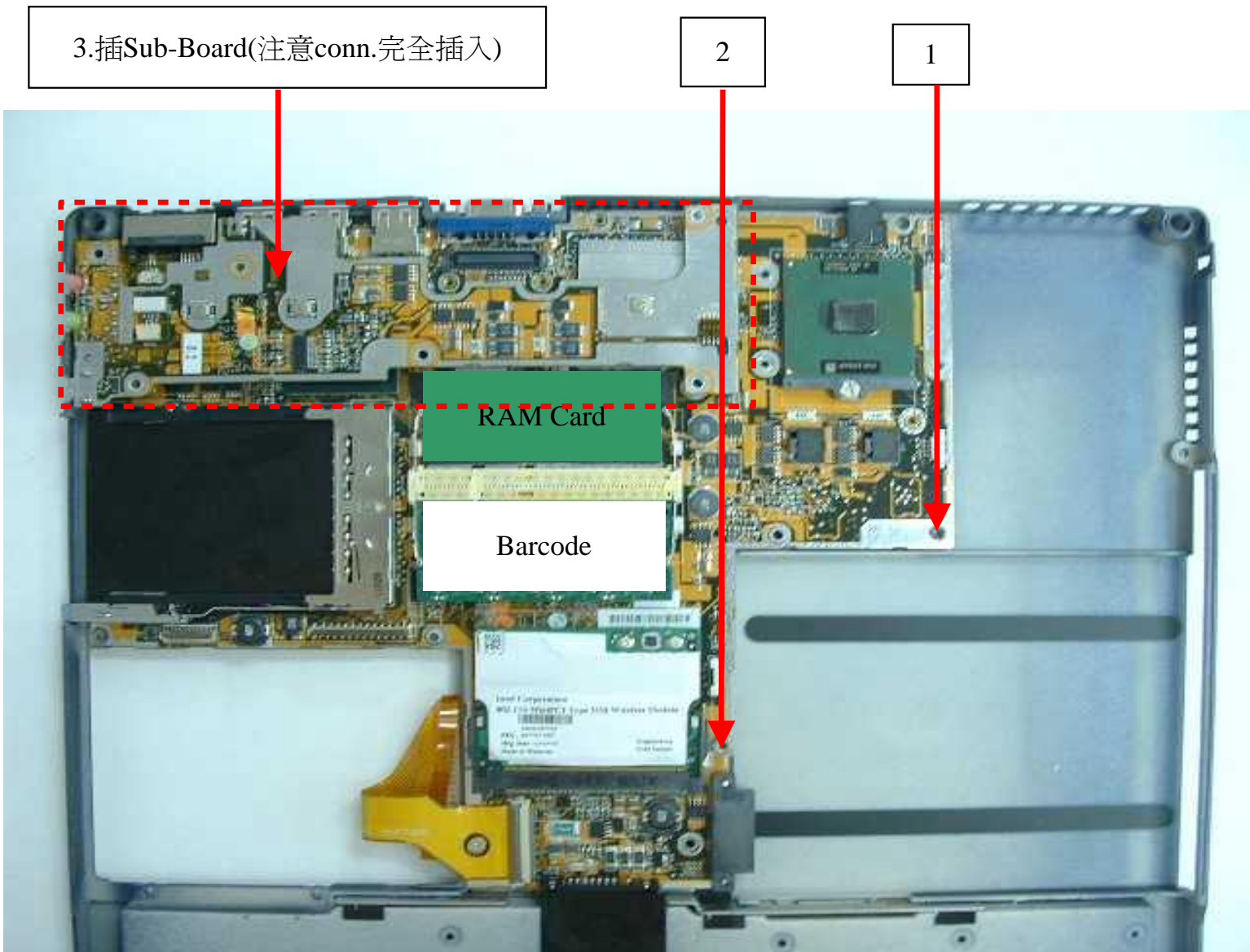
**Issue No. : QP8-1N15-01-13014**

**Issue Date : 02/06/2003**

Page : 03

**Dept.: IE Linko Factory I**

Model Name			MB02 Series	
Station Item			Fix(M/B+Bottomcase)	
MEMO	Fix(M/B+Bottomcase) & Sub-Board			
Reference Std. Time			30 sec	
No	Description	P/N	Q'ty	
1	SCREW M2.5*0.45+3I-NI(NYLOK)	24-10416-01	1	
2	HEXBOLT 3.95H	24-11004-00	1	
3	DC Board(Sub-board)	51-71497-XX	1	
	DC Board(Sub-board)(2ND)	51-71497DXX	1	
Fixture	0號電動起子			
	5mm銅柱用電動起子			
Notice	扭力:2.0~2.5KGCM			
	套筒扭力:3.0~3.5KGCM			
Updated Records	VER	Date	Contents	
	A	01/23/2003	1st Edit	
	B	02/06/2003	Update Screw's Spec.	



**Approved: Anthony**

**Initial: Wood.H**

**ISO Doc. No.: QF8-1N15-04 VER:1**

# FIRST INTERNATIONAL COMPUTER, INC.

## WORKING INSTRUCTION

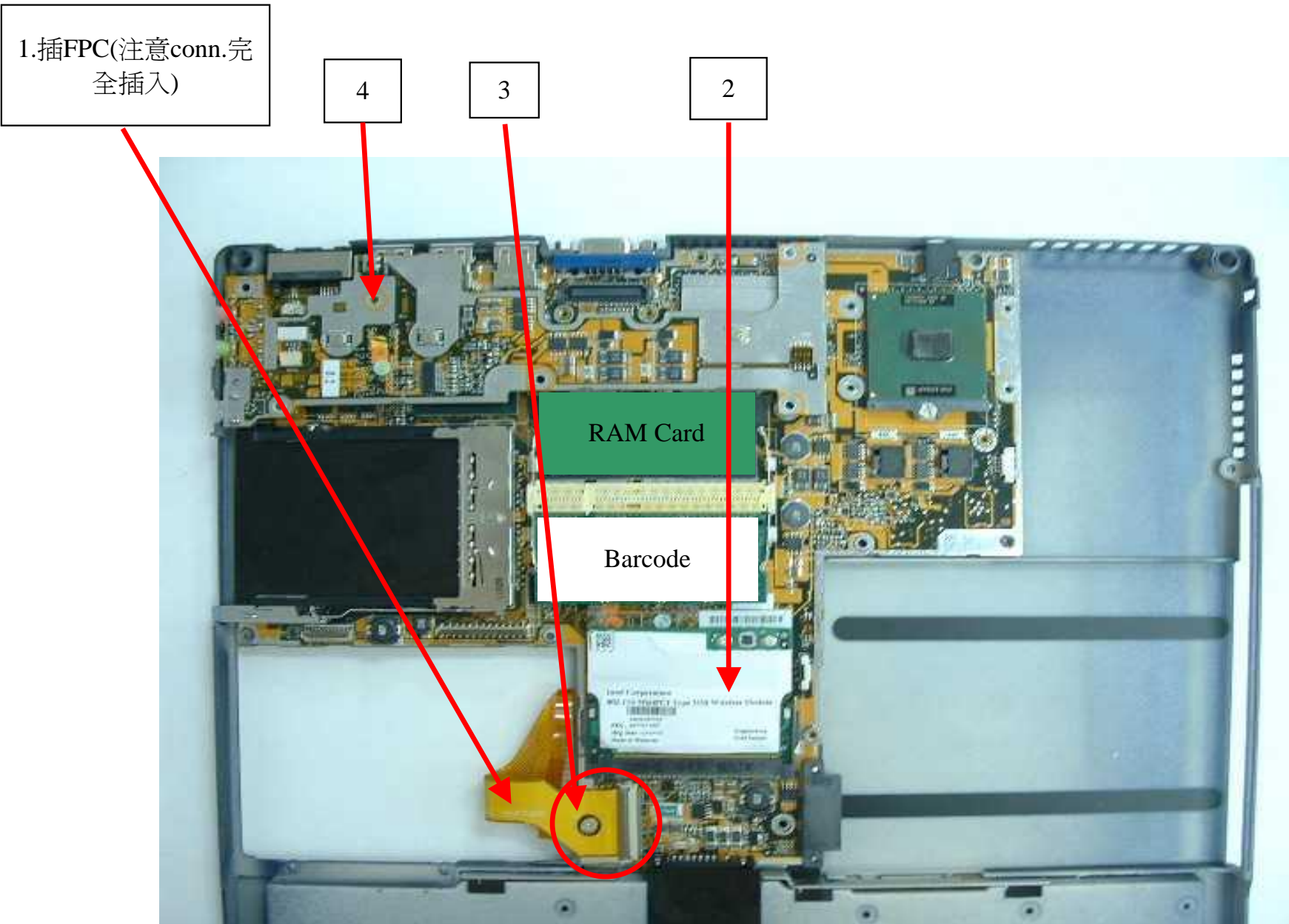
**Issue No. : QP8-1N15-01-13014**

**Issue Date : 01/23/2003**

Page : 04

**Dept.: IE Linko Factory I**

Model Name			MB02 Series	
Station Item			HDD FPC & F-Modem	
MEMO	HDD FPC & F-Modem			
Reference Std. Time			30 sec	
No	Description		P/N	Q'ty
1	HDD FPC		22-21297-00	1
2	FAX-M Bluetooth Unit		71-40224-01	1
3	SCREW M2.5*0.45+3I-NI(NYLOK)		24-10416-01	1
4	SCREW M2.5*0.45+10I-BNI(NYLOK)		24-11005-00	1
Fixture	1號電動起子			
Notice	扭力:2.0~2.5KGCM			
Updated Records	VER	Date		Contents
	A	01/23/2003		1st Edit



**Approved: Anthony**

**Initial: Wood.H**

**ISO Doc. No.: QF8-1N15-04 VER:1**



# FIRST INTERNATIONAL COMPUTER, INC.

## WORKING INSTRUCTION

**Issue No. : QP8-1N15-01-13014**

**Issue Date : 01/23/2003**

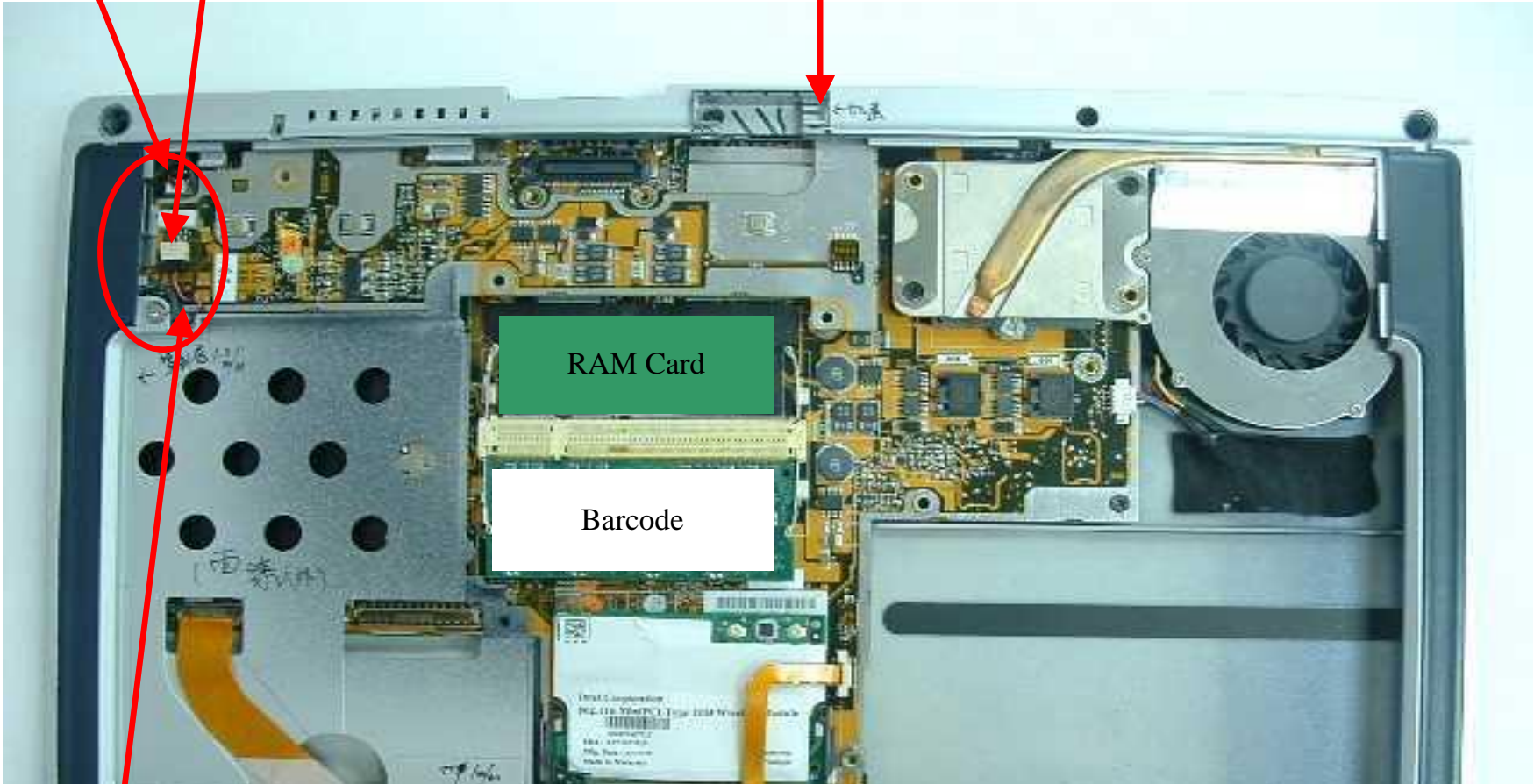
Page : 05

**Dept.: IE Linko Factory I**

[illegible]

2&3.插FPC(注意conn.  
完全插入)

### 1. 裝上蓋



## RAM Card

Barcode

## 注意理線方式



**Approved: Anthony**

Initial: Wood.H

**ISO Doc. No.: QF8-1N15-04 VER:1**



# FIRST INTERNATIONAL COMPUTER, INC.

## WORKING INSTRUCTION

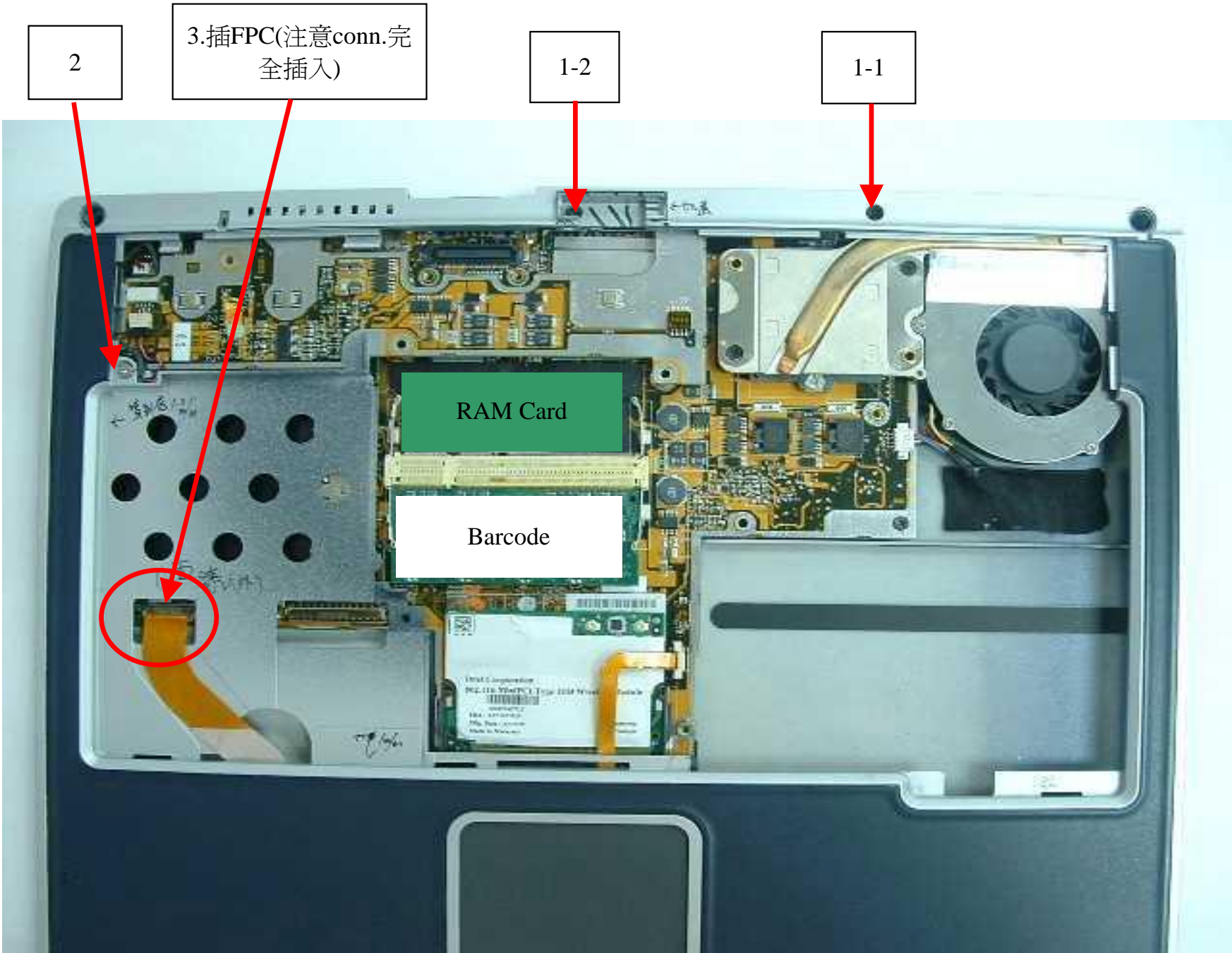
**Issue No. : QP8-1N15-01-13014**

**Issue Date : 03/05/2003**

**Page : 06**

**Dept.: IE Linko Factory I**

Model Name			MB02 Series	
Station Item			TOP COVER(2)	
MEMO	Ass'y Top cover& Base unit(2)			
Reference Std. Time			30 sec	
No	Description		P/N	Q'ty
1	SCREW M2.5*0.45+5I-BNI(NYLOK)		24-10324-01	2
2	SCREW M2.5*0.45+12I-NI(NYLOK)		24-10327-00	1
3	插FPC動作		NON	1
Fixture	1號電動起子			
Notice	扭力:2.5~3.0KGCM			
Updated Records	VER	Date	Contents	
	A	01/23/2003	1st Edit	
	B	03/05/2003	Update Screw	



**Approved: Anthony**

**Initial: Wood.H**

**ISO Doc. No.: QF8-1N15-04 VER:1**

# FIRST INTERNATIONAL COMPUTER, INC.

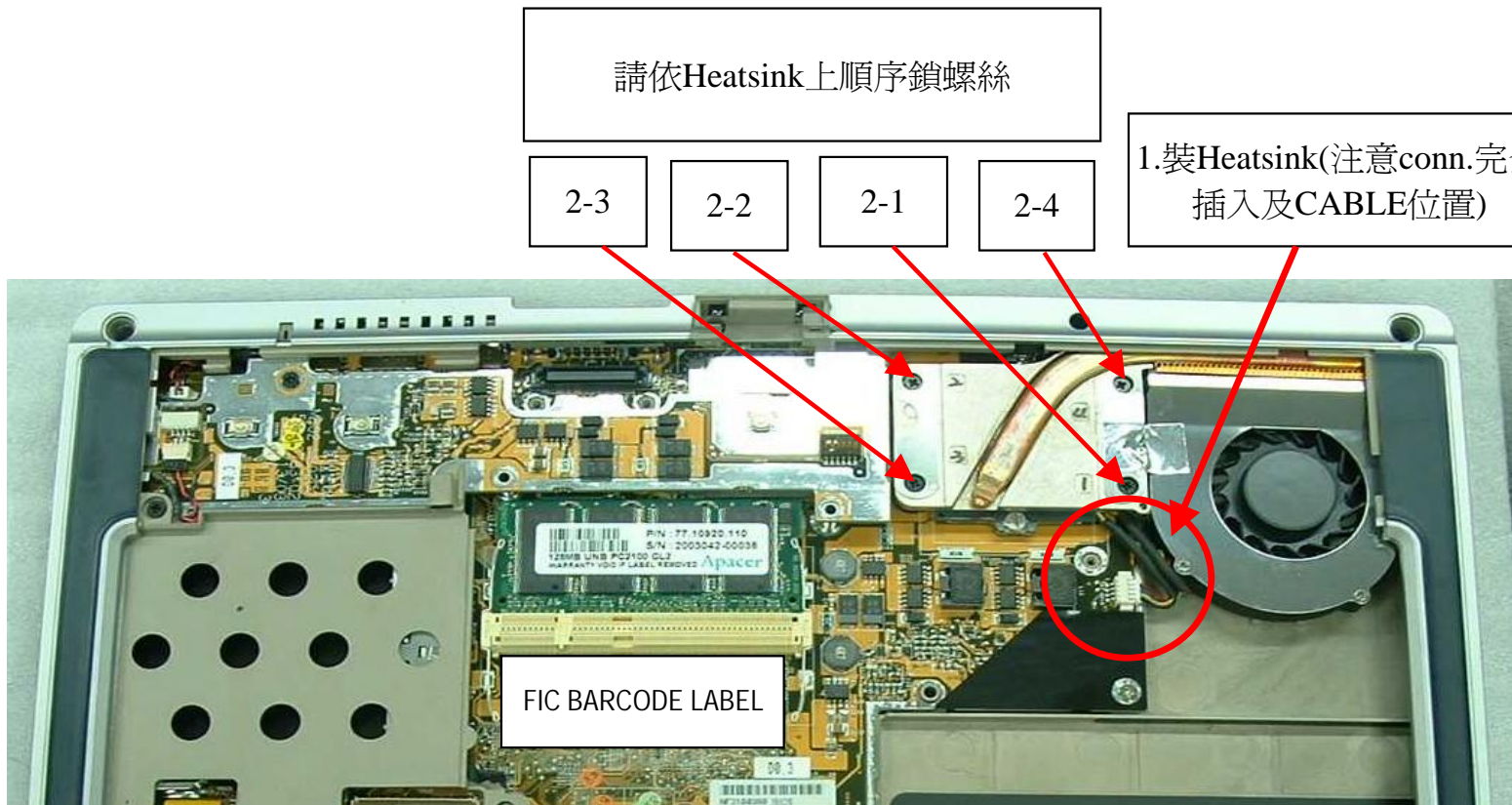
## WORKING INSTRUCTION

**Issue No. : QP8-1N15-01-13014**

**Issue Date : 02/06/2003**

**Page : 07**

**Dept.: IE Linko Factory I**

[illegible]

**Approved: Anthony**

**Initial: Wood.H**

**ISO Doc. No.: QF8-1N15-04 VER:1**



# FIRST INTERNATIONAL COMPUTER, INC.

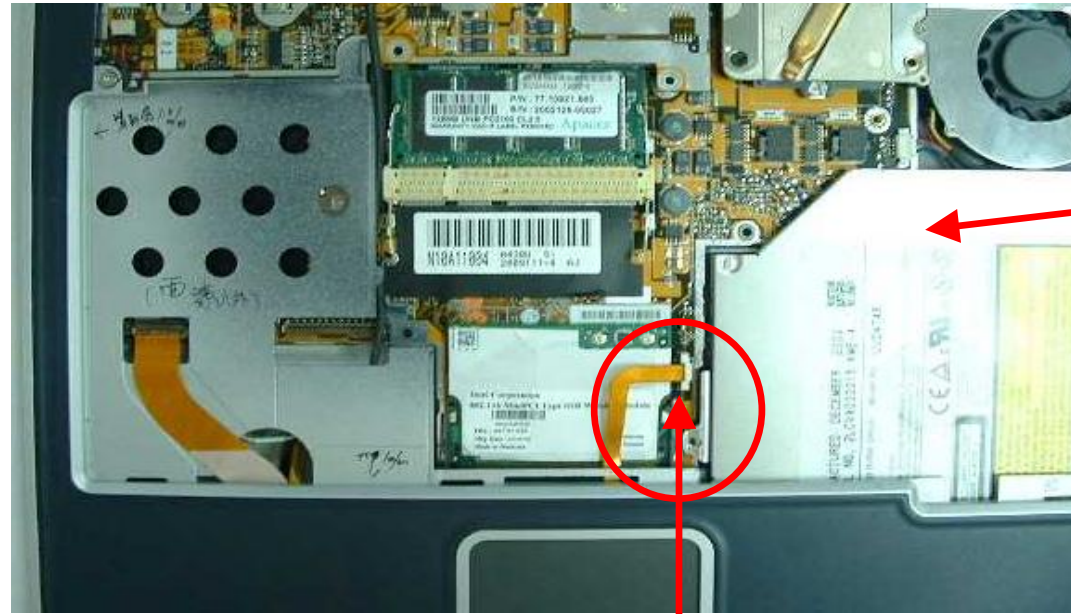
## WORKING INSTRUCTION

**Issue No. : QP8-1N15-01-13014**

**Issue Date : 02/06/2003**

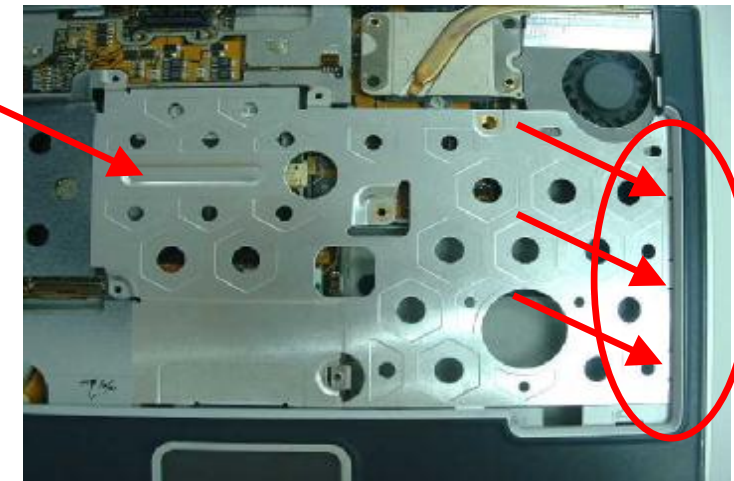
Page : 08

**Dept.: IE Linko Factory I**

[illegible]

## 1.插入CDR

## 2.插FPC(注意conn.完全插入)



3.放Heat Plate注意箭頭所指必須將卡勾掛上

**Approved: Anthony**

Initial: Wood.H

**ISO Doc. No.: QF8-1N15-04 VER:1**

# FIRST INTERNATIONAL COMPUTER, INC.

## WORKING INSTRUCTION

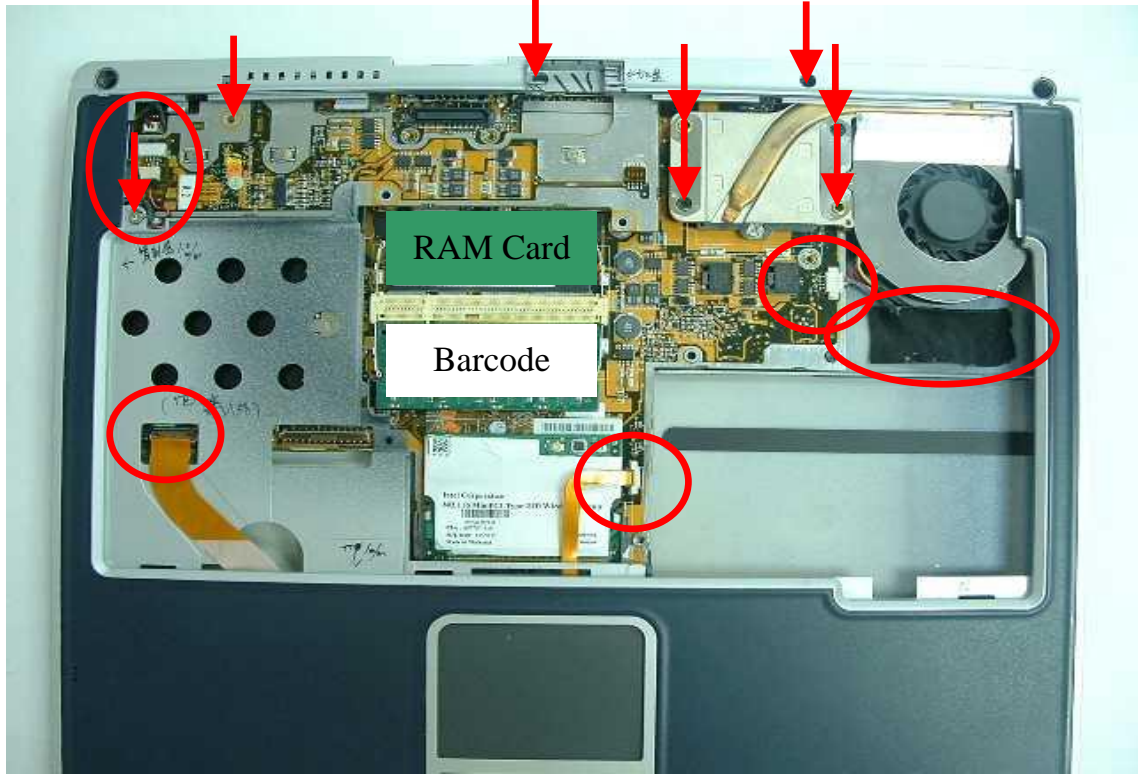
**Issue No. : QP8-1N15-01-13014**

**Issue Date : 01/23/2003**

Page : 09

**Dept.: IE Linko Factory I**

Model Name		MB02 Series	
Station Item		IPQC 1	
MEMO	IPQC 1		
Reference Std. Time		30	sec
No	Description	P/N	Q'ty
	CHECKING POINT		
1	各部位有無裂痕及刮痕		
2	螺絲有無脫鬆		
3	各部位有無不合理的空細		
4	是否有沒組裝的地方		
Fixture			
Notice			
Updated Records	VER	Date	Contents
	A	01/23/2003	第一次發行



## How's the Cable or FPC Connect?(檢查cable或排線有無插入?)

How's PCMCIA Door and the  
ejection buttom? (檢查推桿是否正  
常?)

Are Hex Bolts correctly installed?  
Are Screws correctly installed?  
Is Frmae conectly installed?  
(檢查螺絲銅柱是否鎖正或缺漏件?)

The Case are not scraping?(檢查有無刮傷?)



**Approved: Anthony**

**Initial: Benjamin**

**ISO Doc. No.: QF8-1N15-04 VER:1**



# FIRST INTERNATIONAL COMPUTER, INC.

## WORKING INSTRUCTION

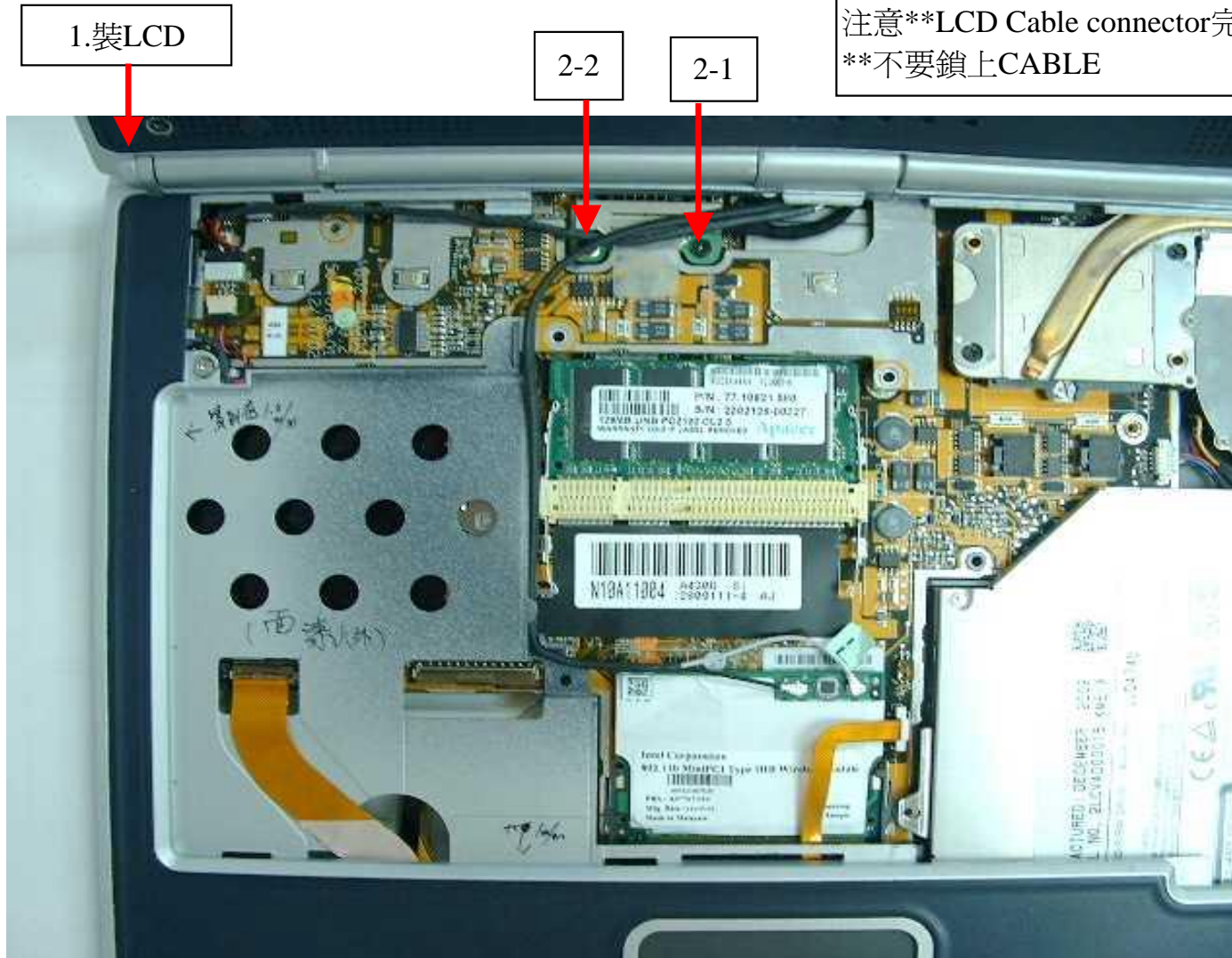
**Issue No. : QP8-1N15-01-13014**

**Issue Date : 01/23/2003**

Page : 10

**Dept.: IE Linko Factory I**

<b>Model Name</b>		MB02 Series	
<b>Station Item</b>		LCD+Base Unit	
<b>MEMO</b>	LCD & Base Unit Ass'y		
<b>Reference Std. Time</b>		30	sec
No	Description	P/N	Q'ty
1	LCD MODULE	已加工	1
2	SCREW M2.5*0.45+10I-BNI(NY)	24-11005-00	2
<b>Fixture</b>	1號電動起子		
<b>Notice</b>	扭力:2.5~3.0KGCM		
<b>Updated Records</b>	VER	Date	Contents
	A	01/23/2003	第一次發行



**Approved: Anthony**

**Initial: Benjamin**

**ISO Doc. No.: QF8-1N15-04 VER:1**

# FIRST INTERNATIONAL COMPUTER, INC.

## WORKING INSTRUCTION

**Issue No. : QP8-1N15-01-13014**

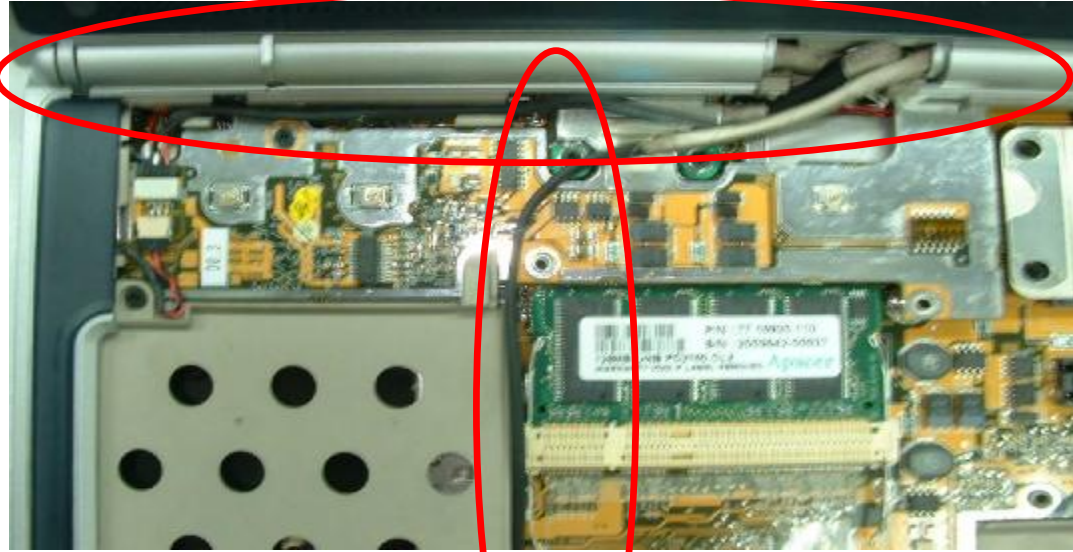
**Issue Date : 02/06/2003**

**Page : 11**

**Dept.: IE Linko Factory I**

[illegible]

## 1.裝LCD後的理線動作



2.若無FAX-M/LAN-Board加貼一張Tape  
固定Cableb,如圖,接點之凹槽向上



**Approved: Anthony**

**Initial: Benjamin**

**ISO Doc. No.: QF8-1N15-04 VER:1**



# FIRST INTERNATIONAL COMPUTER, INC.

## WORKING INSTRUCTION

**Issue No. : QP8-1N15-01-13014**

**Issue Date : 02/06/2003**

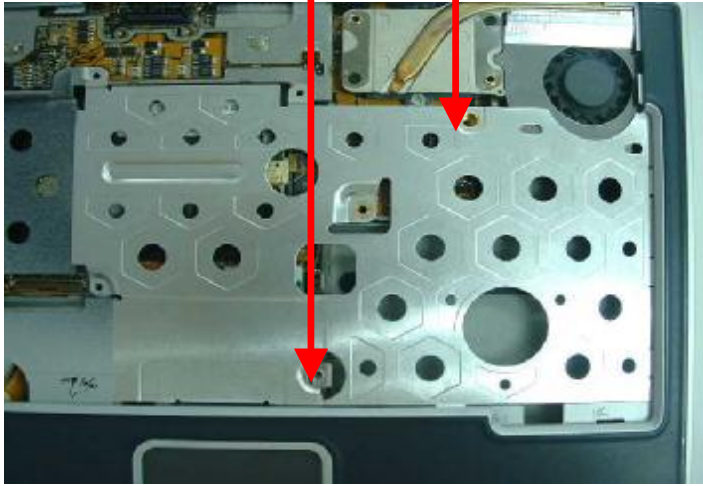
Page : 12

**Dept.: IE Linko Factory I**

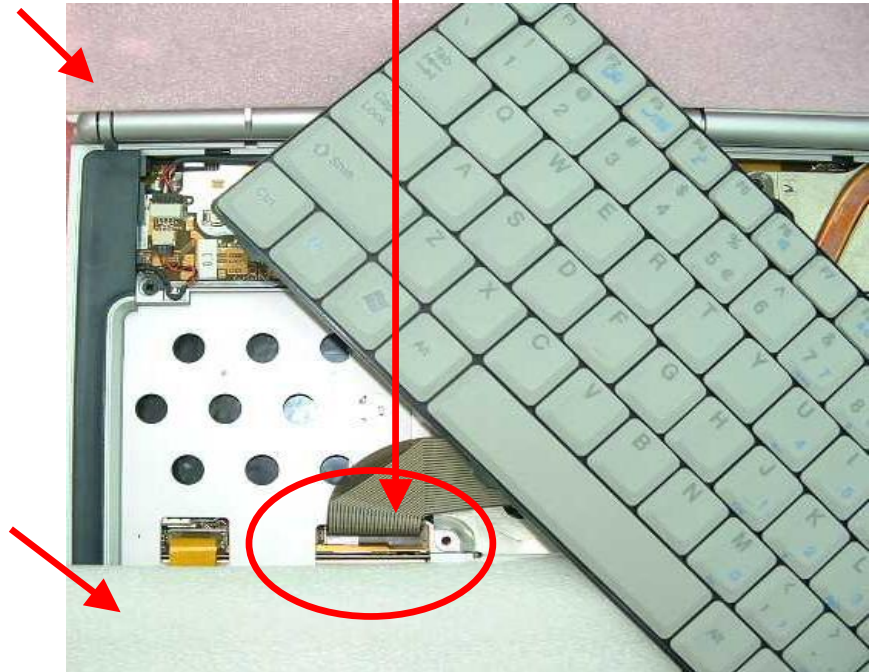
Model Name			MB02 Series		
Station Item			Install K/B		
MEMO	Install K/B				
Reference Std. Time			30		sec
No	Description		P/N	Q'ty	
1	SCREW M2.5*0.45+4I-NI(NYLOK)		24-10720-00	2	
2	K/B (US)(K020830A)		71-31691-00	1	
	K/B (UK)		71-31691-01	1	
	K/B (JA)		71-31691-02	1	
	K/B (GR)		71-31691-03	1	
3	PAPER TAPE(3 CM)		FIC提供	2	
Fixture	0號電動起子				
Notice	扭力:2.0~2.5KGCM				
Updated Records	VER	Date	Contents		
	A	01/23/2003	第一次發行		
	B	02/06/2003	Change Picture		

1-2.注:有CDR才鎖

1-1



2.裝K/B如圖將K/B轉約30~45度再將FPC插入,在LCD及上蓋上方加墊泡棉避免刮傷



### 3-1.貼TAPE固定K/B

### 3-2.貼TAPE固定K/B



**Approved: Anthony**

**Initial: Wood.H**

**ISO Doc. No.: QF8-1N15-04 VER:1**

# FIRST INTERNATIONAL COMPUTER, INC.

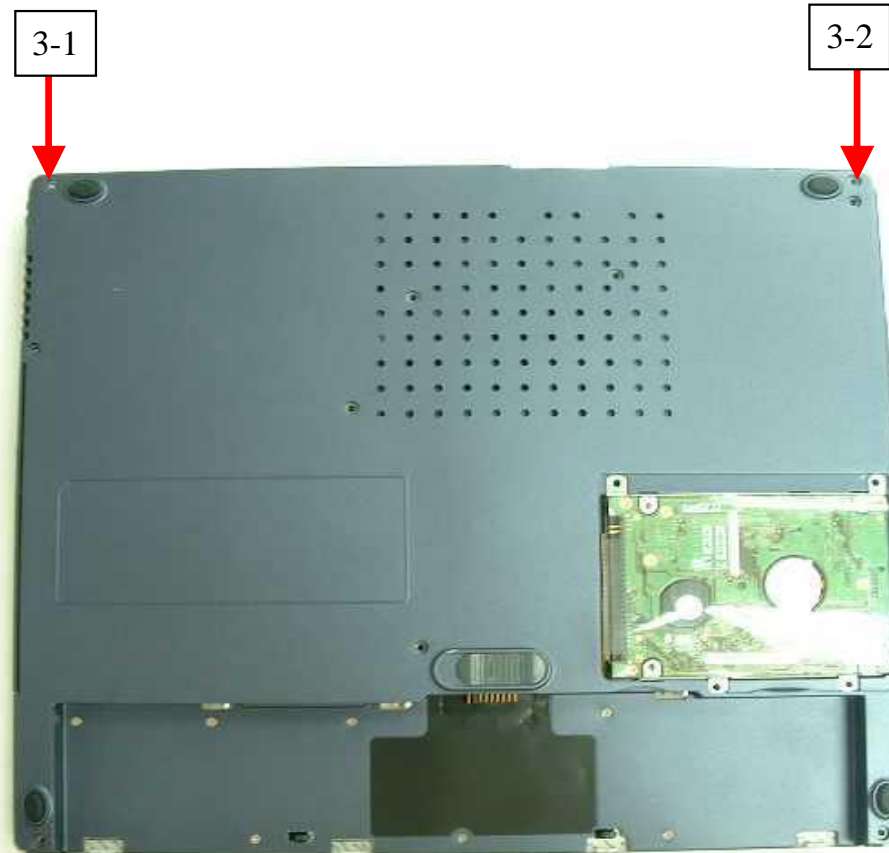
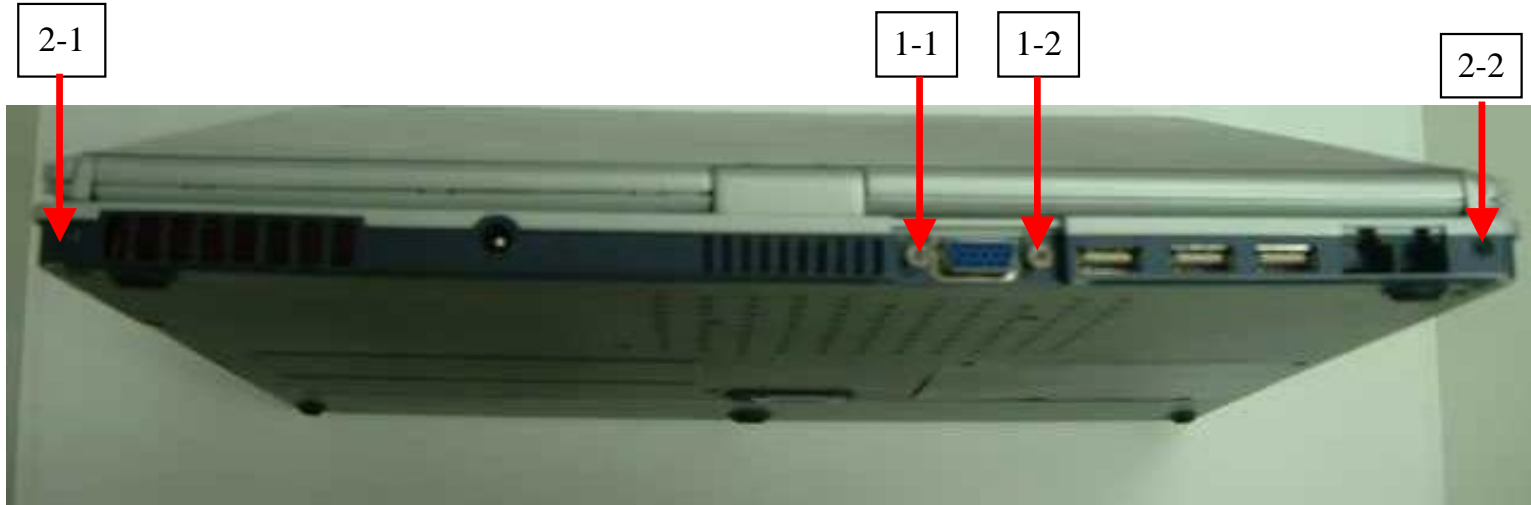
## WORKING INSTRUCTION

**Issue No. : QP8-1N15-01-13014**

**Issue Date : 01/23/2003**

Page : 13

**Dept.: IE Linko Factory I**

[illegible]

**Approved: Anthony**

**Initial: Wood.H**

**ISO Doc. No.: QF8-1N15-04 VER:1**



# FIRST INTERNATIONAL COMPUTER, INC.

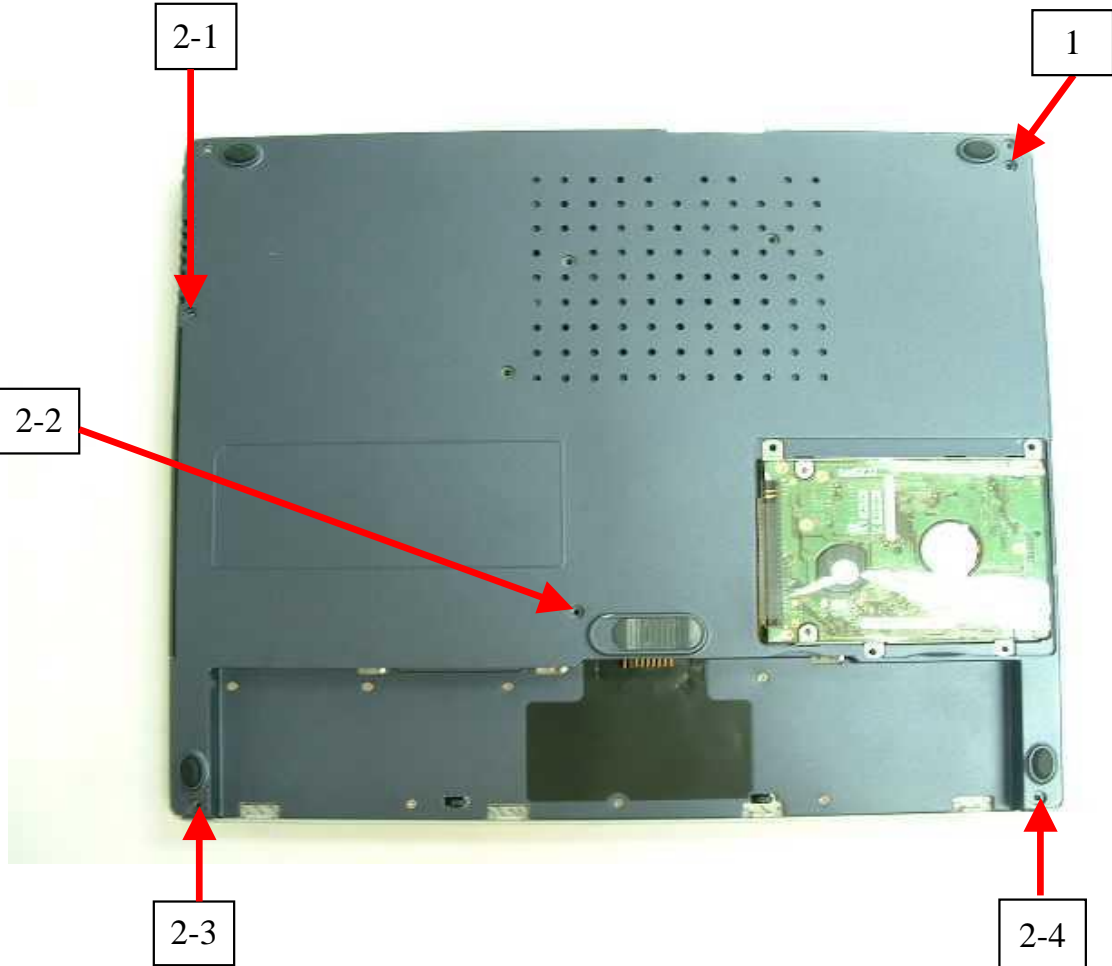
## WORKING INSTRUCTION

**Issue No. : QP8-1N15-01-13014**

**Issue Date : 01/23/2003**

Page : 14

**Dept.: IE Linko Factory I**

[illegible]

**Approved: Anthony**

**Initial: Wood.H**

**ISO Doc. No.: QF8-1N15-04 VER:1**

# FIRST INTERNATIONAL COMPUTER, INC.

## WORKING INSTRUCTION

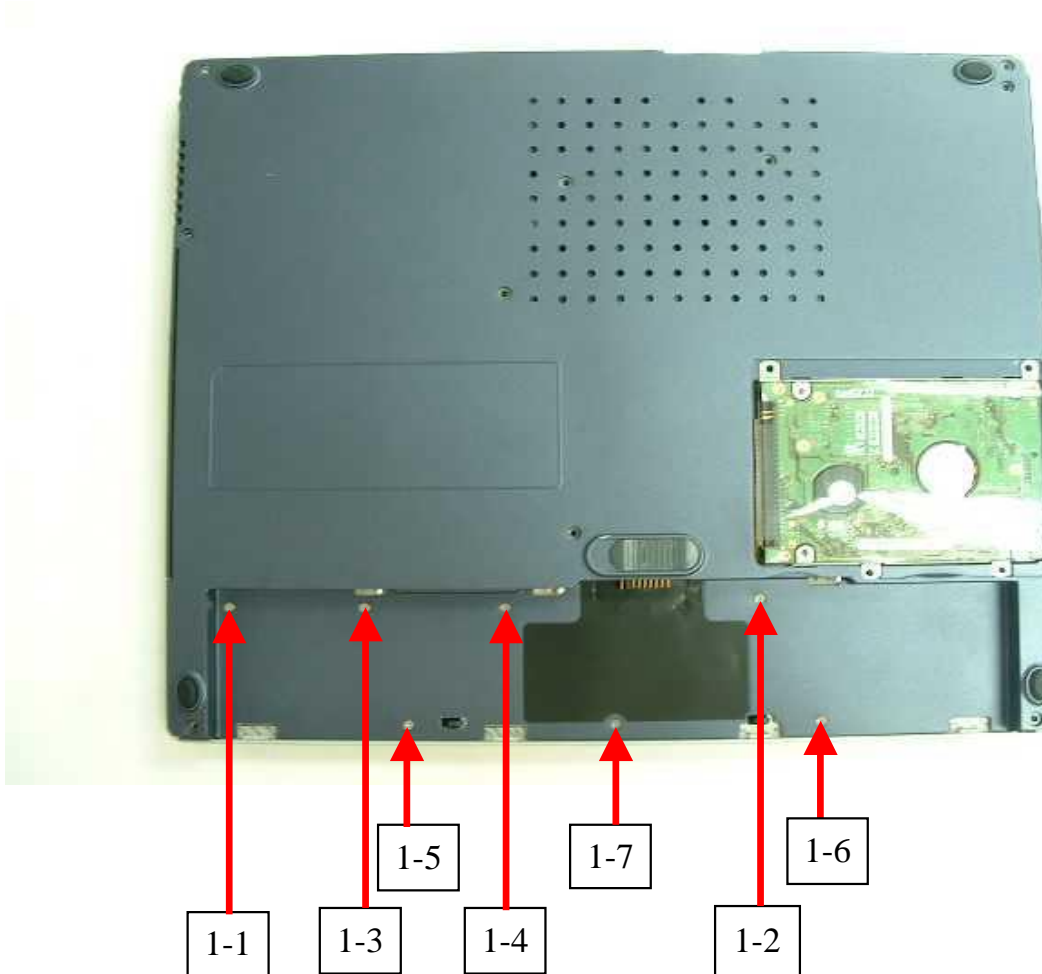
**Issue No. : QP8-1N15-01-13014**

**Issue Date : 01/23/2003**

Page : 15

**Dept.: IE Linko Factory I**

Model Name			MB02 Series	
Station Item			Fix Back Side(2)	
MEMO	Fix Back Side(2)			
Reference Std. Time			30 sec	
No	Description	P/N	Q'ty	
1	SCREW M2*0.4+2.5I-NI(NYLOK)	24-10370-01	7	
Fixture	0號電動起子			
Notice	扭力:2.0~2.5KGCM			
Updated Records	VER	Date	Contents	
	A	01/23/2003	第一次發行	



**Approved: Anthony**

**Initial: Wood.H**

**ISO Doc. No.: QF8-1N15-04 VER:1**

# FIRST INTERNATIONAL COMPUTER, INC.

## WORKING INSTRUCTION

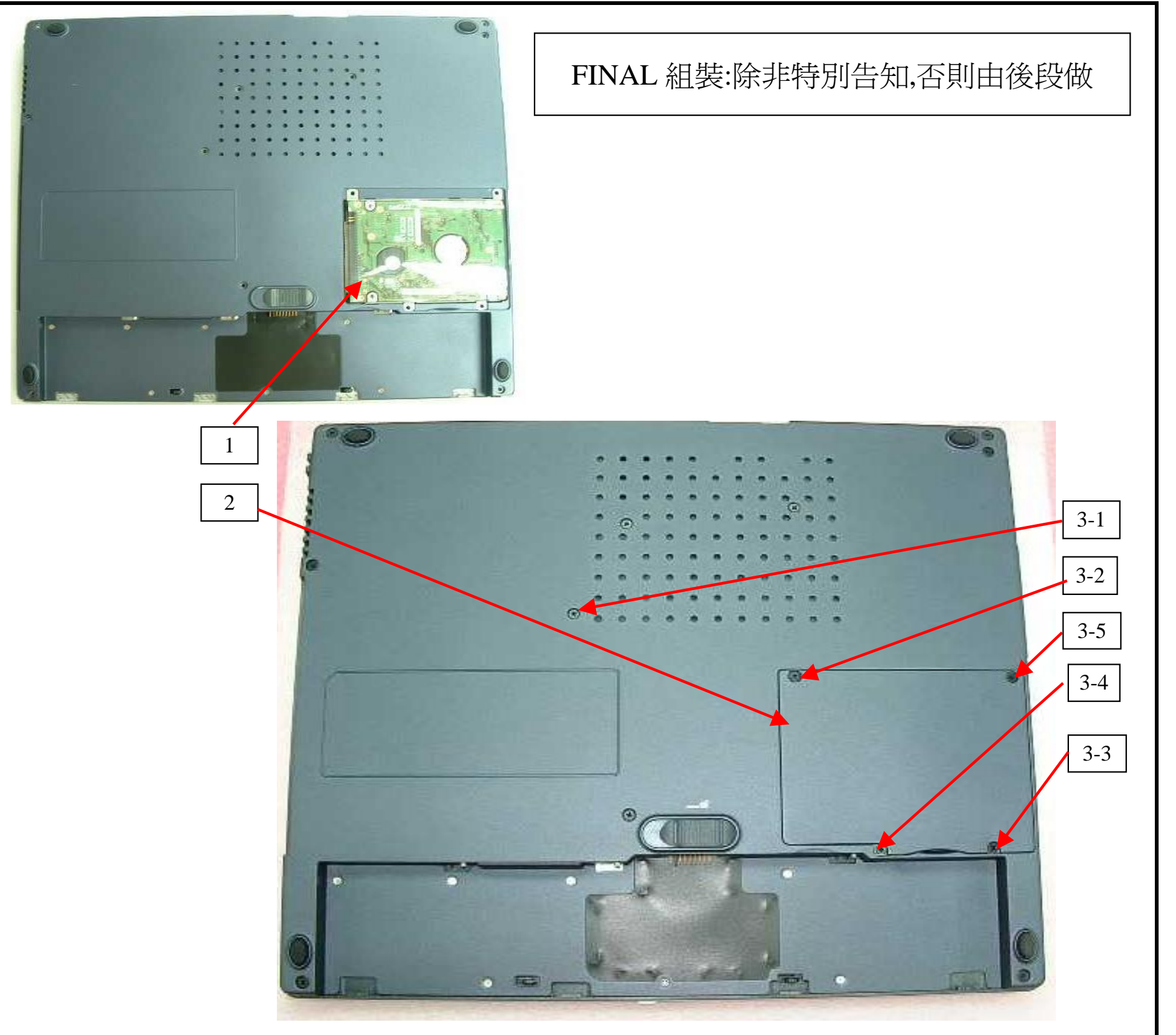
**Issue No. : QP8-1N15-01-13014**

**Issue Date : 02/06/2003**

Page : 16

**Dept.: IE Linko Factory I**

Model Name			MB02 Series	
Station Item			Install HDD	
MEMO	Install HDD			
Reference Std. Time			30 sec	
No	Description		P/N	Q'ty
1	HDD MODULE		已加工	1
2	HDD COVER		24-52177-00	1
3	SCREW M2.5*0.45+10I-BNI(NYLOK)		24-11005-00	5
Fixture	1號電動起子			
Notice	扭力:2.5~3.0KGCM			
Updated Records	VER	Date	Contents	
	A	01/23/2003	第一次發行	
	B	02/06/2003	Update Items	



**Approved: Anthony**

**Initial: Wood.H**

**ISO Doc. No.: QF8-1N15-04 VER:1**

# FIRST INTERNATIONAL COMPUTER, INC.

## WORKING INSTRUCTION

**Issue No. : QP8-1N15-01-13014**

**Issue Date : 01/23/2003**

**Page : 17**

**Dept.: IE Linko Factory I**

<b>Model Name</b>		MB02 Series	
<b>Station Item</b>		Inspection	
<b>MEMO</b>	IPQC 2		
<b>Reference Std. Time</b>		30	sec
<b>No</b>	<b>Description</b>	<b>P/N</b>	<b>Q'ty</b>
	CHECKING POINT		
1	各部位有無裂痕及刮痕		
2	是否有沒組裝的地方		
3	螺絲有無脫鬆		
4	各部位有無不合理的空細		
6	各按鈕/鍵/接頭有無異樣		
<b>Fixture</b>			
<b>Notice</b>	1.Check switch:According to EE Jumper setting Notice		
	2.Check gap:According to ME Gap Spec Notice		
	3.Check M/B Ver.:According to EE M/B Reversion Table		
<b>Updated Records</b>	<b>VER</b>	<b>Date</b>	<b>Contents</b>
	A	01/23/2003	第一次發行



## Are G/P Buttom feeling good?



How's PCMCIA Door and the  
ejection buttom? (檢查推桿是否正常?)

The Case are not scraping?(檢查有無刮傷?)

Are all the connecting areas ok?

Are Hex Bolts correctly installed?  
Are Screws correctly installed?  
Is Frmae conectly installed?  
(檢查螺絲銅柱是否鎖正或缺漏件?)

**Approved: Anthony**

**Initial: Benjamin**

**ISO Doc. No.: QF8-1N15-04 VER:1**